



---

# Annual Performance Report

---

# 2014

---

The Annual Performance Report of the Jan Evangelista Purkyně University in Ústí nad Labem for 2014, generated pursuant to Section 21(2,3) of the Act No. 111/1998 Coll. on Universities and on amendment and supplementation of other laws (the Universities Act):

- a) was discussed by the University Management Board pursuant to Section 15(2)(c) of the Act on 19 June 2015,
- b) was discussed and approved by the University Senate pursuant to Section 9(1)(d) of the Act on 24 June 2015.

doc. RNDr. Martin Balej, Ph.D., in his own hand  
Rector

## TABLE OF CONTENT

- 1. INTRODUCTION**
- 2. BASIC DETAILS OF THE UNIVERSITY**
  - 2.a Name of the university, registered seat
  - 2.b Organizational chart
  - 2.c University bodies
    - 2.c.a Management Board
    - 2.c.b Scientific Board
    - 2.c.c Academic Senate
  - 2.d Participation in representation of the universities
  - 2.e Mission, visions, strategic objectives
  - 2.f Changes in area of internal regulations
- 3. STUDY PROGRAMMES, ORGANIZATION OF THE STUDY AND EDUCATION**
  - 3.a Accredited study programmes
  - 3.b Accredited study programmes carried out in foreign languages
  - 3.c Study programmes, i.e. joint/double/multiple degree
  - 3.d Accredited study programmes carried out in cooperation with other Czech university
  - 3.e Accredited study programmes carried out in cooperation with a higher vocational school
  - 3.f Accredited study programmes carried out outside the principal place
  - 3.g Accredited study programmes in compliance with the National Reference Framework of Tertiary Education
  - 3.h Study credit system
  - 3.i Other educational activities
- 4. STUDENTS**
  - 4.a Students in accredited study programmes
    - 4.a.a Foreign students in accredited study programmes
  - 4.b Students - self-payers
  - 4.c Students over 30 years of age
  - 4.d Unsuccessful students
  - 4.e Measures to reduce failure of the study
- 5. GRADUATES**
  - 5.a Graduates of accredited study programmes
  - 5.b Contact and cooperation with graduates
  - 5.c Employment and employability of graduates
  - 5.d Cooperation with future employers
- 6. INTEREST IN THE STUDY**
  - 6.a Interest in the study
  - 6.b Entrance examination
  - 6.c Students of extension master's and doctoral degree study - graduates of other universities
  - 6.d Cooperation with secondary schools
- 7. ACADEMIC PERSONNEL**
  - 7.a Employee numbers
  - 7.b Qualification and age structure of the academic and research personnel
  - 7.c Number of academic and research personnel by working time
  - 7.d Number of academic personnel - foreign nationals
  - 7.e Associate professors and professors appointed in 2014
  - 7.f Further education courses
  - 7.g Career system, motivation instruments for employee remuneration

- 7.g.a Motivation instruments
- 7.g.b Rector's awards for employees
- 8. SOCIAL MATTERS OF STUDENTS AND EMPLOYEES**
- 8.a Scholarships
- 8.b Scholarship programmes
- 8.c Consultancy services
- 8.d Students with specific needs
- 8.e Extremely talented students
- 8.f Accommodation and catering services
- 8.g Employee care
- 9. INFRASTRUCTURE**
- 9.a Library funds
- 9.b Information and communication services, information infrastructure availability
- 10. LIFELONG EDUCATION**
- 10.a Lifelong education courses
- 10.b Participants of lifelong education courses
- 10.c Third Age University
- 11. RESEARCH, DEVELOPMENT, ARTISTIC AND OTHER CREATIVE ACTIVITIES**
- 11.a Fulfilment of the Long-Term Prospect of the Ministry of Education, Youth and Sports, the Long-Term Prospect of the University and their updates
- 11.b Interconnection of creative and educational activities
- 11.c Students' involvement in the creative activity
- 11.d Specific financial funds for research, development and innovations
- 11.e Scientific conferences
- 11.f Support of the doctoral degree study programmes and employees at the post-doctoral positions
- 11.g Share of application sphere in creation and implementation of study programmes
- 11.h Cooperation with the application sphere on creation and transfer of innovations
- 11.i Contracts with the application sphere entities involved in education in the accredited study programmes
- 11.j Experts from the application sphere involved in education in the accredited study programmes
- 11.k Disciplines with practical application
- 11.l Income from sale of licenses
- 11.m Income from contractual jobs
- 11.n Income from paid courses held for employees of the application sphere entities
- 11.o Income from specialized consultancy and advisory activities or specialized activities provided to the application sphere entities
- 11.p Number spin-offs/start-ups
- 11.q Commercialisation strategy
- 11.r Engagement in the region
- 12. INTERNATIONALISATION**
- 12.a Strategy for development of international relationships and international environment
- 12.b Participation in international educational programmes including mobilities
- 12.b.a Erasmus
- 12.b.b Comenius
- 12.b.c Tempus
- 12.b.d Ceepus
- 12.b.e Aktion
- 12.b.f Institutional development plan

- 12.b.g Other programmes
- 12.c Participation in international research and development programmes including mobilities
- 12.d Mobility of students and academic personnel by country
- 12.e Fulfilment of major internationalisation plans in 2012
- 13. QUALITY ASSURANCE AND EVALUATION OF ACTIVITIES PERFORMED**
- 13.a Internal quality assessment
- 13.b External quality assessment
- 13.c Financial control
- 14. NATIONAL AND INTERNATIONAL EXCELLENCE**
- 14.a Membership in international associations, organisations and unions
- 14.b Membership in professional associations, organisations and unions
- 14.c National and international awards in 2014
- 14.d Evaluation by a team of international experts
- 15. DEVELOPMENT**
- 15.a Engagement in Centralized Development Projects of the Ministry of Education, Youth and Sports
- 15.b Institutional development plan
- 15.c Participation in EU operational programmes
- 15.c.a Participation in OP Objective 3
- 15.d Participation in the Education Policy Fund
- 16. CONCLUSION**

## 1. INTRODUCTION

The Annual Performance Report of the Jan Evangelista Purkyně University in Ústí nad Labem for 2014 is submitted pursuant to Act No. 111/1998 Coll. on universities.

It presents the details of the activities related to the performance of the University in Czech tertiary education to the general public. The individual chapters of the annual report present the quantitative and qualitative aspects of the University development in 2014.

The Jan Evangelista Purkyně University in Ústí nad Labem (the “University”) had the following sections implementing the study programmes or research and development activities in 2014:

- Faculty of Social and Economic Studies
- Faculty of Arts and Design
- Faculty of Production Technologies and Management
- Faculty of Health Studies
- Faculty of Environment
- Faculty of Philosophy
- Faculty of Education
- Faculty of Science
- Research Centre for Competitive and Sustainable Regional Development (VYCERRO)

## 2. BASIC DETAILS OF THE UNIVERSITY

### 2.a NAME OF THE UNIVERSITY, REGISTERED SEAT

Full name: **Jan Evangelista Purkyně University in Ústí nad Labem (the “University”)**  
Address: Pasteurova 3544/1, 400 96 Ústí nad Labem

*University management:*

Rector	prof. RNDr. René Wokoun, CSc.
Vice-Rector for Development and Informatisation	doc. ak. mal. (artist) Vladimír Švec
Vice-Rector for Study	RNDr. Alena Chvátalová, Ph.D.
Vice-Rector for Science	prof. Ing. Jiřina Jílková, CSc.
Vice-Rector for External Relations	doc. PhDr. Zdeněk Radvanovský, CSc.
Bursar	Ing. Vít Šumpela

#### **Faculty of Social and Economic Studies**

Moskevská 54, 400 96 Ústí nad Labem

*Faculty management:*

Dean	RNDr. Jaroslav Koutský, Ph.D.
Vice-Dean for Study	Ing. Kateřina Felixová, Ph.D.
Vice-Dean for Science	doc. Ing. Daniel Šťastný, Ph.D.
Vice-Dean for Development and Informatisation	Mgr. Ondřej Moc, Ph.D.
Vice-Rector for External Relations	doc. PhDr. Pavel Kuchař, CSc.
Secretary	Ing. Dagmar Kubišová

#### **Faculty of Arts and Design**

Pasteurova 9, 400 96 Ústí nad Labem

*Faculty management:*

Dean	doc. Mgr. Michal Koleček, Ph.D.
Vice-Dean for Study	doc. Mgr. Michaela Thelenová
Vice-Dean for Development and Informatisation	doc. Mgr.A. Pavel Mrkus
Vice-Dean for Foreign Countries and Science	PhDr. Jaroslav Polanecký, Ph.D.
Secretary	Mgr. Miroslav Matoušek

#### **Faculty of Production Technologies and Management**

Na Okraji 1001/7, 400 96 Ústí nad Labem

Consultation Centre of the Faculty: Střední průmyslová škola a Vyšší odborná škola Chomutov,  
Školní 50, 430 01 Chomutov

*Faculty management:*

Dean	prof. Ing. František Holešovský, Dr.
Vice-Dean for Study	PhDr. Jaroslav Zukerstein, Ph.D.
Vice-Dean for Development and Informatisation	Ing. Blanka Skočilasová, Ph.D.
Vice-Dean for Science	Ing. Milan Dian, Ph.D.
Vice-Dean for External Relations	doc. Ing. Nataša Náprstková, Ph.D.
Secretary	Mgr. Jan Černý

#### **Faculty of Health Studies**

Velká Hradební 13, 400 96 Ústí nad Labem

*Faculty management:*

Dean	doc. MUDr. Miroslav Tichý, CSc.
Vice-Dean for Study	doc. PhDr. Zdeněk Havel, CSc. (until 30 April 2014)
	PhDr. Mgr. Kateřina Vaníková, Ph.D. (from 1 May 2014)
Vice-Dean for Science and Foreign Relations	PhDr. Hana Kynštová, Ph.D.
Secretary and Vice-Dean for Development	Ing. Miloš Němeček

**Faculty of Environment**

Králova výšina 7, 400 96 Ústí nad Labem

Department of the Faculty in Most: Dělnická 21, 434 01 Most

*Faculty management:*

Dean  
Vice-Dean for Study  
Vice-Dean for Development and Informatisation  
Vice-Dean for Science  
Vice-Rector for External Relations  
Secretary

Ing. Miroslav Richter, Ph.D., EUR ING  
Mgr. Petr Bogan  
Ing. Jan Popelka, Ph.D.  
doc. Ing. Pavel Janoš, CSc.  
Ing. Martin Neruda, Ph.D.  
Mgr. Jan Vojtíšek

**Faculty of Philosophy**

České mládeže 8, 400 96 Ústí nad Labem

*Faculty management:*

Dean  
Vice-Dean for Study  
Vice-Dean for Development and Informatisation  
Vice-Dean for Science and Foreign Relations  
Secretary

doc. Ing. Aleš Havlíček, Ph.D.  
doc. Mgr. Hana Bergerová, Dr.  
doc. PhDr. Michaela Hrubá, Ph.D.  
Mgr. David Tomíček, Ph.D.  
Ing. Terezie Tahalová

**Faculty of Education**

České mládeže 8, 400 96 Ústí nad Labem

*Faculty management:*

Dean  
Vice-Dean for Study  
Vice-Dean for Development and Relations of the Faculty  
Vice-Dean for Sciences and Creative Activities  
Secretary  
Ing. Lenka Hřebejková (from 1 December 2014)

doc. PaedDr. Pavel Doulík, Ph.D.  
doc. PhDr. Jiří Škoda, Ph.D.  
Mgr. Zuzana Procházková, Ph.D.  
doc. PaedDr. Ivana Brtnová Čepičková, Ph.D.  
PhDr. Ing. Ivan Bertl (until 30 November 2014)

**Faculty of Science**

České mládeže 8, 400 96 Ústí nad Labem

Department of the Faculty in Litvínov: Schola Humanitas, Ukrajinská 379, 436 01 Litvínov

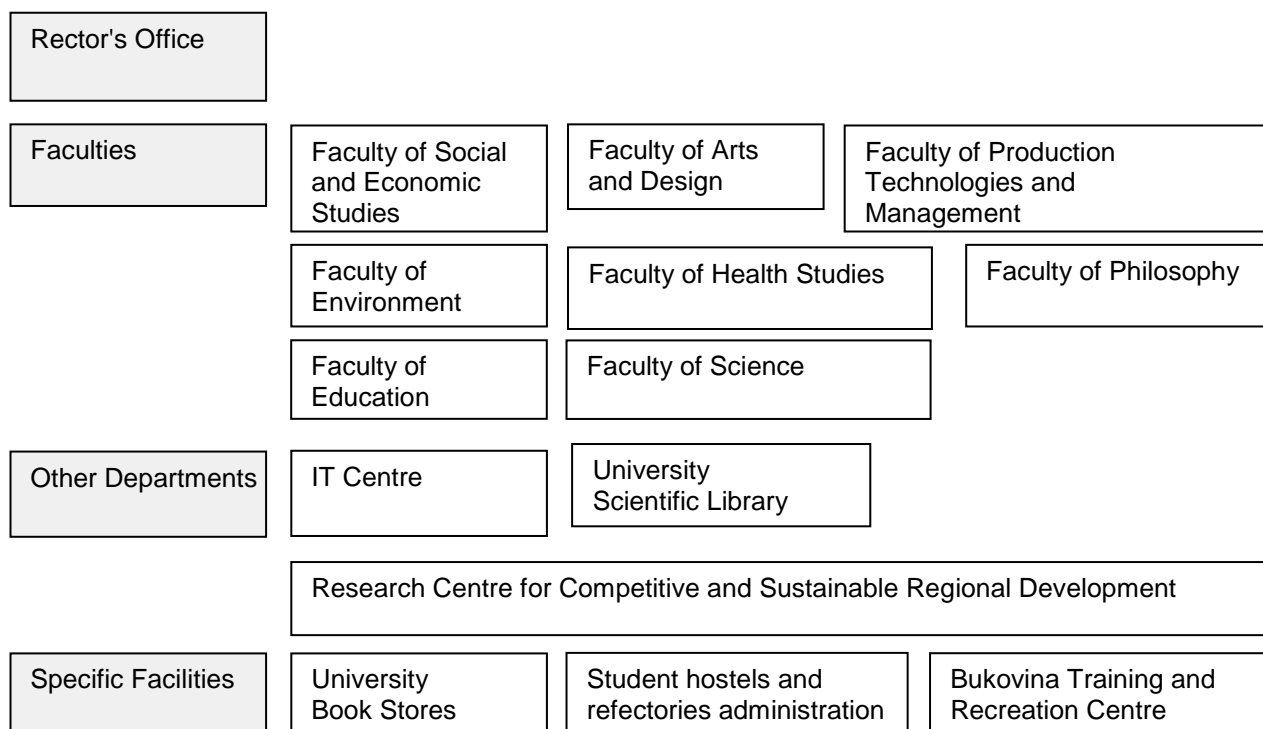
*Faculty management:*

Dean  
Vice-Dean for Study  
  
Vice-Dean for Development and Informatisation  
Vice-Dean for Science and Foreign Relations  
Secretary

doc. RNDr. Jaroslav Pavlík, CSc.  
RNDr. Eva Hejnová, Ph.D. (until 31 October 2014)  
RNDr. Martin Švec, Ph.D. (from 1 November 2014)  
Ing. Pavel Kuba  
prof. RNDr. Pavla Čapková, DrSc.  
Ing. Petr Lauterbach

## 2.b ORGANISATIONAL CHART

University Organisational chart



## 2.c UNIVERSITY BODIES

### 2.c.a MANAGEMENT BOARD

#### *Chairman*

Ing. Leoš Nergl

Czech Statistical Office

#### *Vice-Chairmen*

Ing. Vladimír Feix

Český porcelán, a. s.

PaedDr. Libor Sehnal

AGC Flat Glass Czech, a. s.

#### *Members*

Ing. Roman Budinský

RWE Energie, a. s.

Ing. Václav Hanke, CSc. (until 28 January 2014)

Ministry of Education, Youth and Sports

Ing. Adam Krčál (from 26 September to 11 October 2014)

Ministry of Education, Youth and Sports

MUDr. Jiří Madar

Krajská zdravotní, a. s.

Ing. Josef Molek

Severočeské doly, a. s.

Ing. Břetislav Srsen

Czech National Bank, Branch of Ústí nad Labem

Mag. Jiří Šimek

E.ON Energie, a. s.

Mgr. Milan Šťovíček

Municipal Authority of Litvínov

Ing. Radek Vonka

Regional Authority of the Ústí nad Labem Region

Ing. Jiří Zavoral

AZ Sanace, a. s.



## 2.c.b SCIENTIFIC BOARD

### *Chairman:*

prof. RNDr. René Wokoun, CSc.

University

### *Internal members*

doc. PaedDr. Pavel Doulik, Ph.D.

doc. Ing. Aleš Havlíček, Ph.D.

prof. Ing. František Holešovský, Dr.

University Faculty of Education

University Faculty of Philosophy

University Faculty of Production Technologies and Management

prof. PaedDr. Miloš Hons, CSc.

University Faculty of Education

doc. PhDr. Václav Houžvička, Ph.D.

University Faculty of Social and Economic Studies

doc. PhDr. Michaela Hrubá, Ph.D.

University Faculty of Philosophy

RNDr. Alena Chvátalová, Ph.D.

University

prof. Ing. Jiřina Jílková, CSc.

University

doc. Mgr. Michal Koleček, Ph.D.

University Faculty of Arts and Design

doc. Ing. Tomáš Loučka, CSc.

University Faculty of Environment

doc. Ing. Štefan Michna, Ph.D.

University Faculty of Production Technologies and Management

doc. ak. mal. Karel Mišek, Ph.D.

University Faculty of Arts and Design

prof. RNDr. Stanislav Novák, CSc.

University Faculty of Science

doc. RNDr. Jaroslav Pavlík, CSc.

University Faculty of Science

doc. PhDr. Zdeněk Radvanovský, CSc.

University

Ing. Miroslav Richter, Ph.D., EUR ING

University Faculty of Environment

prof. MUDr. Margareta Šulcová, CSc.

University Faculty of Health Studies

doc. ak. mal. Vladimír Švec

University

doc. MUDr. Miroslav Tichý, CSc.

University Faculty of Health Studies

### *External members*

doc. MUDr. Miroslav Bartoš, CSc.

Mons. Mgr. Jan Baxant

Ing. Rut Bízková

prof. RNDr. Libor Grubhoffer, CSc.

prof. Ing. Richard Hindls, CSc.

Ing. Alexej Hřebíček

Škoda auto, a. s., Mladá Boleslav

Bishopric of Litoměřice, Litoměřice

Technology Agency of the Czech Republic Prague

University of South Bohemia, České Budějovice

University of Economics, Prague

ČEZ, a. s., OJ teplárny Hodonín, Poříčí, Tisová and Trmice, Trmice location

University of Chemistry and Technology in Prague

Ministry of Industry and Trade, Prague

Ministry of Internal Affairs of the Czech Republic, Prague

Institute of Sociology of the Czech Academy of Sciences, Prague

prof. Ing. Stanislav Labík, CSc.

Ing. Marian Piecha, Ph.D.

RNDr. Josef Postránecký

TOS Varnsdorf, a. s., Varnsdorf

Masaryk Institute of Advanced Studies, Prague

prof. PhDr. Svatava Raková, CSc.

Ing. Jan Rýdl

prof. PhDr. Alena Vališová, CSc.

## 2.c.c ACADEMIC SENATE

### *Chairman*

Mgr. Zdeněk Svoboda, Ph.D.

University Faculty of Education

### *Vice-Chairmen*

Mgr. Antonín Kadlec

University Faculty of Philosophy

doc. RNDr. Martin Balej, Ph.D.

University Faculty of Science

### *Academic Personnel*

PhDr. Jan Benda

Faculty of Environment (from September 2015)

Mgr. David Cihlář

Faculty of Education

Ing. Petr Hlaváček, Ph.D.

Faculty of Social and Economic Studies

Mgr. Irena Hralová

Faculty of Production Technologies and Management

Mgr. Jana Chrásková

Faculty of Health Studies

MgA. Radek Jandera

Faculty of Arts and Design

RNDr. Petr Jirásek

Faculty of Environment

RNDr. Jan Krejčí, Ph.D.

Faculty of Science

PhDr. Jiří Koumar, Ph.D.

Faculty of Philosophy

Mgr. Jitka Korfová-Wenclová

Faculty of Health Studies

Mgr. Ivana Lamková, Ph.D.

Faculty of Health Studies

Mgr. Eva Mráziková  
 Mgr. Stanislava Musilová  
 doc. Ing. Martin Novák, Ph.D.  
 Ing. Jan Popelka, Ph.D.  
 Ing. Tomáš Siviček, Ph.D.  
 PhDr. Hana Suchánková, Ph.D.  
 Ing. Jindřich Šulc, CSc.  
 RNDr. Michal Varady, Ph.D.  
 Mgr. Anna Vartecká, Ph.D.  
 Ing. Tomáš Vysloužil, Ph.D.  
 PhDr. Iva Wedlichová, Ph.D.  
 Mgr. Vilém Zábranský, Ph.D.

Faculty of Arts and Design  
 Faculty of Philosophy  
 Faculty of Production Technologies and Management  
 Faculty of Environment (from February 2015)  
 Faculty of Social and Economic Studies  
 Faculty of Social and Economic Studies  
 Faculty of Environment  
 Faculty of Science  
 Faculty of Arts and Design  
 Faculty of Production Technologies and Management  
 Faculty of Education  
 Faculty of Philosophy

#### *Students*

Jakub Andrýsek  
 Bc. Leona Bubáková  
 Ing. Jaromír Cais  
 Bc. Ludmila Dubinská  
 Ing. Miroslav Duda  
 Bc. Barbora Handrychová  
 Bc. Lucie Hružová  
 Bc. Ondřej Janda  
 MgA. Jan C. Löbl  
 Klára Macíková  
 Josef Málek  
 Barbora Moravová  
 Mgr. Milan Rudík  
 Klára Sedmerová  
 Ondřej Thor  
 Bc. Veronika Vondrová  
 Petra Votrubová

Faculty of Health Studies  
 Faculty of Environment  
 Faculty of Production Technologies and Management  
 Faculty of Education  
 Faculty of Science  
 Faculty of Environment  
 Faculty of Science  
 Faculty of Social and Economic Studies  
 Faculty of Arts and Design  
 Faculty of Health Studies (from April 2015)  
 Faculty of Arts and Design (until February 2015)  
 Faculty of Arts and Design (from September 2015)  
 Faculty of Philosophy  
 Faculty of Health Studies (until March 2015)  
 Faculty of Production Technologies and Management  
 Faculty of Education  
 Faculty of Social and Economic Studies

## **2.d PARTICIPATION IN REPRESENTATION OF THE UNIVERSITIES**

### *Representatives in the Czech Rectors Conference*

prof. RNDr. René Wokoun, CSc.

Member

### *Representatives in the Council of Universities*

Ing. Jaromír Cais  
 Dominik Dvořák  
 Ing. Jana Janáková  
 Mgr. Antonín Kadlec  
 Mgr. Martin Kolář, Ph.D.  
 doc. Ing. Zdeňka Kolská, Ph.D.  
 PhDr. Hana Kynštová, Ph.D.  
 Ing. Martin Neruda  
 PhDr. Bc. Kateřina Smejkalová, Ph.D.  
 doc. ak. mal. Vladimír Švec  
 doc. Ing. Helena Vomáčková, CSc.

Member of the assembly  
 Member of the students' chamber  
 Member of the assembly  
 Member of the assembly  
 Member of the assembly  
 Member of the assembly  
 Member of the assembly  
 Member of the assembly  
 Member of the assembly  
 Member of the Board  
 Member of the assembly

## **2.e MISSION, VISION, STRATEGIC OBJECTIVES**

In 2014, the University was fulfilling the mission and the vision stipulated in the University Strategy for 2010–2020

(<http://www.ujep.cz/cz/podle-cinnosti/univerzita/uredni-deska/dokumenty-univerzity/strategie.html>).

**Mission:**

Be the most significant and indispensable research and development, artistic and educational institute in the Ústí nad Labem Region of the Czech Republic - an institute that cooperates with the research and application sphere and that is excellent and internationally recognised in some disciplines.

**Vision:**

- Improve the quality of education and of the research, development, artistic, innovative and other creative activities performed at the University,
- Improve qualification of its employees,
- Improve the University management,
- Deepen cooperation with the private and public sectors,
- Positively affect the events in and take part in development of the Ústí nad Labem Region of the Czech Republic.

The University fulfilled its mission and vision by achieving the strategic objectives stipulated in the University Long-Term Plan for 2011-2015 and in its updated version for 2014 (<http://www.ujep.cz/cz/podle-cinnosti/univerzita/uredni-deska/dokumenty-univerzity/dlouhodobezamery.html>).

**Strategic objectives:**

- Continue developing the structure of the study and educational programmes, continuously improve the quality of their implementation, even by using efficient cooperation of the sections,
- Continue developing the doctoral study programmes, increase the number of students and graduates,
- Increase the number of accredited authorisations to conduct habilitation and professor appointment procedures,
- Optimise the structure of the creative activities according to the outcome of the creative activity and practical needs,
- Support the science, research, innovations, artistic and other creative activities,
- Enhance interconnection of the University performance with the practice,
- Improve the quality of the spatial and technical facilities of the University,
- Improve the economic efficiency and practicality of the University's financial expenditures and further acquisition of additional funds,
- Optimise management of the internal processes of the University,
- Optimise the marketing and publicity activities of the University,
- Enhance the international significance of the University,
- Promote the common integrating interests of the University.

## **2.f CHANGES IN AREA OF INTERNAL REGULATIONS**

In 2014, the internal regulations of the University were the regulations stipulated in Section 17(1)(a-h) of the Act and the following regulations pursuant to Section 17(1)(i) of the Act:

- University Rigorous Code,
- University Lifelong Education Code,
- Code of Habilitation Process and Process for Appointing Professor of the University,
- Rules for making monetary and non-monetary investments in legal entities and discussion of proposals for establishment of legal entities by the Jan Evangelista Purkyně University in Ústí nad Labem.

In the course of 2014, the Ministry of Education, Youth and Sports of the Czech Republic registered the changes in the University Scholarship Rules (7 August 2014). The changes of the Rules were approved by the University Academic Senate on 25 June 2014. The new conditions for allocation of the accommodation and extraordinary scholarship were set up in this internal regulation.

### 3. STUDY PROGRAMMES, ORGANIZATION OF THE STUDY AND EDUCATION

#### 3.a ACCREDITED STUDY PROGRAMMES (Table 3.1)

##### Faculty of Social and Economic Studies

Groups of Study Programmes	Accredited Study Programmes								Total Study Programmes
	Bachelor		Master		Master extension		Doctoral		
	FT	C/D	FT	C/D	FT	C/D	FT	C/D	
Social sciences, studies and services	1	1	-	-	-	-	-	-	2
Economics	2	2	-	-	2	-	-	-	6
<b>Total</b>	<b>3</b>	<b>3</b>	<b>-</b>	<b>-</b>	<b>2</b>	<b>-</b>	<b>-</b>	<b>-</b>	<b>8</b>

##### Faculty of Arts and Design

Groups of Study Programmes	Accredited Study Programmes								Total Study Programmes
	Bachelor		Master		Master extension		Doctoral		
	FT	C/D	FT	C/D	FT	C/D	FT	C/D	
Sciences and disciplines on culture and arts	1	-	-	-	2	-	1	1	5
<b>Total</b>	<b>1</b>	<b>-</b>	<b>-</b>	<b>-</b>	<b>2</b>	<b>-</b>	<b>1</b>	<b>1</b>	<b>5</b>

##### Faculty of Production Technologies and Management

Groups of Study Programmes	Accredited Study Programmes								Total Study Programmes
	Bachelor		Master		Master extension		Doctoral		
	FT	C/D	FT	C/D	FT	C/D	FT	C/D	
Technical sciences and disciplines	4	3	-	-	3	2	2	2	16
Pedagogy, teaching and social care	1	-	-	-	-	-	-	-	1
<b>Total</b>	<b>5</b>	<b>3</b>	<b>-</b>	<b>-</b>	<b>3</b>	<b>2</b>	<b>2</b>	<b>2</b>	<b>17</b>

##### Faculty of Health Studies

Groups of Study Programmes	Accredited Study Programmes								Total Study Programmes
	Bachelor		Master		Master extension		Doctoral		
	FT	C/D	FT	C/D	FT	C/D	FT	C/D	
Health, medical and pharmaceutical sciences and disciplines	3	3	-	-	-	-	-	-	6
<b>Total</b>	<b>3</b>	<b>3</b>	<b>-</b>	<b>-</b>	<b>-</b>	<b>-</b>	<b>-</b>	<b>-</b>	<b>6</b>

##### Faculty of Environment

Groups of Study Programmes	Accredited Study Programmes								Total Study Programmes
	Bachelor		Master		Master extension		Doctoral		
	FT	C/D	FT	C/D	FT	C/D	FT	C/D	
Sciences and disciplines	1	1	-	-	1	1	1	1	6
Technical sciences and disciplines	1	1	-	-	-	-	-	-	2
<b>Total</b>	<b>2</b>	<b>2</b>	<b>-</b>	<b>-</b>	<b>1</b>	<b>1</b>	<b>1</b>	<b>1</b>	<b>8</b>

#### Faculty of Philosophy

Groups of Study Programmes	Accredited Study Programmes								Total Study Programmes
	Bachelor		Master		Master extension		Doctoral		
	FT	C/D	FT	C/D	FT	C/D	FT	C/D	
Social sciences, studies and services	5	2	-	-	4*)	2*)	2	2	17
Pedagogy, teaching and social care	-	-	-	-	1	1	-	-	2
<b>Total</b>	<b>5</b>	<b>2</b>	<b>-</b>	<b>-</b>	<b>5</b>	<b>3</b>	<b>2</b>	<b>2</b>	<b>19</b>

\*) of which 2 study programmes authorised to conduct the state rigorous examinations and grant the PhDr. degree (2 follow-up master's degree programmes, of which 1 in full-time and 1 in combined form of study).

#### Faculty of Education

Groups of Study Programmes	Accredited Study Programmes								Total Study Programmes
	Bachelor		Master		Master extension		Doctoral		
	FT	C/D	FT	C/D	FT	C/D	FT	C/D	
Sciences and disciplines	-	-	1	-	-	-	-	-	1
Social sciences, studies and services	1	-	-	-	-	-	-	-	1
Pedagogy, teaching and social care	4	3	3*)	2	4*)	2	1	1	20
<b>Total</b>	<b>5</b>	<b>3</b>	<b>4</b>	<b>2</b>	<b>4</b>	<b>2</b>	<b>1</b>	<b>1</b>	<b>22</b>

\*) of which 4 study programmes authorized to conduct the state rigorous examinations and grant the PhDr. degree (2 master's degree and 2 follow-up master's degree programmes, always in the full-time form of study).

#### Faculty of Science

Groups of Study Programmes	Accredited Study Programmes								Total Study Programmes
	Bachelor		Master		Master extension		Doctoral		
	FT	C/D	FT	C/D	FT	C/D	FT	C/D	
Sciences and disciplines	11	5	-	-	7*)	2*)	4	4	33
Technical sciences and disciplines	1	-	-	-	1*)	-	2	2	6
<b>Total</b>	<b>12</b>	<b>5</b>	<b>-</b>	<b>-</b>	<b>8</b>	<b>2</b>	<b>6</b>	<b>6</b>	<b>39</b>

\*) of which 6 study programmes authorised to conduct the state rigorous examinations and grant the RNDr. degree. (6 follow-up master's degree programmes, of which 4 in full-time and 2 in combined form of study).

#### Total for the University

Groups of Study Programmes	Accredited Study Programmes								Total Study Programmes
	Bachelor		Master		Master extension		Doctoral		
	FT	C/D	FT	C/D	FT	C/D	FT	C/D	
Sciences and disciplines	12	6	1	-	8	3	5	5	40
Technical sciences and disciplines	6	4	-	-	4	2	4	4	24
Health, medical and pharmaceutical sciences and disciplines	3	3	-	-	-	-	-	-	6
Social sciences, studies and services	7	3	-	-	4	2	2	2	20
Economics	2	2	-	-	2	-	-	-	6
Pedagogy, teaching and social care	5	3	3	2	5	3	1	1	23
Sciences and disciplines on culture and arts	1	-	-	-	2	-	1	1	5
<b>Total</b>	<b>36</b>	<b>21</b>	<b>4</b>	<b>2</b>	<b>25</b>	<b>10</b>	<b>13</b>	<b>13</b>	<b>124</b>

By University faculty

University Faculty	Accredited Study Programmes								Total Study Programmes
	Bachelor		Master		Master extension		Doctoral		
	FT	C/D	FT	C/D	FT	C/D	FT	C/D	
Faculty of Social and Economic Studies	3	3	-	-	2	-	-	-	8
Faculty of Arts and Design	1	-	-	-	2	-	1	1	5
Faculty of Production Technologies and Management	5	3	-	-	3	2	2	2	17
Faculty of Health Studies	3	3	-	-	-	-	-	-	6
Faculty of Environment	2	2	-	-	1	1	1	1	8
Faculty of Philosophy	5	2	-	-	5	3	2	2	19
Faculty of Education	5	3	4	2	4	2	1	1	22
Faculty of Science	12	5	-	-	8	2	6	6	39
Total	36	21	4	2	25	10	13	13	124

By the right to conduct the rigorous procedure

Groups of Study Programmes	Degree	Accredited Study Programmes with the Right of Rigorous Procedure				Total Study Programmes
		Bachelor	Master	Master extension	Doctoral	
Sciences and disciplines	RNDr.	-	-	5	-	5
Technical sciences	RNDr.	-	-	1	-	1
Social sciences, studies and services	PhDr.	-	-	2	-	2
Pedagogy, teaching and social care	PhDr.	-	2	2	-	4
<b>Total</b>		-	<b>2</b>	<b>10</b>	-	<b>12</b>

### 3.b ACCREDITED STUDY PROGRAMMES TAUGHT IN FOREIGN LANGUAGES (Table 3.2)

Faculty of Arts and Design

Groups of Study Programmes	Accredited Study Programmes								Total Study Programmes
	Bachelor		Master		Master extension		Doctoral		
	FT	C/D	FT	C/D	FT	C/D	FT	C/D	
Sciences and disciplines on culture and arts	-	-	-	-	1	-	-	-	1
<b>Total</b>	-	-	-	-	<b>1</b>	-	-	-	<b>1</b>

Faculty of Philosophy

Groups of Study Programmes	Accredited Study Programmes								Total Study Programmes
	Bachelor		Master		Master extension		Doctoral		
	FT	C/D	FT	C/D	FT	C/D	FT	C/D	
Social sciences, studies and services	-	-	-	-	-	-	1	1	2
<b>Total</b>	-	-	-	-	-	-	<b>1</b>	<b>1</b>	<b>2</b>

Faculty of Education

Groups of Study Programmes	Accredited Study Programmes								Total Study Programmes
	Bachelor		Master		Master extension		Doctoral		
	FT	C/D	FT	C/D	FT	C/D	FT	C/D	
Pedagogy, teaching and social care	1	-	-	-	-	-	-	-	1
<b>Total</b>	<b>1</b>	<b>-</b>	<b>-</b>	<b>-</b>	<b>-</b>	<b>-</b>	<b>-</b>	<b>-</b>	<b>1</b>

## Faculty of Science

Faculty of Science	Groups of Study Programmes	Accredited Study Programmes							Total Study Programmes	
		Bachelor		Master		Master extension		Doctoral		
		FT	C/D	FT	C/D	FT	C/D	FT		C/D
	Sciences and disciplines	2	-	-	-	1	-	2	2	7
	Technical sciences and disciplines	-	-	-	-	-	-	1	1	2
	<b>Total</b>	<b>2</b>	<b>-</b>	<b>-</b>	<b>-</b>	<b>1</b>	<b>-</b>	<b>3</b>	<b>3</b>	<b>9</b>

## Total for the University

Groups of Study Programmes	Accredited Study Programmes								Total Study Programmes
	Bachelor		Master		Master extension		Doctoral		
	FT	C/D	FT	C/D	FT	C/D	FT	C/D	
Sciences and disciplines	2	-	-	-	1	-	2	2	7
Technical sciences and disciplines	-	-	-	-	-	-	1	1	2
Social sciences, studies and services	-	-	-	-	-	-	1	1	2
Pedagogy, teaching and social care	1	-	-	-	-	-	-	-	1
Sciences and disciplines on culture and arts	-	-	-	-	1	-	-	-	1
<b>Total</b>	<b>3</b>	<b>-</b>	<b>-</b>	<b>-</b>	<b>2</b>	<b>-</b>	<b>4</b>	<b>4</b>	<b>13</b>

## By University faculty

University Faculty	Accredited Study Programmes								Total Study Programmes
	Bachelor		Master		Master extension		Doctoral		
	FT	C/D	FT	C/D	FT	C/D	FT	C/D	
Faculty of Arts and Design	-	-	-	-	1	-	-	-	1
Faculty of Philosophy	-	-	-	-	-	-	1	1	2
Faculty of Education	1	-	-	-	-	-	-	-	1
Faculty of Science	2	-	-	-	1	-	3	3	9
<b>Total</b>	<b>3</b>	<b>-</b>	<b>-</b>	<b>-</b>	<b>2</b>	<b>-</b>	<b>4</b>	<b>4</b>	<b>13</b>

### 3.c JOINT/DOUBLE/MULTIPLE DEGREE STUDY PROGRAMMES (Table 3.3.)

## Faculty of Philosophy

Name of Study Programme/Discipline	Philology/German philology in the Czech-German inter-cultural context
KKOV group	61-79 Social sciences and disciplines
Partner university	Bayreuth University (Germany)
Name of the partner university's study programme	Inter-cultural German studies
Programme start	2013
Programme type	double degree programme
Study duration	2 years/4 semesters
Study programme type	follow-up master's degree
Description of the study organization, including admission of students and terminations	The applicant must be a student of German philology in the Czech-German inter-cultural context of the University Faculty of Philosophy and successfully pass the selection procedure for the double degree programme study in course of the 2nd semester. For the study period, the student must receive 120 ECTS credits, of which 60 credits for part I of the study (1st and 2nd semesters) at the home university and 60 credits for part II of the study (3rd and 4th semesters) at the partner university. The final thesis in the minimum scope of 60 pages is written in German and is guided by pedagogues from both universities.

Name of Study Programme/Discipline	Philology/German philology in the Czech-German inter-cultural context
Diploma and diploma supplement issue method	After the student completes the bilaterally contracted study plan at each of the two partner universities, he obtains the master's degree from each of them. After successful completion of the German philology in the Czech-German inter-cultural context study at the University, the graduate receives the diploma authorising him to use the "Master" academic degree (abbreviated as Mgr. attached before the name) and the diploma supplement. After successful completion of the Inter-cultural German studies at the Bayreuth University, the graduate receives the diploma authorising him to use the "Master of Art" academic degree (abbreviated as M.A. attached after the name) and the diploma supplement.
Method of students exchange	The selection board, the members of which come from both universities, selects students for the study at the partner university based on the current study results, curriculum vitae and motivation letter of the student.

### 3.d ACCREDITED STUDY PROGRAMMES CONDUCTED WITH ANOTHER UNIVERSITY IN THE CZECH REPUBLIC (Table 3.4)

#### Faculty of Science

Name of Study Programme/Discipline	Mathematics/General problems of mathematics
KKOV group	10-18 Sciences and disciplines
Partner university	University of West Bohemia, Faculty of Applied Sciences
Programme start	2008
Form of study	Full-time and combined
Study duration (semesters)	4 years/8 semesters
Programme type (bachelor, continuing master's degree, master's, doctoral)	Doctoral
Description of the study organization, including admission of students and terminations	The study is conducted in a full-time or combined form under the Agreement on joint study programme and amendment to such agreement entered into by and between the Faculty of Applied Sciences of the University of West Bohemia, and the Faculty of Science of the University. Students are admitted for the study based on the entrance examination in line with the agreement, Amendment to the agreement and the admission procedure conditions of the University Faculty of Science. The study is completed by passing the state doctoral examination and defending the dissertation thesis in line with the Study and Examination Rules for study in the doctoral study programmes of the University Faculty of Science.
Name of Study Programme/Discipline	Mathematics/ General Problems of Mathematics
KKOV group	10-18 Sciences and disciplines
Partner university	University of West Bohemia, Faculty of Applied Sciences
Programme start	2011
Study duration (semesters)	Full-time and combined
Programme type (bachelor, continuing master's degree, master's, doctoral)	4 years/8 semesters
Description of the study organization, including admission of students and terminations	Doctoral
	The study was prepared for implementation consistently with the study programme conducted



### 3.e ACCREDITED STUDY PROGRAMMES CONDUCTED WITH A HIGHER VOCATIONAL SCHOOL (Table 3.5)

Faculty of Environment

Name of Study Programme/Discipline	Ecology and environmental protection/Environmental analytical chemistry
KKOV group	10-18 Sciences and disciplines
Partner	Ústav anorganické chemie Akademie věd ČR, v. v. i., Řež, Husinec-Řež, č. p. 1001
Programme start	2009
Form of study	Full-time and combined
Study duration	4 years/8 semesters
Study programme type	Doctoral
Description of the study organisation	The study is conducted in a full-time or combined form under the Agreement on joint study discipline entered into by and between the University Faculty of Environment and ÚAnCh, v. v. i., Řež. The students are admitted for the study based on the entrance examination in line with the agreement and the admission procedure conditions of the University Faculty of Environment. The study is completed by passing the state doctoral examination and defending the dissertation thesis in line with the Study and Examination Rules for study in the doctoral study programmes of the University.

### 3.f ACCREDITED STUDY PROGRAMMES CONDUCTED OUTSIDE THE PRINCIPAL SITE

Faculty of Production Technologies and Management

Name of Study Programme/Discipline	Engineering technology/Production management
KKOV group	21-39 Technical sciences and disciplines
Name and address of department/field department where the accredited study programmes or their parts are taught	Střední průmyslová škola a Vyšší odborná škola Chomutov, Školní 50, Chomutov
Form of study	Combined
Study duration	3 years/6 semesters
Study programme type	Bachelor
Final state examination at the department	No
Defence of final qualification theses at the department	No
Number of permanent employees of the department	0

Faculty of Environment

Name of Study Programme/Discipline	Ecology and environmental protection/Environmental protection
KKOV group	10-18 Sciences and disciplines
Name and address of department/field department where the accredited study programmes or their parts are taught	Department of the Faculty of Environment in Most, Dělnická 21, Most
Form of study	Full-time and combined
Study duration	3 years/6 semesters
Study programme type	Bachelor
Final state examination at the department	No
Defence of final qualification theses at the department	No
Number of permanent employees of the department	6
Name of Study Programme/Discipline	Ecology and environmental protection/Environmental analytical chemistry
KKOV group	10-18 Sciences and disciplines
Name of the department where the accredited study programmes are lectured or their sections	Ústav anorganické chemie Akademie věd ČR, v. v. i., Řež, Husinec-Řež, č. p. 1001

Name of Study Programme/Discipline	Ecology and environmental protection/Environmental analytical chemistry
Form of study	Full-time and combined
Study duration	4 years/8 semesters
Study programme type	Doctoral
Final state examination at the department	No
Defence of final qualification theses at the department	No
Number of permanent employees of the department	0

### 3.g ACCREDITED STUDY PROGRAMMES IN COMPLIANCE WITH THE NATIONAL REFERENCE FRAMEWORK OF TERTIARY EDUCATION

In the past years, the University participated in the pilot implementation of the national reference framework of tertiary education under the project of the Ministry of Education, Youth and Sports (IPn Q-Ram). Based on this experience, it continued the process of implementing the qualification framework across the institute and meeting the new requirements imposed by the Ministry of Education, Youth and Sports for accreditation of study programmes pursuant to the amended Decree No. 42/1999 Coll. on the accreditation application content.

In the course of 2014, the methodology of education outcome was used to describe any and all study programmes submitted for accreditation or re-accreditation, so the total number of the study programmes with the implemented qualification framework of tertiary education (without distinguishing the form of study) increased to 65. This is how the bachelor's, master's and follow-up master's degree study programmes were described in all faculties of the University.

### 3.h STUDY CREDIT SYSTEM

The bachelor, master and continuing master study programs were conducted in the ECTS-compatible credit system at all faculties of the University. The recommended annual study plan is evaluated by 60 credits proportionately divided among the subjects in the plan with respect to the amount of study necessary for passing the subjects. The number of credits allocated to the subject is a whole number and is not dependant on how well the student passes the relevant subject.

In the doctoral study programmes, check of the individual study plan of a doctorand is assigned to the competent discipline board and the credit system is not used by most of the faculties. In terms of the doctoral studies, the following were conducted in the credit system in 2014:

- Doctoral study programme Ecology and Environmental Protection with the discipline of Environmental Analytical Chemistry jointly conducted by the Faculty of Environment and Institute of Inorganic Chemistry of the Czech Academy of Sciences in Řež (study programme in both full-time and combined form of study),
- Doctoral study programme Specialisation in Education with the disciplines of Music Theory and Pedagogy, Theory of Visual Arts and Czech Studies Theory carried out by the Faculty of Education (study programme in both full-time and combined form of study).

In 2014, the University updated the Information Package (information about the institute, University sections, information for students), the Course Catalogue and Information on degree programmes according to the criteria of the ECTS label. Since 2005, the University has been issuing a bilingual Czech and English diploma supplement to the graduates of all types of study programmes which was awarded the DS label from the European Committee in 2009. In 2013, the University successfully applied for extension of this certificate and was awarded the DS label for the period of 2013-2016.

### 3.i OTHER EDUCATIONAL ACTIVITIES

Beyond the scope of the accredited study programmes, the University performed other specialized educational activities for the students (selection):

- Invited lectures of domestic and foreign experts including the practitioners (Faculty of Philosophy, Faculty of Social and Economic Studies, Faculty of Arts and Design, Faculty of

- Production Technologies and Management, Faculty of Health Studies, Faculty of Environment, Faculty of Education, Faculty of Science),
- Internships, residencies, learning pathways, field trips (both domestic and international) (Faculty of Philosophy, Faculty of Social and Economic Studies, Faculty of Arts and Design, Faculty of Production Technologies and Management, Faculty of Health Studies, Faculty of Environment, Faculty of Education, Faculty of Science, VYCERRO),
  - Discipline days (Faculty of Health Studies, Faculty of Science),
  - Courses focused on development of competences in the area of research and development presentation (Faculty of Philosophy, Faculty of Production Technologies and Management, Faculty of Health Studies, Faculty of Education, Faculty of Science),
  - Language courses for students (Faculty of Social and Economic Studies),
  - Preparatory courses for language examinations in the City & Guilds accredited centre (Faculty of Social and Economic Studies),
  - Courses for instructors (Faculty of Education),
  - Preparatory courses for the freshmen (Faculty of Production Technologies and Management, Faculty of Environment, Faculty of Science),
  - Preparatory courses for the study applicants (Faculty of Social and Economic Studies),
  - Summer school of history for the secondary school students (Faculty of Philosophy),
  - Cisco Certified Network Associate courses under Cisco Networking Academy (Faculty of Science).

Selected educational activities were performed with the support of the ESF project:

- Inclusive university, inclusive science - development of competences in area of research and development presentation (Faculty of Philosophy, Faculty of Production Technologies and Management, Faculty of Health Studies, Faculty of Education, Faculty of Science),
- Partnership as a way to improve the quality of human resources preparation for science and technical education - development of competences in the area of exploration-oriented science and technical education (Faculty of Production Technologies and Management, Faculty of Education, Faculty of Science),
- Corona culturae/Innovation of arts disciplines in various sections of the University - domestic and foreign field trips, education (Faculty of Philosophy, Faculty of Arts and Design, Faculty of Education),
- Multimedia education of students of the master's degree study programmes - development of competences in the area of research and development presentation (Faculty of Philosophy),
- Communitas for praxis – internship (Faculty of Philosophy), and others.

## 4. STUDENTS

### 4.a STUDENTS IN ACCREDITED STUDY PROGRAMMES (as of 31 October 2014) (Table 4.1)

#### Faculty of Social and Economic Studies

Groups of Study Programmes	Students in the Study Programme								Total
	Bachelor		Master		Master extension		Doctoral		
	FT	C	FT	C	FT	C	FT	C	
Social sciences, studies and services	250	158	-	-	-	-	-	-	408
Economics	675	365	-	-	364	-	-	-	1,404
<b>Total</b>	<b>925</b>	<b>523</b>	<b>-</b>	<b>-</b>	<b>364</b>	<b>-</b>	<b>-</b>	<b>-</b>	<b>1,812</b>

#### Faculty of Arts and Design

Groups of Study Programmes	Students in the Study Programme								Total
	Bachelor		Master		Master extension		Doctoral		
	FT	C	FT	C	FT	C	FT	C	
Sciences and disciplines on culture and the arts	263	-	-	-	184	-	7	38	492
Total	263	-	-	-	184	-	7	38	492

#### Faculty of Production Technologies and Management

Groups of Study Programmes	Students in the Study Programme								Total
	Bachelor		Master		Master extension		Doctoral		
	FT	C	FT	C	FT	C	FT	C	
Technical sciences and disciplines	324	400	-	-	29	64	19	15	851
Total	324	400	-	-	29	64	19	15	851

#### Faculty of Health Studies

Groups of Study Programmes	Students in the Study Programme								Total
	Bachelor		Master		Master extension		Doctoral		
	FT	C	FT	C	FT	C	FT	C	
Health, medical and pharmaceutical sciences and studies	475	134	-	-	-	-	-	-	609
<b>Total</b>	<b>475</b>	<b>134</b>	<b>-</b>	<b>-</b>	<b>-</b>	<b>-</b>	<b>-</b>	<b>-</b>	<b>609</b>

#### Faculty of Environment

Groups of Study Programmes	Students in the Study Programme								Total
	Bachelor		Master		Master extension		Doctoral		
	FT	C	FT	C	FT	C	FT	C	
Sciences and disciplines	283	256	-	-	115	105	11	2	772
Technical sciences and disciplines	9	21	-	-	-	-	-	-	30
Total	292	277	-	-	115	105	11	2	802

#### Faculty of Philosophy

Groups of Study Programmes	Students in the Study Programme								Total
	Bachelor		Master		Master extension		Doctoral		
	FT	C	FT	C	FT	C	FT	C	
Social sciences, studies and services	583	251	-	-	244	-	17	21	1,116
Pedagogy, teaching and social care	-	-	-	-	9	32	-	-	41
Total	583	251	-	-	253	32	17	21	1,157

## Faculty of Education

Faculty of Education Groups of Study Programmes	Students in the Study Programme								Total
	Bachelor		Master		Master extension		Doctoral		
	FT	C	FT	C	FT	C	FT	C	
Sciences and disciplines	-	-	1	-	-	-	-	-	1
Social sciences, studies and services	241	-	-	-	-	-	-	-	241
Pedagogy, teaching and social care	1,557	696	267	309	500	-	58	21	3,408
<b>Total</b>	<b>1,798</b>	<b>696</b>	<b>268</b>	<b>309</b>	<b>500</b>	<b>-</b>	<b>58</b>	<b>21</b>	<b>3,650</b>

## Faculty of Science

Groups of Study Programmes	Students in the Study Programme								Total
	Bachelor		Master		Master extension		Doctoral		
	FT	C	FT	C	FT	C	FT	C	
Sciences and disciplines	786	149	-	-	137	3	7	10	1,092
Technical sciences and disciplines	-	-	-	-	11	-	2	2	15
<b>Total</b>	<b>786</b>	<b>149</b>	<b>-</b>	<b>-</b>	<b>148</b>	<b>3</b>	<b>9</b>	<b>12</b>	<b>1,107</b>

## Total for the University

Groups of Study Programmes	Students in the Study Programme								Total
	Bachelor		Master		Master extension		Doctoral		
	FT	C	FT	C	FT	C	FT	C	
Sciences and disciplines	1,069	405	1	-	252	108	18	12	1,865
Technical sciences and disciplines	333	421	-	-	40	64	21	17	896
Health, medical and pharmaceutical sciences and disciplines	475	134	-	-	-	-	-	-	609
Social sciences, studies and services	1,074	409	-	-	244	-	17	21	1,765
Economics	675	365	-	-	364	-	-	-	1,404
Pedagogy, teaching and social care	1,557	696	267	309	509	32	58	21	3,449
Sciences and disciplines on culture and the arts	263	-	-	-	184	-	7	38	492
Total	5.446	2.430	268	309	1.593	204	121	109	10.480*

\* of which 76 short-term visits.

## By University faculty

University Faculty	Students in the Study Programme								Total
	Bachelor		Master		Master extension		Doctoral		
	FT	C	FT	C	FT	C	FT	C	
Faculty of Social and Economic Studies	925	523	-	-	364	-	-	-	1,812
Faculty of Arts and Design	263	-	-	-	184	-	7	38	492
Faculty of Production Technologies and Management	324	400	-	-	29	64	19	15	851
Faculty of Health Studies	475	134	-	-	-	-	-	-	609
Faculty of Environment	292	277	-	-	115	105	11	2	802
Faculty of Philosophy	583	251	-	-	253	32	17	21	1,157
Faculty of Education	1,798	696	268	309	500	-	58	21	3,650
Faculty of Science	786	149	-	-	148	3	9	12	1,107
Total	5.446	2.430	268	309	1.593	204	121	109	10.480*

\* of which 76 short-term visits.

#### By study location

Study location	Students in the Study Programme								Total
	Bachelor		Master		Master extension		Doctoral		
	FT	C	FT	C	FT	C	FT	C	
Ústí nad Labem	5,394	2,259	268	309	1,593	204	117	109	10,253
Chomutov	-	82	-	-	-	-	-	-	82
Most	52	89	-	-	-	-	-	-	141
Husinec/Řež	-	-	-	-	-	-	4	-	4
Total	5,446	2,430	268	309	1,593	204	121	109	10,480*

\* of which 76 short-term visits.

#### Trend in the number of students in 2010-2014

Number of students as of 31 October in the year	Students in the Study Programme				Total
	Bachelor	Master	Master extension	Doctoral	
2010	9,069	1,474	1,237	175	11,955
2011	9,192	1,143	1,377	192	11,904
2012	8,812	799	1,538	213	11,362
2013	8,452	613	1,673	222	10,960
2014	7,876	577	1,797	230	10,480

#### 4.a.a STUDENTS IN ACCREDITED STUDY PROGRAMMES (as of 31 October 2014)

##### Total for the University

Groups of Study Programmes	Students in the Study Programme								Total
	Bachelor		Master		Master extension		Doctoral		
	FT	C	FT	C	FT	C	FT	C	
Sciences and disciplines	37	6	-	-	4	1	-	-	48
Technical sciences and disciplines	10	7	-	-	3	-	4	-	24
Health, medical and pharmaceutical sciences and disciplines	11	3	-	-	-	-	-	-	14
Social sciences, studies and services	74	4	-	-	6	-	-	1	85
Economics	25	5	-	-	8	-	-	-	38
Pedagogy, teaching and social care	20	1	7	1	7	1	1	2	40
Sciences and disciplines on culture and arts	25	-	-	-	24	-	-	2	51
Total	202	26	7	1	52	2	5	5	300

##### By University faculty

University Faculty	Students in the Study Programme								Total
	Bachelor		Master		Master extension		Doctoral		
	FT	C	FT	C	FT	C	FT	C	
Faculty of Social and Economic Studies	28	7	-	-	8	-	-	-	43
Faculty of Arts and Design	25	-	-	-	24	-	-	2	51
Faculty of Production Technologies and Management	10	7	-	-	3	-	4	-	24
Faculty of Health Studies	11	3	-	-	-	-	-	-	14
Faculty of Environment	16	4	-	-	1	1	-	-	22
Faculty of Philosophy	28	2	-	-	6	1	-	1	38
Faculty of Education	63	1	7	1	7	-	1	2	82
Faculty of Science	21	2	-	-	3	-	-	-	26
Total	202	26	7	1	52	2	5	5	300

#### 4.b STUDENTS - SELF-PAYERS (as of 31 October 2014) (Table 4.2)

##### Faculty of Arts and Design

Groups of Study Programmes	Students in the Study Programme								Total
	Bachelor		Master		Master extension		Doctoral		
	FT	C	FT	C	FT	C	FT	C	
Sciences and disciplines on culture and the arts	-	-	-	-	11	-	-	-	11
<b>Total</b>	-	-	-	-	11	-	-	-	11

##### Faculty of Philosophy

Groups of Study Programmes	Students in the Study Programme								Total
	Bachelor		Master		Master extension		Doctoral		
	FT	C	FT	C	FT	C	FT	C	
Social sciences, studies and services	-	-	-	-	-	-	-	1	1
<b>Total</b>	-	-	-	-	-	-	-	1	1

#### 4.c STUDENTS OVER 30 YEARS OF AGE (as of 31 October 2014) (Table 4.3)

##### Faculty of Social and Economic Studies

Groups of Study Programmes	Students in the Study Programme								Total
	Bachelor		Master		Master extension		Doctoral		
	FT	C	FT	C	FT	C	FT	C	
Social sciences, studies and services	1	67	-	-	-	-	-	-	68
Economics	-	149	-	-	35	-	-	-	184
<b>Total</b>	<b>1</b>	<b>216</b>	<b>-</b>	<b>-</b>	<b>35</b>	<b>-</b>	<b>-</b>	<b>-</b>	<b>252</b>

##### Faculty of Arts and Design

Groups of Study Programmes	Students in the Study Programme								Total
	Bachelor		Master		Master extension		Doctoral		
	FT	C	FT	C	FT	C	FT	C	
Sciences and disciplines on culture and the arts	2	-	-	-	12	-	3	31	48
<b>Total</b>	<b>2</b>	<b>-</b>	<b>-</b>	<b>-</b>	<b>12</b>	<b>-</b>	<b>3</b>	<b>31</b>	<b>48</b>

##### Faculty of Production Technologies and Management

Groups of Study Programmes	Students in the Study Programme								Total
	Bachelor		Master		Master extension		Doctoral		
	FT	C	FT	C	FT	C	FT	C	
Technical sciences and disciplines	-	132	-	-	-	37	7	13	189
<b>Total</b>	-	132	-	-	-	37	7	13	189

##### Faculty of Health Studies

Groups of Study Programmes	Students in the Study Programme								Total
	Bachelor		Master		Master extension		Doctoral		
	FT	C	FT	C	FT	C	FT	C	
Health, medical and pharmaceutical sciences and disciplines	6	120	-	-	-	-	-	-	126
<b>Total</b>	<b>6</b>	<b>120</b>	<b>-</b>	<b>-</b>	<b>-</b>	<b>-</b>	<b>-</b>	<b>-</b>	<b>126</b>

### Faculty of Environment

Groups of Study Programmes	Students in the Study Programme								Total
	Bachelor		Master		Master extension		Doctoral		
	FT	C	FT	C	FT	C	FT	C	
Sciences and disciplines	1	131	-	-	4	71	3	2	212
Technical sciences and disciplines	-	16	-	-	-	-	-	-	16
<b>Total</b>	<b>1</b>	<b>147</b>	<b>-</b>	<b>-</b>	<b>4</b>	<b>71</b>	<b>3</b>	<b>2</b>	<b>228</b>

### Faculty of Philosophy

Groups of Study Programmes	Students in the Study Programme								Total
	Bachelor		Master		Master extension		Doctoral		
	FT	C	FT	C	FT	C	FT	C	
Social sciences, studies and services	16	166	-	-	11	-	6	17	216
Pedagogy, teaching and social care	-	-	-	-	-	21	-	-	21
Total	16	166	-	-	11	21	6	17	237

### Faculty of Education

Groups of Study Programmes	Students in the Study Programme								Total
	Bachelor		Master		Master extension		Doctoral		
	FT	C	FT	C	FT	C	FT	C	
Sciences and disciplines	-	-	1	-	-	-	-	-	1
Social sciences, studies and services	13	-	-	-	-	-	-	-	13
Pedagogy, teaching and social care	102	416	7	194	101	-	36	20	876
<b>Total</b>	<b>115</b>	<b>416</b>	<b>8</b>	<b>194</b>	<b>101</b>	<b>-</b>	<b>36</b>	<b>20</b>	<b>890</b>

### Faculty of Science

Groups of Study Programmes	Students in the Study Programme								Total
	Bachelor		Master		Master extension		Doctoral		
	FT	C	FT	C	FT	C	FT	C	
Sciences and disciplines	11	69	-	-	5	2	3	10	100
Technical sciences and disciplines	-	-	-	-	1	-	1	1	3
Total	11	69	-	-	6	2	4	11	103

### Total for the University

Groups of Study Programmes	Students in the Study Programme								Total
	Bachelor		Master		Master extension		Doctoral		
	FT	C	FT	C	FT	C	FT	C	
Sciences and disciplines	12	200	1	-	9	73	6	12	313
Technical sciences and disciplines	-	148	-	-	1	37	8	14	208
Health, medical and pharmaceutical sciences and disciplines	6	120	-	-	-	-	-	-	126
Social sciences, studies and services	30	233	-	-	11	-	6	17	297
Economics	-	149	-	-	35	-	-	-	184
Pedagogy, teaching and social care	102	416	7	194	101	21	36	20	897
Sciences and disciplines on culture and arts	2	-	-	-	12	-	3	31	48
Total	152	1.266	8	194	169	131	59	94	2.073



By University faculty

By University faculty

University Faculty	Students in the Study Programme								Total
	Bachelor		Master		Master extension		Doctoral		
	FT	C	FT	C	FT	C	FT	C	
Faculty of Social and Economic Studies	1	216	-	-	35	-	-	-	252
Faculty of Arts and Design	2	-	-	-	12	-	3	31	48
Faculty of Production Technologies and Management	-	132	-	-	-	37	7	13	189
Faculty of Health Studies	6	120	-	-	-	-	-	-	126
Faculty of Environment	1	147	-	-	4	71	3	2	228
Faculty of Philosophy	16	166	-	-	11	21	6	17	237
Faculty of Education	115	416	8	194	101	-	36	20	890
Faculty of Science	11	69	-	-	6	2	4	11	103
Total	152	1.266	8	194	169	131	59	94	2.073

#### 4.d UNSUCCESSFUL STUDENTS (from 1 January 2014 to 31 December 2014) (Table 4.4)

Total for the University

Groups of Study Programmes	Unsuccessful Students in the Study Programme								Total
	Bachelor		Master		Master extension		Doctoral		
	FT	C	FT	C	FT	C	FT	C	
Sciences and disciplines	461	181	1	-	36	11	1	3	694
Technical sciences and disciplines	189	185	-	-	7	14	3	3	401
Health, medical and pharmaceutical sciences and disciplines	65	5	-	-	-	-	-	-	70
Social sciences, studies and services	359	121	-	-	31	-	4	2	517
Economics	169	101	-	-	45	-	-	-	315
Pedagogy, teaching and social care	392	76	34	28	32	3	3	2	570
Sciences and disciplines on culture and the arts	22	-	-	-	5	-	2	5	34
Total	1.657	669	35	28	156	28	13	15	2.601

By University faculty

University Faculty	Unsuccessful Students in the Study Programme								Total
	Bachelor		Master		Master extension		Doctoral		
	FT	C	FT	C	FT	C	FT	C	
Faculty of Social and Economic Studies	225	150	-	-	45	-	-	-	420
Faculty of Arts and Design	22	-	-	-	5	-	2	5	34
Faculty of Production Technologies and Management	186	180	-	-	5	14	3	3	391
Faculty of Health Studies	65	5	-	-	-	-	-	-	70
Faculty of Environment	118	132	-	-	8	11	-	2	271
Faculty of Philosophy	230	72	-	-	37	3	4	2	348
Faculty of Education	465	76	35	28	26	-	3	2	635
Faculty of Science	346	54	-	-	30	-	1	1	432
Total	1.657	669	35	28	156	28	13	15	2.601

#### 4.e MEASURES TO REDUCE THE FAILURE OF STUDY

The individual faculties of the University have been taking measures to reduce the study failures in the long term, in particular:

- Developing consultancy for applicants - ensuring consultancies on the study discipline selection before the admission procedure (Faculty of Arts and Design, Faculty of Education),
- Offering preparatory courses for critical subjects of the entrance examination (Faculty of Social and Economic Studies),
- Keeping high demands for the applicants at the talent or written entrance examinations, or implementing the general study propensity tests (Faculty of Social and Economic Studies, Faculty of Arts and Design, Faculty of Health Studies, Faculty of Education),
- Implementing and conducting motivation interviews in the admission procedure (Faculty of Philosophy, Faculty of Education, Faculty of Arts and Design),
- Implementation of weekly preparatory courses for students enrolled for the first year of the bachelor degree study (Faculty of Production Technologies and Management, Faculty of Environment, Faculty of Science),
- Implementing the continuous stabilisation courses in the first year of the bachelor's degree study (Faculty of Environment, Faculty of Science),
- Modifying the study plans - implementing the induction courses in the first semester of the bachelor study programmes, implementing the refresher seminars in courses with a high level of failure of study and implementing seminars on the final state examinations in the last semester of the bachelor and master degree study programmes (Faculty of Philosophy, Faculty of Social and Economic Studies, Faculty of Health Studies, Faculty of Environment, Faculty of Education, Faculty of Science, Faculty of Production Technologies and Management),
- In case of two-discipline studies, enabling transfers of students who do not meet the study requirements of one of the disciplines of the selected combination (Faculty of Philosophy, Faculty of Education, Faculty of Science),
- Expanding the consultation for students or developing e-learning and creating study supports (Faculty of Philosophy, Faculty of Social and Economic Studies, Faculty of Production Technologies and Management, Faculty of Health Studies, Faculty of Environment, Faculty of Education, Faculty of Science),
- Involving the tutors (students of the higher grades of study) in consultations with the students on subjects which have been unsuccessful in the long-term (Faculty of Science),
- Developing the consultancy for students, providing the consultancy services provided by the Psychology Consultancy Centre of the Faculty of Education (Faculty of Philosophy, Faculty of Social and Economic Studies, Faculty of Arts and Design, Faculty of Production Technologies and Management, Faculty of Health Studies, Faculty of Environment, Faculty of Education, Faculty of Science),
- Developing the consultancy for applicants and specific needs, considering the specific needs of the applicants and students in the entrance examinations and study checks (in cooperation with the University centre for support of students with specific educational needs).

Selected measures were implemented with the support of the ESF project:

- University centre for support of students with specific educational needs (University).

## 5. GRADUATES

### 5.a GRADUATES OF ACCREDITED STUDY PROGRAMMES (from 1 January 2014 to 31 December 2014) (Table 5.1)

Total for the University

Groups of Study Programmes	Students in the Study Programme								Total
	Bachelor		Master		Master extension		Doctoral		
	FT	C	FT	C	FT	C	FT	C	
Sciences and disciplines	134	34	-	-	52	2	-	-	222
Technical sciences and disciplines	40	19	-	-	16	14	3	2	94
Health, medical and pharmaceutical sciences and disciplines	106	-	-	-	-	-	-	-	106
Social sciences, studies and services	184	45	-	-	45	-	-	-	274
Economics	179	88	-	-	153	-	-	-	420
Pedagogy, teaching and social care	359	151	68	40	113	2	2	1	736
Sciences and disciplines on culture and the arts	58	-	-	-	54	-	-	3	115
<b>Total</b>	<b>1.060</b>	<b>337</b>	<b>68</b>	<b>40</b>	<b>433</b>	<b>18</b>	<b>5</b>	<b>6</b>	<b>1.967</b>

41% of the graduates of the University bachelor study programme enrolled for the follow-up master's degree study at the University.

By University faculty

University Faculty	Students in the Study Programme												Total
	Bachelor			Master			Master extension			Doctoral			
	FT	C	Total	FT	C	Total	FT	C	Total	FT	C	Total	
Faculty of Social and Economic Studies	218	124	342	-	-	-	153	-	153	-	-	-	495
Faculty of Arts and Design	58	-	58	-	-	-	54	-	54	-	3	3	115
Faculty of Production Technologies and Management	27	11	38	-	-	-	15	14	29	3	2	5	72
Faculty of Health Studies	106	-	106	-	-	-	-	-	-	-	-	-	106
Faculty of Environment	68	31	99	-	-	-	25	-	25	-	-	-	124
Faculty of Philosophy	99	9	108	-	-	-	48	2	50	-	-	-	158
Faculty of Education	405	151	556	68	40	108	110	-	110	2	1	3	777
Faculty of Science	79	11	90	-	-	-	28	2	30	-	-	-	120
Total	1,060	337	1,397	68	40	108	433	18	451	5	6	11	1,967

Trend in the number of graduates in 2010-2014

Number of Graduates in the year	Students in the Study Programme			Total
	Bachelor	Master/Master follow-up	Doctoral	
2010	1,386	615	4	<b>2,005</b>
2011	1,343	698	9	<b>2,050</b>
2012	1,446	714	8	<b>2,168</b>
2013	1,439	610	7	<b>2,056</b>
2014	1,397	559	11	<b>1,967</b>

Rigorous procedure graduates

Groups of Study Programmes	Faculties	Degree	Total
Sciences and disciplines	Faculty of Science	RNDr.	<b>1</b>
Social sciences, studies and services	Faculty of Philosophy	PhDr.	<b>2</b>
Pedagogy, teaching and social care	Faculty of Education	PhDr.	<b>1</b>
<b>Total</b>	<b>University</b>	RNDr., PhDr.	<b>4</b>

## 5.b CONTACT AND COOPERATION WITH GRADUATES

The contact with the graduates is provided by the University Graduates' and Friends' Club in Ústí nad Labem, which registered 250 graduates in 2014, by informal networks of graduates established at the individual faculties or departments. A specific contact platform comprises the scientific companies, the branches of which operate at some departments of the University and associate the University graduates by discipline (Union of Czech Mathematicians and Physicists, Czech Society of Geography, etc.).

The specific cooperation with the graduates in 2014 mainly comprised the following activities:

- Using the graduates' networks for organising internships, residencies and field trips for students and for posting the topics for the students' graduation theses and opposing,
- Contacting the graduates with an offer of participation at technical conferences, seminars and workshops, including invited presentations (at the Faculty of Health Studies as a part of the Discipline Days),
- Involving the graduates as experts with practical experience in education and in creation of teaching models (at the Faculty of Social and Economic Studies through the project CEV - Centre of Practical Education in the Ústí nad Labem Region),
- Publishing the invitations to sports and cultural events of the University and faculties on the graduates' website,
- Organising gatherings with the graduates (Faculty of Production Technologies and Management),
- Periodical distributing of the electronic version of the University Bulletin to all members of the club - there were 7 issues of the bulletin providing the current information about the University distributed in 2014.

## 5.c EMPLOYMENT AND EMPLOYABILITY OF GRADUATES

The University monitored unemployment of its graduates using the portal of the Ministry of Labour and Social Affairs of the Czech Republic where the unemployment statistics from the Labour Department are published as of 30 April and 30 September

Unemployed graduates (as of 30 4 and 30 September 2014)

University Faculty	Unemployed Graduates by Study Programme						Total in Czech Republic		of which in the Ústí nad Labem Region	
	Bachelor		Master/Master follow-up		Doctoral					
	30/04	30/09	30/04	30/09	30/04	30/09	30/04	30/09	3004	3009
Faculty of Social and Economic Studies	22	22	15	35	-	-	37	57	27	49
Faculty of Arts and Design	1	4	3	10	-	-	4	14	-	2
Faculty of Production Technologies and Management	2	3	-	4	-	-	2	7	2	5
Faculty of Health Studies	5	7	-	-	-	-	5	7	2	4
Faculty of Environment	6	7	5	10	-	-	11	17	6	9
Faculty of Philosophy	13	13	3	7	-	-	16	20	11	8
Faculty of Education	35	53	8	11	-	-	43	64	31	40
Faculty of Science	10	8	2	2	1	-	13	10	10	4
Total	94	117	36	79	1	-	131	196	89	121

The University supported the competitiveness of its graduates - by organising internships and residencies, it provided professional experience, was particular about innovating the study programmes according to the future employers' needs and about innovations providing a shift from mediation of knowledge to a greater emphasis on socialisation of the graduates, on their personality growth, communication skills or ability to cooperate. To support entry of the graduates to the labour market, two faculties (Faculty of Production Technologies and Management, Faculty of Science) organised the Career Days.

Good results of the University in this area were also confirmed by the Reflex 2013 project implemented with the support of the Ministry of Education, Youth and Sports, the results of which were published in 2014. According to the results published, the University graduates have only minimal problems with transition to employment. The official education achieved is taken into account the most by the employers in the area of education (almost a half of the University graduates) and in the public services. To the contrary, the actual skills and abilities are taken into account the most by the employers in areas of information and communication, banking and insurance business. With respect to the lower level of the citizens with tertiary education in the Ústí nad Labem Region, the graduates of these disciplines of the University have not had a major problem with employment. The deficit of the specialists with technical tertiary education is still significant, and the region is still very interested in such professions.

## 5.d COOPERATION WITH FUTURE EMPLOYERS

Cooperation with future employers was developed through the partner networks which enabled the internships to be held, provided suggestions for topics of the bachelor or diploma theses, provided feedback and correlation of the study plans with the needs of the industry and suggested innovations of the study programmes and disciplines. In 2014, such partner networks included the Employment Pact of the Ústí nad Labem Region, Human Resources Development Council of the Ústí nad Labem Region, Industrial Council of the Faculty of Production Technologies and management, network of faculty schools and other educational facilities (partners of the Faculty of Philosophy, Faculty of Education, Faculty of Science), Spolchemie, a. s., Mondi coating Štětí (Faculty of Social and Economic Studies), Krajská zdravotní, a. s., Medical Institute based in Ústí nad Labem and other contractual medical facilities (partners of the Faculty of Health Studies), monument preservation institutes, archival and museum institutes (partners of the Faculty of Philosophy), and others. The Faculty of Production Technologies and Management and the Faculty of Science hold the Career Days on an annual basis, focused on employability of the graduates of the technical and science disciplines by presentations of the cooperating and other companies. The study is further interconnected with the production sphere in a number of activities, such as the students' internship, field trips where the graduates are assumed to be employed once they complete their studies. The University opened a website where it publishes the current vacancies of the employers, thus enhancing the employability of the students, future graduates. This website was also interconnected with the websites of the individual faculties.

The specific forms of cooperation with the future employers in the individual University faculties:

- Cooperation under the Memorandum of Cooperation of the University in Ústí nad Labem, the Ústí nad Labem Region and Krajská zdravotní, a. s. (Faculty of Health Studies),
- Establishment and activity of the clinics in the Masaryk Hospital in Ústí nad Labem, Krajská zdravotní, a. s.: Clinic of urology and robotic surgery, Clinic of gynaecology and midwifery, Clinic of trauma surgery, Ophthalmic clinic and Children's clinic,
- Establishment and functioning of the platform for accelerating the network of relationships and relations between the regional development research and application sphere (VYCERRO),
- In cooperation with CzechInvest and Grafton, expanding of the directory of companies on the website of the career consultancy for the University students and graduates.
- Cooperation on innovation of study programmes (Faculty of Production Technologies and Management, VYCERRO),
- Contractual cooperation with the National Heritage Institute - regional department, Ústí nad Labem, Liberec, Locket, Archive of the Capital City of Prague, Museum of the City of Ústí nad Labem, Terežín Monument, Czech Republic - State Regional Archive in Litoměřice (Faculty of Philosophy).

Cooperation is also active under projects (selection):

- CEV - Centre of Practical Economic Education in the Ústí nad Labem Region (Faculty of Social and Economic Studies),
- PARNET – partner network (Faculty of Science),
- MEVAPOX - interdisciplinary relations in science and technical disciplines of the University (Faculty of Science, Faculty of Environment, Faculty of Production Technologies and Management),
- Touch-screen devices in education (Faculty of Science),
- ENVIMOD - modernisation of education of technical and scientific disciplines at the University with focus on the environmental protection (Faculty of Environment, Faculty of Science),
- InWest - transfer of IT knowledge for the economic development of the Saxon-Czech borderland (Faculty of Science),
- INPOK - innovation potential as a factor of improvement of competitiveness of the Czech-Saxon borderland (Faculty of Science),
- Reconstruction of the study of kinanthropology disciplines with respect to competitiveness of the graduates (Faculty of Education),
- Innovation of education of the study programmes of the regional development with respect to the needs of the labour market (VYCERRO),
- Communitas pro praxis (Faculty of Philosophy).

## 6. INTEREST IN THE STUDY

### 6.a INTEREST IN THE STUDY (Table 6.1)

#### Faculty of Social and Economic Studies

Groups of Study Programmes	Bachelor's Degree Study			Master's Degree Study			Master's Degree Follow-up Study			Doctoral Study		
	Applied	Accepted	Enrolled	Applied	Accepted	Enrolled	Applied	Accepted	Enrolled	Applied	Accepted	Enrolled
Social sciences, studies and services	390	205	143	-	-	-	-	-	-	-	-	-
Economics	964	513	383	-	-	-	267	161	138	-	-	-
<b>Total</b>	<b>1,354</b>	<b>686</b>	<b>526</b>	<b>-</b>	<b>-</b>	<b>-</b>	<b>267</b>	<b>161</b>	<b>138</b>	<b>-</b>	<b>-</b>	<b>-</b>

#### Faculty of Arts and Design

Groups of Study Programmes	Bachelor's Degree Study			Master's Degree Study			Master's Degree Follow-up Study			Doctoral Study		
	Applied	Accepted	Enrolled	Applied	Accepted	Enrolled	Applied	Accepted	Enrolled	Applied	Accepted	Enrolled
Sciences and disciplines on culture and arts	273	79	71	-	-	-	135	79	69	19	8	8
<b>Total</b>	<b>273</b>	<b>79</b>	<b>71</b>	<b>-</b>	<b>-</b>	<b>-</b>	<b>135</b>	<b>79</b>	<b>69</b>	<b>19</b>	<b>8</b>	<b>8</b>

#### Faculty of Production Technologies and Management

Groups of Study Programmes	Bachelor's Degree Study			Master's Degree Study			Master's Degree Follow-up Study			Doctoral Study		
	Applied	Accepted	Enrolled	Applied	Accepted	Enrolled	Applied	Accepted	Enrolled	Applied	Accepted	Enrolled
Technical sciences and disciplines	490	420	356	-	-	-	52	41	38	10	7	7
<b>Total</b>	<b>490</b>	<b>420</b>	<b>356</b>	<b>-</b>	<b>-</b>	<b>-</b>	<b>52</b>	<b>41</b>	<b>38</b>	<b>10</b>	<b>7</b>	<b>7</b>

#### Faculty of Health Studies

Groups of Study Programmes	Bachelor's Degree Study			Master's Degree Study			Master's Degree Follow-up Study			Doctoral Study		
	Applied	Accepted	Enrolled	Applied	Accepted	Enrolled	Applied	Accepted	Enrolled	Applied	Accepted	Enrolled
Health, medical and pharmaceutical sciences and disciplines	771	278	217	-	-	-	-	-	-	-	-	-
<b>Total</b>	<b>771</b>	<b>278</b>	<b>217</b>	<b>-</b>	<b>-</b>	<b>-</b>	<b>-</b>	<b>-</b>	<b>-</b>	<b>-</b>	<b>-</b>	<b>-</b>

#### Faculty of Environment

Groups of Study Programmes	Bachelor's Degree Study			Master's Degree Study			Master's Degree Follow-up Study			Doctoral Study		
	Applied	Accepted	Enrolled	Applied	Accepted	Enrolled	Applied	Accepted	Enrolled	Applied	Accepted	Enrolled
Sciences and disciplines	367	287	214	-	-	-	152	104	99	4	3	3
<b>Total</b>	<b>367</b>	<b>287</b>	<b>214</b>	<b>-</b>	<b>-</b>	<b>-</b>	<b>152</b>	<b>104</b>	<b>99</b>	<b>4</b>	<b>3</b>	<b>3</b>

#### Faculty of Philosophy

Groups of Study Programmes	Bachelor's Degree Study			Master's Degree Study			Master's Degree Follow-up Study			Doctoral Study		
	Applied	Accepted	Enrolled	Applied	Accepted	Enrolled	Applied	Accepted	Enrolled	Applied	Accepted	Enrolled
Social sciences, studies and services	648	378	309	-	-	-	192	111	93	10	9	8
Pedagogy, teaching and social care	-	-	-	-	-	-	38	22	17	-	-	-
<b>Total</b>	<b>648</b>	<b>378</b>	<b>309</b>	<b>-</b>	<b>-</b>	<b>-</b>	<b>230</b>	<b>130</b>	<b>109</b>	<b>10</b>	<b>9</b>	<b>8</b>



#### Faculty of Education

Groups of Study Programmes	Bachelor's Degree Study			Master's Degree Study			Master's Degree Follow-up Study			Doctoral Study		
	Applied	Accepted	Enrolled	Applied	Accepted	Enrolled	Applied	Accepted	Enrolled	Applied	Accepted	Enrolled
Social sciences, studies and services	199	94	62	-	-	-	-	-	-	-	-	-
Pedagogy, teaching and social care	1847	876	700	280	148	110	460	241	211	20	17	17
<b>Total</b>	<b>2,046</b>	<b>955</b>	<b>761</b>	<b>280</b>	<b>148</b>	<b>110</b>	<b>460</b>	<b>241</b>	<b>211</b>	<b>20</b>	<b>17</b>	<b>17</b>

#### Faculty of Science

Groups of Study Programmes	Bachelor's Degree Study			Master's Degree Study			Master's Degree Follow-up Study			Doctoral Study		
	Applied	Accepted	Enrolled	Applied	Accepted	Enrolled	Applied	Accepted	Enrolled	Applied	Accepted	Enrolled
Sciences and disciplines	1,000	595	433	-	-	-	148	63	53	2	2	2
Technical sciences and disciplines	-	-	-	-	-	-	9	5	5	6	4	3
<b>Total</b>	<b>1,000</b>	<b>595</b>	<b>433</b>	<b>-</b>	<b>-</b>	<b>-</b>	<b>157</b>	<b>68</b>	<b>58</b>	<b>8</b>	<b>6</b>	<b>5</b>

#### By University faculty

University Faculty	Bachelor's Degree Study		Master's Degree Study			Master's Degree Follow-up Study			Doctoral Study			
	Applied	Accepted	Enrolled	Applied	Accepted	Enrolled	Applied	Accepted	Enrolled	Applied	Accepted	Enrolled
Faculty of Social and Economic Studies	1,354	686	526	-	-	-	267	161	138	-	-	-
Faculty of Arts and Design	273	79	71	-	-	-	135	79	69	19	8	8
Faculty of Production Technologies and Management	490	420	356	-	-	-	52	41	38	10	7	7
Faculty of Health Studies	771	278	217	-	-	-	-	-	-	-	-	-
Faculty of Environment	367	287	214	-	-	-	152	104	99	4	3	3
Faculty of Philosophy	648	378	309	-	-	-	230	130	109	10	9	8
Faculty of Education	2,046	955	761	280	148	110	460	241	211	20	17	17
Faculty of Science	1,000	595	433	-	-	-	157	68	58	8	6	5
Total	6,949	3,482	2,865	280	148	110	1,453	813	716	71	50	48

#### Total for the University

University Faculty	Applied	Accepted	Enrolled
Faculty of Social and Economic Studies	1,621	847	664
Faculty of Arts and Design	427	166	148
Faculty of Production Technologies and Management	552	468	401
Faculty of Health Studies	771	278	217
Faculty of Environment	523	394	316
Faculty of Philosophy	888	516	426
Faculty of Education	2,806	1,322	1,097
Faculty of Science	1,165	669	496
<b>University</b>	<b>8,753</b>	<b>4,434</b>	<b>3,735</b>

#### Admission Procedure Development in 2010-2014

Admission Procedures in the Year	Applied	Accepted	Enrolled
2010	12,033	5,516	4,512
2011	11,743	5,818	4,206
2012	10,665	5,305	4,189
2013	10,172	4,896	4,089
2014	8,753	4,434	3,735

### 6.b ENTRANCE EXAMINATIONS

The entrance examinations formed a part of the admission procedure at six faculties of the University (Faculty of Social and Economic Studies, Faculty of Arts and Design, Faculty of Health Studies, Faculty of Philosophy, Faculty of Education, Faculty of Science). They were conducted mostly from own resources in the form of discipline tests, complemented with a practical (talent) entrance test in selected disciplines at four faculties (Faculty of Arts and Design, Faculty of Health Studies, Faculty of Education, Faculty of Science). In the case of the discipline tests, if the applicant was applying for multiple disciplines with identical entrance examinations, it was sufficient to conduct it only once and the results were allocated to all relevant applications of the applicant.

The Faculty of Education and the Faculty of Social and Economic Studies used an external contractor (SCIO), however, only selectively for disciplines with an excessive number of applicants. In this case, the entrance examination comprised the general learning propensity test (basic version).

### 6.c STUDENTS OF MASTER'S DEGREE FOLLOW-UP AND DOCTORAL STUDY - GRADUATES OF OTHER UNIVERSITIES (Table 6.2)

	% of the total number enrolled for the first year in 2014	
	Master's Degree Follow-up Study	Doctoral Study
Faculty of Social and Economic Studies	8	-
Faculty of Arts and Design	38	63
Faculty of Production Technologies and Management	32	0
Faculty of Health Studies	-	-
Faculty of Environment	9	33
Faculty of Philosophy	27	13
Faculty of Education	19	65
Faculty of Science	22	80
<b>Average for the University</b>	<b>19</b>	<b>46</b>

## 6.d COOPERATION WITH SECONDARY SCHOOLS

A significant instrument of communication with secondary schools was the printed "Special Edition" of the University Bulletin containing information about the study opportunities at the University. This "Special Edition" was distributed by the University also at the Gaudeamus tertiary education fair in Prague and at the Welcome Days at the University in Ústí nad Labem and in the detached department of the Faculty of Environment in Most. In order to address the applicants, the University also posted leaflets in urban mass transportation, published advertisement in newspapers, used the promotion campaign on the traditional servers KamPoMaturitě.cz, KamNaVejšku.cz (Faculty of Science), short spots (Faculty of Environment), letters with offer of study (Faculty of Health Studies) or permanent installation of promotion panels in secondary schools upon agreement. On the University website, the information was concentrated in the Applicants section. The Welcome Days leaflet was distributed to the selected secondary schools in the Ústí nad Labem, North Bohemia, Karlovy Vary and Liberec Regions.

Popularisation of science and arts became an intensive form of cooperation with the secondary schools. The following activities were performed (selection):

- University Days of Science and Arts - this event in 2014 included the third year of the promotional event Faculty of Education Fest (schools on the street), focused on popularisation of the regional education right in the public areas of the city, and the "Science plays in the yard" held by the Faculty of Science and focused on popularisation of science,
- Teen Age University at the University - an activity drafted as a series of popularisation programmes designated for secondary school students, including the summer schools of chemistry, physics, mathematics, technology, history, music and visual arts (Faculty of Philosophy, Faculty of Production Technologies and Management, Faculty of Education, Faculty of Science), and the Discipline Days at the faculties (Faculty of Health Studies, Faculty of Science),
- Café Nobel - a series of popular instructive lectures, for the secondary school students, called Café Nobel, caffeine-free, in 2014 held in Ústí nad Labem and Teplice,
- Activities of the Centre of Practical Economic Education in the Ústí nad Labem Region - economic education of the secondary school students in the Ústí nad Labem Region (Faculty of Social and Economic Studies),
- Trips to the secondary schools, mainly in the Ústí nad Labem, Karlovy Vary and Liberec Regions - presentation of the study options at the University faculties, specialised lectures, series of lectures and seminars (Faculty of Arts and Design, Faculty of Production Technologies and Management, Faculty of Health Studies, Faculty of Environment, Faculty of Philosophy, Faculty of Science),
- Educational and motivation programmes for the secondary school students at the faculties - in 2014 "One day of a university student" (Faculty of Social and Economic Studies), economic competition "Prove your knowledge of an economist" (Faculty of Social and Economic Studies), "Week of Geography" (Faculty of Science), "Earth Day" (Faculty of Science), and others,
- Guiding of the students' theses at secondary schools (Faculty of Science),
- Distribution of specialized periodicals to the selected secondary schools - distribution of the Engineering Technology periodical (Faculty of Production Technologies and Management),
- Holding of the regional round of the History Olympiad for the Czech grammar schools (Faculty of Philosophy).

Direct contact of the University with the secondary school students was conducted directly by or with the support of the ESF project:

- Inclusive university, inclusive science (Faculty of Philosophy, Faculty of Production Technologies and Management, Faculty of Health Studies, Faculty of Education, Faculty of Science),
- By partnership to improve quality of human resources preparation for science and technical education (Faculty of Production Technologies and Management, Faculty of Education, Faculty of Science),
- Science for life, life for science (Faculty of Production Technologies and Management),
- Centre of Practical Economic Education in the Ústí nad Labem Region (Faculty of Social and Economic Studies).

## 7. ACADEMIC PERSONNEL

### 7.a NUMBERS OF EMPLOYEES (Table 7.1)

Academic, research and non-academic personnel as of 31 December 2014

Category	Number	Faculty of Social and Economic Studies	Faculty of Arts and Design	Faculty of Production Technologies and Management	Faculty of Health Studies	Faculty of Environment	Faculty of Philosophy	Faculty of Education	Faculty of Science	VYCERO	IT Centre	REC	SKM	VK	University
<b>Academic Personnel</b>															
Professors	E	1	6	8	2	5	5	8	10	0	0	2	0	0	47
	P	0.8	5.5	4.25	1.2	3.1	3	6.5	7.74	0	0	2	0	0	34.09
Associate professors	E	13	15	7	5	11	16	23	24	0	0	2	0	0	116
	P	8.6	15	4.98	3.23	6.7	13.4	22.8	15.8	0	0	2	0	0	92.51
Assistant professors	E	41	31	31	25	37	42	81	46	0	0	1	0	0	335
	P	35.3	30	22.35	18.65	25.05	31.15	72.3	30.15	0	0	1	0	0	267.95
Assistants	E	1	0	1	0	3	2	0	2	0	0	0	0	0	9
	P	1.5	0	0.6	0	2.1	1.8	0	4.2	0	0	0	0	0	10.2
Lecturers	E	0	1	0	2	0	3	10	7	0	0	0	0	0	23
	P	0	1	0	2	0	2.3	8	6.02	0	0	0	0	0	19.32
Researchers	E	1	3	3	0	8	3	0	18	0	0	2	0	0	38
	P	0.3	1.75	4.97	0	10.2	2.46	0	15.59	0.5	0	2.5	0	0	38.27
Total	E	57	56	50	34	64	71	122	107	0	0	7	0	0	568
	P	46.5	53.25	37.15	25.08	47.15	54.11	111.6	79.5	0.5	0	7.5	0	0	462.34
<b>Non-Academic Personnel</b>															
	E	25	27	17	10	23	36	59	38	1	19	108	34	20	417
	P	24.6	25.5	16.42	9.35	22.8	29.9	57.35	35.05	0.8	19.2	100.94	33	19.91	394.32
<b>Total academic and non-academic personnel</b>															
	E	82	83	67	34	87	107	181	145	1	19	115	34	20	985
	P	71.1	78.25	53.57	34.43	69.95	84.01	168.95	114.55	1.3	19.2	108.44	33	19.91	856.66

Note: E – headcounts, P – converted number, SKM – student hostel and cafeteria administration, REC – Rector's office, CI – IT Centre, VK – University scientific library

### 7.b QUALIFICATION AND AGE STRUCTURE OF THE ACADEMIC AND RESEARCH PERSONNEL (Table 7.2)

Qualification and age structure of the academic and research personnel

Age	Academic Personnel										Research Personnel		Total
	Professors		Associate professors		Assistant professors		Assistants		Lecturers				
	Total	Women	Total	Women	Total	Women	Total	Women	Total	Women	Total	Women	
Up to 29 years	0	0	0	0	4	2	4	2	3	1	9	3	20
30-39 years	0	0	7	0	126	45	3	0	8	6	15	5	160
40-49 years	4	0	22	11	103	46	0	0	8	4	5	0	142
50-59 years	11	1	28	12	67	30	1	0	1	0	4	1	112
60-69 years	10	1	41	6	26	8	1	0	3	3	3	0	87
Over 70 years	22	5	18	2	6	2	0	0	0	0	1	0	47
Total	47	7	116	31	335	133	9	2	23	14	38	9	568

## 7.c NUMBERS OF ACADEMIC PERSONNEL BY WORKING TIME (Table 7.3)

### Faculty of Social and Economic Studies

Working time	prof.	doc.	DrSc., CSc., Dr., Ph.D., Th.D	Others	Total
Up to 0.3	0	2	1	3	6
Up to 0.5	1	4	2	6	13
Up to 0.7	0	3	0	1	4
Up to 1.0	0	4	19	11	34
Over 1.0	0	0	1	1	2

### Faculty of Arts and Design

Working time	prof.	doc.	DrSc., CSc., Dr., Ph.D., Th.D	Others	Total
Up to 0.5	0	1	3	9	13
Up to 0.7	1	0	0	0	1
Up to 1.0	3	8	8	24	43
Over 1.0	0	1	0	2	3

### Faculty of Production Technologies and Management

Working time	prof.	doc.	DrSc., CSc., Dr., Ph.D., Th.D	Others	Total
Up to 0.3	3	0	2	6	11
Up to 0.5	2	0	2	3	7
Up to 0.7	1	1	0	4	6
Up to 1.0	1	5	8	6	20
Over 1.0	1	2	2	3	8

### Faculty of Health Studies

Working time	prof.	doc.	DrSc., CSc., Dr., Ph.D., Th.D	Others	Total
Up to 0.3	0	1	4	4	9
Up to 0.5	1	2	1	1	6
Up to 0.7	1	0	0	0	1
Up to 1.0	0	2	6	11	19
Over 1.0	0	0	0	1	1

### Faculty of Environment

Working time	prof.	doc.	DrSc., CSc., Dr., Ph.D., Th.D	Others	Total
Up to 0.3	3	5	4	8	20
Up to 0.5	0	0	1	4	5
Up to 0.7	1	1	4	3	9
Up to 1.0	1	4	9	6	20
Over 1.0	1	2	6	4	13

### Faculty of Philosophy

Working time	prof.	doc.	DrSc., CSc., Dr., Ph.D., Th.D	Others	Total
Up to 0.3	2	2	1	7	22
Up to 0.5	1	4	8	4	19
Up to 0.7	0	0	3	1	8
Up to 1.0	2	8	19	7	52
Over 1.0	0	3	1	0	7

#### Faculty of Education

Working time	prof.	doc.	DrSc., CSc., Dr., Ph.D., Th.D	Others	Total
Up to 0.3	0	0	0	1	1
Up to 0.5	2	1	9	13	25
Up to 0.7	0	0	0	1	1
Up to 1.0	5	20	44	22	91
Over 1.0	0	1	3	1	5

#### Faculty of Science

Working time	prof.	doc.	DrSc., CSc., Dr., Ph.D., Th.D	Others	Total
Up to 0.3	1	4	11	6	22
Up to 0.5	1	8	4	6	19
Up to 0.7	2	3	1	2	8
Up to 1.0	5	10	27	10	52
Over 1.0	1	2	4	0	7

#### VYCERRO

Working time	prof.	doc.	DrSc., CSc., Dr., Ph.D., Th.D	Others	Total
Up to 0.5	0	0	0	1	1

#### Total for the University

Working time	prof.	doc.	DrSc., CSc., Dr., Ph.D., Th.D	Others	Total
Up to 0.3	9	14	23	36	82
Up to 0.5	8	20	30	48	106
Up to 0.7	6	8	8	12	34
Up to 1.0	17	61	140	98	316
Over 1.0	5	12	18	13	48

### 7.d NUMBER OF ACADEMIC PERSONNEL - FOREIGN NATIONALS

(Table 7.4)

#### Academic personnel - foreign nationals

Section	Number of physical personnel
Faculty of Social and Economic Studies	6
Faculty of Arts and Design	2
Faculty of Production Technologies and Management	5
Faculty of Health Studies	2
Faculty of Environment	2
Faculty of Philosophy	3
Faculty of Education	7
Faculty of Science	9
<b>Total for the University</b>	<b>36</b>

## 7.e ASSOCIATE PROFESSORS AND PROFESSORS APPOINTED IN 2014 (Table 7.5)

Newly appointed associate professors and professors

Section	Number	Average age of the newly appointed
<b>Faculty of Arts and Design</b>		
Associate professors	2	49.5
<b>Faculty of Production Technologies and Management</b>		
Associate professors	2	40.5
<b>Faculty of Philosophy</b>		
Associate professors	1	56
<b>Faculty of Science</b>		
Professors	1	51
Associate professors	1	40
<b>University</b>		
<b>Professors</b>	<b>1</b>	<b>51</b>
<b>Associate professors</b>	<b>6</b>	<b>46.5</b>

## 7.f FURTHER EDUCATION COURSES (Table 7.6)

	Courses	Participants
Courses oriented on educational skills	33	140
Courses oriented on general skills	31	188
Specialized courses	41	112
<b>Total</b>	<b>105</b>	<b>440</b>

## 7.g CAREER SYSTEM, MOTIVATION INSTRUMENTS FOR EMPLOYEE REMUNERATION

The Career System has not been established at the level of the University, only the Faculty of Production Technologies and Management has a functional and approved Career System. Besides the internal Wage Regulation, the University remunerates the academic personnel also in line with the Rector's Order of Stimulation of Scientific, Research, Development and Artistic Activity at the University in 2014.

### 7.g.a MOTIVATION TOOLS

#### Faculty of Social and

##### Economic Studies

The Dean's Instruction No. 3/2014 - Principles for determining the scope of educational duty of assistant professors at the Faculty of Social and Economic Studies of the University was issued in 2014. One of the intended effects of this Order is stimulation to the required publication.

##### Faculty of Arts and Design

The faculty obeyed the Dean's Directive No. 2/2010 - Support of creative and educational activity of the academic personnel of the Faculty of Arts and Design of the University (in particular, Article 2 Support of qualification growth of academic personnel).

##### Faculty of Production Technologies and Management

The Career System of the faculty is stipulated in the Dean's Directive No. 10/2012. Other motivation instruments of the faculty include the remuneration paid for performance of the contractual research tasks in the science and technology park, remuneration for project implementation and other instruments stipulated in the Dean's Directive No. 2/2012 - Stimulation of scientific, research and creative activity at the Faculty of Production Technologies and Management of the University. A new amount of the personnel's merit pay is determined on an annual basis based on the performance evaluation of the departments and the science and technology park. The academic personnel are motivated to publish by a one-time remuneration determined based on the publication outcome registered in RIV.

### **Faculty of Health Studies**

The faculty obeyed the Dean's Directive No. 12/2013 - Support of scientific, research and innovative activity of academic personnel and qualification growth stimulation and the Dean's Directive No. 3/2014 - Evaluation of academic personnel, departments and laboratories, defining the criteria for evaluation of academic personnel including the educational, research and development activity.

### **Faculty of Environment**

The plans of qualification growth and perspectives of the staffing of education including provision of the subject sponsors and discipline sponsors are managed by the department heads in coordination with the Dean of the faculty. One motivation instrument of the faculty is the Dean's Directive No. 10/2014 - Stimulation of scientific, research and development activity at the Faculty of Environment of the University.

### **Faculty of Philosophy**

The faculty applies the Dean's Directive No. 20/2011 - Stimulation of scientific research activity of academic personnel at the Faculty of Philosophy of the University which supports the research and development activities of the academic personnel. It is used by the individual departments to monitor the qualification growth on an annual basis.

### **Faculty of Education**

The faculty has established and applies the internal rules to motivate its academic personnel to further professional research and educational growth. In addition to the Internal Wage Regulation, the University mainly applied the Dean's Directive No. 1A/2011 - Stimulation of qualification growth of academic personnel at the Faculty of Education of the University, Dean's Directive No. 2/2013 - Support of internal research grants of the departments of the Faculty of Education of the University and the Dean's Directive No. 8/2013 - Stimulation system for doctoral study, habilitation and professor appointment procedures. The Dean's Directive No. 1/2014 - Criteria for annual evaluation of the academic personnel at the Faculty of Education of the University was newly issued in 2014. In 2014, the merit pay of the academic personnel was mainly designated for those who meet the conditions for the study programme (discipline) sponsors and for academic personnel with significant publication registered in RIV.

### **Faculty of Science**

The faculty has the qualification growth plan for each academic employee or researcher participating in education (at the department level) which is evaluated in connection with the hiring procedures on an annual basis. The personnel's motivation is given by the annual department evaluation of department with subsequent merit pay re-distribution based on the results of the department achieved and the Dean's Directive No. 1/2010 - Motivation system for stimulation of scientific, research and development activity at the Faculty of Science of the University.

## **7.g.b RECTOR'S AWARDS FOR EMPLOYEES**

On 10 December 2014, the Rector awarded 12 prizes to the University personnel for 2014 in the total

amount of CZK 235,000. The following personnel were awarded for the scientific and research activity:

- RNDr. Filip Moučka, Ph.D., Faculty of Science
- Dr. Ing. Pavel Kuráň, Ph.D., Faculty of Environment
- Mgr. Pavel Raška, Ph.D., Faculty of Science

The special Rector's award for the scientific and research activity went to:

- PhDr. RNDr. Jan Daniel Bláha, Ph.D., Faculty of Science
- Mgr. Tereza Pavlíčková, Ph.D., Faculty of Philosophy

The following personnel received the Rector's award for artistic activity:

- prof. PaedDr. Jiří Holubec, Ph.D., Faculty of Education
- doc. Mgr.A. Pavel Kopřiva, Ph.D., Faculty of Arts and Design
- Mgr. Anna Vartecká, Faculty of Arts and Design

The special Rector's award for the artistic activity went to:

- MgA. Richard Loskot, Faculty of Arts and Design

The Rector's award for the "Česko-saské vztahy v proměnách času" book went to:

- doc. PhDr. Kristina Kaiserová, CSc., Faculty of Philosophy



The special Rector's award for the "Stylistické transformace ruských substandardů nebo kniha o slengu" book went to:

- PhDr. Inna Kalita, Ph.D., Faculty of Education

and for the "Lola" book to:

- MgA. Martin Kuriš, Faculty of Arts and Design

The Rector's award for applied research was not granted in 2014.

## 8. SOCIAL MATTERS OF STUDENTS AND EMPLOYEES

### 8.a SCHOLARSHIP (Table 8.1)

Purpose of scholarship	Funds in thousand of CZK
for excellent academic achievement pursuant to Section 91(2)(a)	2,466
for excellent scientific, research, development, artistic or other creative outcome pursuant to Section 91(2)(b)	-
for research, development and innovative activity pursuant to the special statutory regulation, Section 91(2)(c)	2,172
in case of difficult social situation of the student pursuant to Section 91(2)(d)	494
in case of difficult social situation of the student pursuant to Section 91(3)	1,230
in case of particular consideration pursuant to Section 91(2)(e)	21,280
of which accommodation scholarship	21,280
for support of study abroad pursuant to Section 91(4)(a)	17,123
for support of study in the Czech Republic pursuant to Section 91(4)(b)	958
to the students in the doctoral study programmes pursuant to Section 91(4)(c)	6,666
Other scholarship	15,261
<b>TOTAL</b>	<b>88,930</b>

### 8.b Scholarship programmes

The excellent students were supported by the merit and extraordinary scholarship, including but not limited to, the scholarship allocated under the Rector's Awards or under student grants provided under the supervision of the Grant Board of the University.

The Rector awarded the following students for extraordinary achievement in research, development, artistic, innovative or other creative activity in 2014:

- Bc. Antonín Čajka, Faculty of Science
- Ivana Brožovská, Denisa Canincová, Eliška Pospíšilová, Zuzana Urbanová, Faculty of Health Studies
- Mgr. Jakub Ederer, Ing. Martin Šťastný, Faculty of Environment

The Rector's award for the best sports results in 2014 went to:

- Martina Mikulášková, Faculty of Health Studies
- Petra Chocová, Faculty of Education
- Edita Vopatová, Faculty of Education

The accommodation scholarship was provided by the University in three scholarship periods - January to March, April to June and July to December. The quarterly scholarship per student amounted to CZK 2,313 in the first scholarship period, CZK 2,470 in the second one, whereas the semi-annual scholarship amounted to CZK 5,049 in the third period. The financial funds were distributed to about 2,300-2,600 legitimate applicants in each period.

The study scholarship in case of difficult social situation of the student was paid to the students in need in the statutory amount of CZK 1,620 for ten months from October to July.

### 8.c CONSULTANCY SERVICES

In line with the University Long-Term Plan, several departments provided consultancy services at the University:

- University study department in the area of the study and admission procedure,
- Lifelong education department of the University in the area of lifelong education,
- University department for external relations in the area of career consultancy and foreign mobilities (residencies and internships),
- Psychological consultancy centre of the Faculty of Education in the area of psychological consultancy,
- University centre for support of students with specific educational needs.

As a part of the career consultancy at the University, the "Career Consultancy" website was created in 2014 where the new vacancies and practical information focused on the future career of the University students were posted on a regular basis. Placement of the career consultancy logo on the website of all faculties interconnected the website with all of the three faculties. The Facebook profile of the Career Consultancy was also updated on a regular basis and the database of companies cooperating with the University was expanded. The major events included the Career Day of the Faculty of Production Technologies and Management, Career Day of the Faculty of Science and the Career Counselling Day held in cooperation with ING and TU Chemnitz where the students received the basic information about possible careers in Germany.

#### **8.d STUDENTS WITH SPECIFIC NEEDS**

The barrier-free entrance is to be provided in the main building in the České mládeže facility with the principal site of the Faculty of Education and Faculty of Science where the computer stations have also been established with barrier-free access. Barrier-free access was also provided in the building of the Faculty of Social and Economic Studies on Moskevská street, facilities of the Faculty of Social and Economic Studies in "D" building (former VIKS) in the campus, building of the Faculty of Arts and Design, laboratory and workshop complex of the Faculty of Production on Za Válcovnou street, "H" building in the campus and the building of the Faculty Technologies and Management at Na Okraji. The barrier-free access is also provided in all of the new buildings in the campus - in the multi-functional information and education centre with the Rector's office and assembly halls, in the building with the University scientific library, University book store and Literary café and in the newly reconstructed building of the Faculty of Philosophy where hydraulic elevators and sanitary facilities for disabled people are also available.

Socially disadvantaged students are supported by the social scholarship paid pursuant to Section 91(3) of the Act, as well as by the extraordinary social scholarship allocated pursuant to Section 91(2)(b) of the Act. The difficult social situation is also considered when evaluating the requests for review of the decision on assessment of the fee for studies. Socially disadvantaged students may apply for the "extraordinary scholarship".

In order to support complex management of the organisation and conditions of study of the students with specific needs, the University implemented the ESF project "University Centre of Support for Students with Specific Educational Needs" in 2012 which is participated by all faculties. Under the above-mentioned project, construction works were launched in other University buildings, as well, also outside the campus (building of the Faculty of Health Studies, Velká Hradební 13 - elevator installation).

#### **8.e EXTREMELY TALENTED STUDENTS**

Talented students were supported from the student grants under the supervision of the University Grant Board in 2014. The student grant projects are worked on by the academic personnel along with the students of the master's degree or doctoral study programmes. This supports the motivation environment for the masters' and doctorands' projects, further solution of which can carry over to the national or international grant boards.

The extremely talented students were also supported by:

- granted Rector's awards,
- granted Dean's awards (Faculty of Arts and Design, Faculty of Health Studies, Faculty of Production Technologies and Management),
- allocated extraordinary scholarship to the best students of the University,
- allocated merit and extraordinary scholarship to the best students of the faculty,
- allocated grants proposed by the faculty grant agencies (Faculty of Philosophy, Faculty of Arts and Design, Faculty of Education, Faculty of Science),
- involvement of students in work on research projects including the projects performed under the institutional research and other research activities of the departments (Faculty of Production Technologies and Management, Faculty of Philosophy, Faculty of Health Studies, Faculty of Environment, Faculty of Education, Faculty of Science),
- performance of internships abroad (Faculty of Arts and Design, Faculty of Education, Faculty of Science, Faculty of Environment),
- double degree (Faculty of Philosophy),
- organising of students' scientific conferences or competitions SVOČ (Faculty of Philosophy, Faculty of Health Studies, Faculty of Education, Faculty of Science),

- supporting participation of the SVOČ faculty round winners in nation-wide students' conferences (Faculty of Science),
- organising of the best foreign-language presentation in the discipline competition (Faculty of Social and Economic Studies),
- organising of the best final thesis in the discipline competition (Faculty of Health Studies),
- publishing of selected graduation theses (Faculty of Arts and Design, Faculty of Philosophy, Faculty of Science),
- holding regular exhibitions of the best students (Faculty of Arts and Design, Faculty of Education),
- applying the best theses for national competitions (Faculty of Environment, Philosophy, Faculty of Education, Faculty of Science),
- sending the students to conferences, workshops, discipline-oriented summer schools (Faculty of Philosophy, Faculty of Social and Economic Studies, Faculty of Environment, Faculty of Science),
- nominating for the "Good Certificate of the Chamber" (Faculty of Production Technologies and Management, Faculty of Science).

The extremely talented students of the Faculty of Science were successful at both national and international level. They received the Award of the Minister of Education, Youth and Sports (Bc. Čajka), 1st place at the Czech-Slovak students student scientific conference on physics (Bc. Čajka), award of the Czech Academy of Sciences in the FameLab 2014 competition (Bc. Braborec) and the jury award in the Merk Awards (Bc. Lupínková).

## 8.f ACCOMMODATION AND CATERING SERVICES (Table 8.2)

Care for students – accommodation, catering

<b>Total capacity of student hostels - beds</b>	1,405
Beds in leased facilities	0
Applications for accommodation filed as of 31 December 2014	1,057
Successful applications for accommodation filed as of 31 December 2014	975
Main courses served to students	10,035
Main courses served to employees	16,283
Main courses served to other boarders	2,586

## 8.g EMPLOYEE CARE

### Social Fund

The University established the Social Fund in 2006 in line with the Universities Act. The contribution to the fund in 2014 was 1% of the total annual amount of wages, payment of wages and bonuses for on-call duty. The Social Fund is used mainly as a contribution to the supplementary pension insurance and also as a contribution for holiday.

### Aids, Protective Equipment and Overalls

The employees are provided with the personal, protective, working, washing and cleaning aids for protection against the residual risks by the list of jobs and work activities.

### Medical Examinations

The University has contracted the preventive care. All employees undergo (by law) the preventive periodical medical examinations (always in 5-year intervals) at the employer's expenses.

### Specialised Training

The employees are trained on the occupational health and safety and fire protection. Employees undergo regular training on operation of and work on technical equipment and employee training related to the authorization to drive a university vehicle. The training is provided at the employer's expenses. The occupational health and safety and fire protection training was also provided to employees of other employers who performed works on constructions within the University campus and reconstruction of the other University buildings in Ústí nad Labem.

### Meal Allowance

The University provides its employees with a meal allowance up to 50% of the meal price a day.

**Apartments and Accommodation**

To stimulate its employees, the University helps conclude the municipal apartment lease agreements for a fixed term in cooperation with the statutory city of Ústí nad Labem.

**Recreational Facilities**

The employees have the opportunity to recreate for lower prices in the Bukovina university training centre that is located in the Český ráj micro-region near the town of Hrubá Skála.

**Extra Bonuses**

The employees receive an extra bonus upon 50th life anniversary, retirement and work anniversary (always after five years worked with the University).

## 9. INFRASTRUCTURE

### 9.a LIBRARY FUNDS (Table 9.1)

The University Scientific Library as a university-wide department was already in routine operation in 2014. This year, we celebrated the 60th anniversary of the university library in Ústí nad Labem.

There are more than 90,000 books on the shelves, more than 160,000 books in the depository. The library is open from Monday to Saturday, 61 hours a week. There were 38 hours of training held for the users with 1,529 participants, 62 retrievals completed, 8 readings by authors, lectures and discussions with writers, 21 exhibitions, and a sales exhibition of foreign books.

On 3 April 2014, the Austrian Library with 3,000 volumes was open in the premises of the University Scientific Library.

The academic personnel and the students were provided with access to the renowned electronic information resources (bibliographic, full-text) thanks to participation in the projects of the *Operational Programme Research and Development for Innovations*, 4.3 *Professional Scientific Library Equipment* and the programme of the Ministry of Education, Youth and Sports LR Information - Foundation of Research: Web of Science, Scopus, Academic Search Complete, Science Direct, Springer Link, Wiley Interscience, Proquest Central, JSTOR, Oxford Journals, Cambridge Journals, EnviroNetBase, IoPscience, Nursing @ Ovid, Environment complete, EconLit with full text, Literature Online, Literature resource center, Art Source, Business Source complete. The EBSCO Discovery Service tool was used for parallel searching in these sources. The library was promoting the sources, organizing training, providing individual consultations to users.

University libraries – as of 31 December 2014

Addition to the library stock for the year		12,012
Total library stock		323,337
Periodicals subscribed	- in a paper format	338
	- electronically*	2

\* Includes only the periodicals which the library itself subscribes (or receives as a gift, by exchange), not in the databases.

### 9.b INFORMATION AND COMMUNICATION SERVICES, INFORMATION INFRASTRUCTURE AVAILABILITY

The virtualisation requirements are increasing; this trend required the university-wide virtualisation system expansion with another disk array in 2014.

The university wireless network was expanded with 30 more access points. There are about 600 devices actively connected to the wireless network simultaneously on a normal business day.

The wireless and wire computer network, telephone network and access system were established in the newly reconstructed building of the Faculty of Philosophy. All technologies were fully integrated into the present networks and access system.

The STAG study information system mainly developed in the area of support of previous studies records, records of prior study period acknowledged, system in area of support of the students' arrivals from and travels to other universities, including the Erasmus+ programme electronic application.

The My Personal IMIS module was created in IMIS; it is designated for the employees and provides information kept in other systems, e.g. records of assets, records of vacation, work duties.

The video-conferencing equipment installed in the conference room of the IT Centre was purchased from the Institutional Plan funds for 2014.

The SafeQ system for the automatic print management was purchased at the end of the year; the system is currently being integrated in the study system and chip card registration system.

The IT Centre administers the university computer and telephone networks. It closely cooperates with Cesnet in order to ensure high quality of the networking services.

The external IT audit was conducted in the spring of 2014, measures were taken in the course of 2014 and more administrative measures are in the stage of preparation. The audit contained assessment of

compliance with ISO/IEC 27001 - i.e. not only in terms of the IT security, but also from the global perspective on information security. This assessment also included assessment of compliance with Act No. 101/2000 Coll. on personal data protection. Vulnerability of selected servers was tested using the Qualys tool. The test was conducted by an automated tool.

## 10. LIFELONG EDUCATION

### 10. a FURTHER EDUCATION COURSES (Table 10.1)

Number of lifelong education courses

Groups of lifelong education courses	Professional conduct oriented courses			Hobby courses			U3V	Total	Of which, number of courses whose participants were admitted for the study programme pursuant to Section 60 of the Act
	Up to 15 hours	Up to 100 hours	More	Up to 15 hours	Up to 100 hours	More			
Sciences and disciplines	-	1	-	-	-	-	1	2	-
Technical sciences and disciplines	1	10	-	3	-	-	7	21	-
Health, medical and pharmaceutical sciences and disciplines	-	1	3	1	1	-	6	12	-
Social sciences, studies and services	-	8	1	-	-	-	18	27	1
Economics	-	3	6	-	-	-	1	10	6
Pedagogy, teaching and social care	-	35	25	-	-	-	-	60	4
Sciences and disciplines on culture and arts	-	3	2	-	-	-	11	16	-
<b>Total</b>	<b>1</b>	<b>61</b>	<b>37</b>	<b>4</b>	<b>1</b>	<b>-</b>	<b>44</b>	<b>148</b>	<b>11</b>

### 10. b PARTICIPANTS OF LIFELONG EDUCATION COURSES (tab. 10.2)

Number of participants of the lifelong education courses

Groups of lifelong education courses	Professional conduct oriented courses			Hobby courses			U3V	Total	Of which, number of participants admitted for the study programme pursuant to Section 60 of the Act
	Up to 15 hours	Up to 100 hours	More	Up to 15 hours	Up to 100 hours	More			
Sciences and disciplines	-	-	-	-	-	-	73	73	-
Technical sciences and disciplines	16	-	-	8	-	-	96	120	-
Health, medical and pharmaceutical sciences and disciplines	-	-	15	40	14	-	160	229	-
Social sciences, studies and services	-	58	48	-	-	-	657	763	2
Economics	-	60	3	-	-	-	14	77	5
Pedagogy, teaching and social care	-	286	1,128	-	-	-	-	1,414	232
Sciences and disciplines on culture and arts	-	20	3	-	-	-	313	336	-
<b>Total</b>	<b>16</b>	<b>424</b>	<b>1,197</b>	<b>48</b>	<b>14</b>	<b>-</b>	<b>1,313</b>	<b>3,012</b>	<b>239</b>



## 10. c UNIVERSITY OF THE THIRD AGE

Summer semester of 2013/2014 - place of education Ústí nad Labem

Course name	Hours allocated	Participants
English conversation	24	14
English language advanced	24	10
English language - beginner	24	24
Bridge club	12	9
Readers' club	16	17
History of philosophy	12	12
History of art, interpretation and context	16	59
Digital photographs	24	20
Diploma seminar	12	14
French language advanced	24	9
French language - beginner	24	7
Genetics and society	12	21
Tourism geography	12	73
Graphical way for advanced	30	19
Impression	30	12
IT from the beginner to advanced user	24	9
How to understand music (or the little secrets of music)	16	55
Key issues of history in our countries in the 19th and in the 1st half of the 20th century	24	92
Health practice club	24	21
Landscape photography	15	12
Painting techniques	30	32
Multi-media	24	11
Our Ústí nad Labem Region	16	112
German language advanced	24	10
German language - beginner	24	14
Oil painting advanced	30	14
Practising club	24	17
Stories of history	16	46
Senior a psychologist to himself	12	58
World religions	12	82
Formation and transformation of the Czech society in the 19th and 20 century	16	22
Selected chapters of medicine	12	38
Practical application of information technology equipment	16	6
Information technology equipment for beginners	24	26
Elementary knowledge of tax laws and International finance	16	14
Grounding in graphology	16	72
Grounding in criminal science	12	39
Electricity and heat sources	16	10

Field trip name	Date	Participants
Prague - Botanical garden	24 April 2014	50
Germany – Neugersdorf, Görlitz, Mariathal	28 April 2014	39
Orlík hydraulic power plant and Temelín nuclear power plant	22 May 2014	36

Winter semester of 2014/2015 - place of education Ústí nad Labem

Course name	Hours allocated	Participants
English conversation	24	15
English language - advanced	24	8
English language - beginner	24	27
English language for beginners - new course	24	27
Bridge club	12	7
Readers' club	16	16
History of philosophy	12	8
History of art, interpretation and context	16	65
Digital photographs	24	22
Diploma seminar	12	18
French language - advanced	24	7
Genetics and society	12	18
Tourism geography	12	78
Graphical way for advanced	30	21
History of garden architecture	12	65
Impression	30	11
IT from the beginner to advanced user	24	10
How to understand music (or the little secrets of music)	16	58
Key issues of history in our countries in the 19th and in the 1st half of the 20th century	24	89
Health practice club	24	18
Landscape photography	15	10
Painting techniques	30	30
Multi-media	24	10
Our Ústí nad Labem Region	16	108
German language - advanced	24	11
German language - beginner	24	11
Oil painting advanced	30	13
Practising club	24	19
Stories of history	16	40
Senior a psychologist to himself	12	46
World religions	12	70
Formation and transformation of the Czech society in the 19th and 20 century	16	23
Introduction to social pathology	16	24
Selected chapters of medicine	12	45
Information technology equipment for beginners	24	20
IT for beginners - new course	24	14
Grounding in graphology	16	63
Grounding in criminal science	12	36
Electricity and heat sources	16	12

Winter semester of 2014/2015 - place of education Roudnice nad Labem

Course name	Hours allocated	Participants
History of antiquity and antique arts	16	19
Psychology	12	32

Field trip name	Date	Participants
Ledvice power plant and Chotějovice electrical substations	24 November 2014	14

## 11. RESEARCH, DEVELOPMENT, ARTISTIC AND OTHER CREATIVE ACTIVITIES

### 11.a FULFILMENT OF THE LONG-TERM PLAN OF THE MINISTRY OF EDUCATION, YOUTH AND SPORTS, THE LONG-TERM PLAN OF THE UNIVERSITY AND THEIR UPDATES

In its research, development, artistic and other creative activities, the University focuses on achievement of strategic objectives laid down in the long-term prospect (Long-Term Prospect for Educational, Scientific, Research, Development, Artistic and Other Creative Activity of the University for 2011-2015).

It develops profiling of a broader spectrum of disciplines in the range corresponding to the university structure with the departments of scientific, technical, environmental, health, social, economic, humanist, educational and artistic disciplines.

The plan of the University that was gradually fulfilled in 2014 is to identify and develop the core topics and build teams stabilised in the long term which will develop its activity in connection with the scientific, artistic and educational activity and strive for excellence at both national and international level. In these disciplines, the University also develops international cooperation with a major role of mobility of the researchers and intensifies cooperation with business in the Czech Republic.

In its research, development, artistic and other creative activities, the University attaches great importance to the specific needs of its region - the Ústí nad Labem Region. It exercises focused efforts to establish cooperation by cross-border contacts with the universities in Saxony (Germany) and in Poland.

In 2014, the University continued establishing the infrastructure for the scientific, development, artistic and other creative activity by major construction activities (construction of the multi-functional information and education centre where the University Scientific Library is located) or by purchasing equipment for selected departments.

### 11.b INTERCONNECTION OF CREATIVE AND EDUCATIONAL ACTIVITIES

The University attaches major importance to interconnection of educational activities and activities in the area of science and arts. For these purposes, it uses various tools:

- Aligning the diploma and dissertation theses with the profile areas of research, development, artistic and other creative activities,
- Formulating the topics of students' qualification theses in connection to the practical needs,
- Engaging the students (mainly the talented ones) of the master's degree and doctoral study programmes in the projects of the research, development and artistic activities,
- Using the knowledge and outcome of the research, development and artistic projects in education,
- Engaging the practitioners in management and consulting of the students' qualification works,
- Performing educational activities in departments with the state-of-the-art equipment.

The **Faculty of Social and Economic Studies** engaged its students in development of its own information system AMIS that supports the education and its organisation.

#### **Faculty of Production Technologies and Management**

The academic personnel of the faculty were engaged in research for industry through significant projects, e.g. increasing durability of mining machinery, reducing the dust level in transfer nodes, managing belt transport, company logistics, heat treatment, development of tyre pressing moulds and developing new materials. The companies involved were, for instance, Kovošvit MAS, Škoda Auto, Vršanská uhelná.

The academic personnel pass their knowledge from the research and consultancy for the industry to the new generation in lectures and tutorials.

The students of the bachelor's degree and the follow-up study are engaged in research and the students of the doctoral study relate their dissertation theses to industry.

The students of the **Faculty of Arts and Design** use the professionally equipped departments for their creative activities, such as the Electronic Image Centre (audiovisual studio, large-scale plotter), Photography Centre (photographic workshop, dark rooms), Material Processing Centre (glass grinding plant, glass furnaces), Spatial Work Centre (3D milling machine, workshops), Graphics and Print Centre (screening shop, graphical shops). The curatorship students perform their study tasks in close cooperation with various external galleries and the galleries managed by the Faculty of Arts and Design (Armaturka, Rampa, Billboart Gallery Europe). The students of the Faculty of Arts and Design assist in the events held by the Inkubátor Předlice design studio.

The students of the **Faculty of Health Studies** learn about the instruments for bio-mechanical analysis of movement in the Movement Studies Laboratory or about the instruments for monitoring and analysing the cardiovascular and respiratory system in the Chronic Diseases Studies Laboratory, including the use of a defibrillator. They also learn to analyse the body composition (active muscle mass, fat, water) and actively seek the cardiovascular load with individuals exposed to risk.

Under the ENVIMOD project, the **Faculty of Environment** organised several field trips of the students and teachers in the Czech Republic or abroad (Germany, Belgium) with a visit to the IFAT fair in Munich. The purpose was always to expand the knowledge in the specific disciplines - water management, waste management, landscape revitalisation.

In order to interconnect education and creative activity, they use the equipment of the Documentation and Digitalisation Centre of the **University Faculty of Philosophy**. Under the Research and Development for Innovation project "Modern educational and research infrastructure of the University Faculty of Philosophy", the Faculty of Philosophy purchased the following equipment: manual XFR spectrometer - analyser used in building industry, 3D scanner with accessories, server, specialised software, book scanner, specialised photographic equipment, PC editing shop and geodetic GPS.

During their studies, the students of the **Faculty of Education** learn about the instruments for bio-mechanical analysis of movement in the Movement Studies Laboratory. The students of artistic disciplines use professionally equipped departments for creative activities, e.g. PCs with advanced graphical SW, 3D printers, special cameras.

As for the arts, the choirs have a specific position (girls' chamber choir of the University Faculty of Education, mixed choir Chorea academica, NONA - a mixed chamber choir of non-artificial music, Schola cantorum - girls' choir of the junior elementary school department, Ústí children's choir of the University), the activity of which supports creative development of students and which represent the University both domestically and abroad.

Under the PARNET project, the Faculty of Science enabled its students to gain practical experience in companies and work on their final theses there (e.g. Nanovia, s. r. o., Litvínov, Spolchemie, a. s. Ústí n. L., ŠKODA Auto, a. s., Museum of the City of Ústí nad Labem, Mechtronic Education spol. s.r.o., Most). The students work on their bachelor and diploma theses in the Nuclear Physics Institute of the Czech Academy of Sciences in Řež near Prague, Inorganic Chemistry Institute of the Czech Academy of Sciences in Řež and TU Freiberg (Institute for Material Research) and University of Oslo, Department of Chemistry. They actively developed cooperation on students' internships and education mainly with the Ústí nad Labem Zoo and the Regional Museum in Most.

**VYCERRO**, along with the Department of Regional and Local Development of the University Faculty of Social and Economic Studies, held a project workshop in the final part of the VYCERRO project, which included a specialised seminar on the subject of "Project management". As a part of the type 1 key activity (expert internship abroad), 17 employees attended internships abroad (e.g. European Commission Brussels, University College London, Bochum Marketing GmbH., Moores University in Liverpool, and others). Internships were also held in the institutes in the Czech Republic. 8 academic employees attended internships which were documented by the action plans of cooperation with the visited institute. In this period, there were also type 3 internships held (student internship in an institute in the Czech Republic). They created a map which shows the places of the internships held (key activity No. 1) throughout the project period. They also prepared the e-learning course called "Tracer's guide to galaxy of research environment of the regional development in the Czech Republic".

The VYCERRO InRegion project was successfully completed as of 31 December 2014. For the entire duration of the project (2012-2014), 103 project outputs/products were completed, of which 67 innovated study courses, 10 new study courses, 20 study modules. There were also 6 publications released in the form of a collection from conferences held under the project, or in the form of conventional regional publications. In the final monitoring period of the project, the data was concentrated and transferred into the GIS output to be used for education in the key activity No. 3 (use of the advanced information

systems in education). The outputs were also posted on the Region and Society web portal, GIS section. In the key activity No. 3 (improvement of professional competences) 5 educational events were held, of which 2 workshops at the University and 3 international specialised seminars (conferences) at the University of West Bohemia. 6 academic employees attended the language courses abroad.

## 11.c STUDENTS' INVOLVEMENT IN CREATIVE ACTIVITY

The following approaches and instruments were used for involving the students of the bachelor's and master's degree study programmes in the creative activity of the University in 2014:

- talented students worked as assistant research personnel (including the students of the bachelor's degree study programmes),
- the students were members of the research teams working on projects under the students' grant competition (SGC) which were funded from the specific research funds,
- the students were engaged in the research teams working on research, development and artistic projects, including the projects supported by the internal grant systems of faculties and extraordinary scholarship,
- the University was supporting engagement of the students in competitions and awards, including the Rector's award for excellent outcome of research and artistic activity.

At the **Faculty of Social and Economic Studies**, the students participated in the development and creation of the AMIS information system, the function of which complements the STAG and MOODLE programmes in education organisation.

At the **Faculty of Arts and Design**, the students participated in design and free art oriented exhibitions, symposiums and art shows and competitions and took an active part in creation of publications at the faculty. The Curatorship students held exhibitions in the gallery premises run by the faculty. In 2014, the students had an opportunity to participate in the faculty project Dýchat Sudety (Breathe the Sudetenland) that was a part of an extensive international exhibition project Fashions of Democracy in the DOX contemporary art centre in Prague. A bilingual publication was released for the project.

### **Faculty of Production Technologies and Management**

The students of the full-time form of study take part in the research activity of the faculty in the form of research or educational support. The research outcome is included in education and the students learn about the areas directly related to education in the tutorials. The students of the doctoral study programme take part in the research for industry and external research projects; they also work on the research projects under the students' grant competition (SGC).

In 2014, 57 students participated as assistant researchers (6.5%) with 2,392 hours worked, 29 students worked as assistant teachers with 1,171 hours worked. Of the total number of the faculty students, that is 9.7% of the involved students out of the total number of the faculty students. As compared to 2013, the increase is almost 5% (2013 - 4.9%).

At the **Faculty of Health Studies**, the selected students of the bachelor's degree disciplines participated in establishing of teams for research in the Movement Study Laboratory and in the Lifestyle Diseases Laboratory. In these laboratories, they worked on the research part of their bachelor theses and assisted in the current projects under the students' grant competition of the Faculty of Health Studies.

The students of the **Faculty of Philosophy** participated in the creative activity in the form of the students' grant competitions or internal grants as a part of the institutional research. The students of the doctoral studies take an active part in the projects carried out by NAKI and the Czech Science Foundation (GACR).

The **Faculty of Education** supported engagement of the students in the creative activity by extraordinary grant scholarships. The outcome of the students' creative activity was presented on a regular basis in the form of public defence. An essential component of education comprises specialized courses and field trips related to aesthetics, and workshops. The emphasis was also on the outcome in form of the students' works and activities which are published in the form of exhibitions, concerts and websites. The students of the bachelor's and follow-up master's degree disciplines participated in the programmes in the Laboratory for Movement Studies where they worked on their bachelor and diploma theses.

The topics of the bachelor, diploma and doctoral theses at the **Faculty of Science** were related to the research projects of the Czech Science Foundation (GACR), Ministry of Education, Ministry of Industry and Trade, etc. The students used all of the instruments and IT equipment during their experimental work on their theses in the IT laboratories.

## 11.d SPECIFIC FINANCIAL FUNDS FOR RESEARCH, DEVELOPMENT AND INNOVATIONS

The list of projects of research, development and artistic activity performed at the University in 2014 is provided in the table below:

Centrally registered projects (CRP)

Name of grant, research project, patent or other creative activities	Source as classified by the Ministry of Education, Youth and Sports	Financial support of the University (in thousands of CZK)	University section
Non-additive interaction in water solutions of electrolyte: Role of polarisation and cross interactions	A	295	Faculty of Science
Properties of mesoporous silicate particles and interaction with nucleic acids	A	65	Faculty of Science
Intersections and movements: Austrian literature	A	50	Faculty of Philosophy
Cross-border management of flood risk	A	515	Faculty of Social and Economic Studies
Participation of the Czech representatives in the management boards of IUVSTA	A	100	Faculty of Science
Study of surface properties of substrates for tissue engineering	B	313	Faculty of Science
Study of the liquid-vapour balance of multi-compound mixtures at molecular level for use in chemical industry	B	250	Faculty of Science
Development of the culture of solving of mathematical problems in schools	B	640	Faculty of Science
Polymer solutions in external field: molecular understanding of electrospinning	B	1,578	Faculty of Science
Nano-crystalline metal oxides for safe and fast degradation of organophosphorus pesticides	B	848	Faculty of Environment
Ars Montana: Artistic and cultural transfer in open space of the Czech-Saxon region of Krušné hory at the threshold of the early modern times (1459-1620)	B	300	Faculty of Philosophy
Formation of territorial identities in areas with intensively transformed landscape: example of Northwest Bohemia	B	1,101	Faculty of Science
Solubility of non-polar liquids in water: Molecular study	B	624	Faculty of Science
Evolutionally psychological aspects of hierarchic difference between partners	B	171	Faculty of Science
Institutional cooperation in the region as an instrument for overcoming spatial inequalities in access to elementary education	B	428	Faculty of Science
Dependencies of topological spaces and their topological groups G of value continuous functions for the given topological group G	B	398	Faculty of Science
Plasmochemical modification of phyllosilicate for functional nano-structures	B	2,654	Faculty of Science
Studies of electrosoaking: Computer simulations of water solutions of electrolyte in open statistical system, limited geometry and electric field	B	398	Faculty of Science
Documentary data in research of social perception and adaptation strategies concerning selected historical natural hazards in the Czech Republic	B	356	Faculty of Science
Preparation of nano- and micro-structures on substrate of interactions with a laser beam	B	1,023	Faculty of Science

Name of grant, research project, patent or other creative activities	Source as classified by the Ministry of Education, Youth and Sports	Financial support of the University (in thousands of CZK)	University section
LIBRI CIVITATIS - documentation of and access to city libraries in the Czech Republic I	B	635	Faculty of Philosophy
Studies of graphene interactions - ion liquid and its use for polymer composite preparation	B	1,010	Faculty of Environment
Research and development of purification processes and optimisation of generator gas composition	C	5,000	Faculty of Environment
Impacts on micro-climate, air quality, eco-systems of water and soil in hydric recultivation of brown coal quarries	C	1,344	Faculty of Environment
Evaluation of cost efficiency of achieving proper condition of water bodies	C	545	Faculty of Social and Economic Studies
Evaluation of economic impacts in the Regional Sources Assessment system	C	460	Faculty of Social and Economic Studies
Research and verification of the technology of remediation of comprehensively	C	1,610	Faculty of Environment

Name of grant, research project, patent or other creative activities	Source as classified by the Ministry of Education, Youth and Sports	Financial support of the University (in thousands of CZK)	University section
contaminated earth			
Correlation of multimodal monitoring of secondary brain injury and its treatment in patients with craniocerebral injury and subarachnoid haemorrhage	C	123	Faculty of Health Studies
Changes of fractional anisotropy, mean diffusivity and volumetric values in patients with normal pressure hydrocephalus	C	92	Faculty of Health Studies
Social, cultural and ideological transfers in the history of the frontier region of the north-west and north Bohemia and their role for its growth and sustainability	C	2,895	Faculty of Philosophy
Stories of places. Topography of the nation's memory of the day	C	933	Faculty of Philosophy
Sources of raw materials for cultural heritage restoration	C	479	Faculty of Environment
Reconstruction of landscape and database of extinct towns in the Ústí nad Labem Region for cultural heritage preservation	C	1,244	Faculty of Environment
Documentation, digitalisation and presentation of vulnerable cultural heritage in the frontier region of North-West Bohemia	C	3,090	Faculty of Philosophy
Artistic exchange in the Krušné hory region between Gothic and Renaissance	C	756	Faculty of Philosophy
Rajhrad Benedictine Monastery as a cultural phenomenon	C	561	Faculty of Environment
<b>Total</b>		<b>32,884</b>	

Note: A = international and foreign grants; B = Czech Science Foundation (GACR); C = grants of the ministry departments



Projects of OP Education for Competitiveness registered in CRP 2014

Name of grant, research project, patent or other creative activities	Source as classified by the Ministry of Education, Youth and Sports	Financial support of the University (in thousands of CZK)	University section
Education improvement and research expansion at the Faculty of Production Technologies and Management (EDIMARE)	Research and Development for Innovations	20,551	Faculty of Production Technologies and Management
Modern educational and research and development infrastructure of the Faculty of Philosophy of the J. E. Purkyně University	VaVpl 4.1	267,238	Faculty of Philosophy + University
STMFull: full-text databases of research and development	VaVpl 4.3	55,981	University
VIZ: Research information sources for research and development	VaVpl 4.3	35,423	University
Materials and human resources for environment	VK 2.3	5,000	Faculty of Environment + Faculty of Production Technologies and Management
By partnership to improve quality of human resources preparation for science and technical education	VK 2.3	22,196	University
Chances for young researchers at the J. E. Purkyně University	VK 2.3	5,000	Faculty of Philosophy + Faculty of Science
Inclusive university, inclusive science	VK 2.3	24,684	University
NEFLT Network of foreign language teachers	VK 2.4	32,801	Faculty of Education
Full cost - University	VK 2.4	7,750	REC
<b>Total</b>		<b>476,624</b>	

Other projects with a character of research or artistic activity completed at the University in 2014 (not registered in CRP):

Name of grant, research project, patent or other creative activities	Source as classified by the Ministry of Education, Youth and Sports	Financial support of the University (in thousands of CZK)	University section
Interdisciplinary bilateral winter and summer school on energy systems in Austria and Czech Republic in 2014	Ministry of Education, Youth and Sports / AKTION	151	Faculty of Social and Economic Studies
Ze středu ven publication	MC	90	Faculty of Arts and Design
Non-agricultural and non-tourism economic industries in rural peripheries of the Visegrad countries	Visegrad Fund	263.3	Faculty of Science
German-Czech and Bavarian-Czech monumental places - 2-day workshop	ČNFB	14	Faculty of Social and Economic Studies
University Faculty of Arts and Design - Ceramics design	Ústí nad Labem Region	100	Faculty of Arts and Design
Regional round of grammar school students	Ústí nad Labem Region	10	Faculty of Philosophy



Projects supported by the students' grant competition of the University in 2014

Name of student grant	Source as classified by the Ministry of Education, Youth and Sports	Financial support of the University (in thousands of CZK)	University Faculty
Landscape - people - catastrophes: landscape transformation and adaptation to difficult natural conditions in the historical-geographical perspective	SGC	36	Faculty of Philosophy + Faculty of Science
Corruption and clientelism across centuries	SGC	300	Faculty of Philosophy
Human rights: history concepts and systematic interpretation	SGC	27	Faculty of Philosophy
For own idea, for own target (1939–1989)	SGC	250	Faculty of Philosophy
Being a burgess. Urban sub-population, culture and social relations from the beginning of the modern times to the 19th century	SGC	418	Faculty of Philosophy
Transformations of political party systems in the Central European countries	SGC	230	Faculty of Philosophy
Sovereignty (historical and systemic interpretation)	SGC	294	Faculty of Philosophy
Pirates political party in the European context	SGC	182	Faculty of Philosophy
Mapping of innovation potential of the Central European regions in post-transformation period	SGC	100	Faculty of Social and Economic Studies
Forensic economy and experimental testing of corruption and non-ethical conduct	SGC	148	Faculty of Social and Economic Studies
Tourism in Czech-Saxon area	SGC	123	Faculty of Social and Economic Studies
Luxury Oddements	SGC	130	Faculty of Arts and Design
Arts and audience - development of visual literacy through programmes mediating visual art and design	SGC	80	Faculty of Arts and Design
SONO	SGC	80	Faculty of Arts and Design
Ze středu ven	SGC	150	Faculty of Arts and Design
Simulation of liquid flowing in a given system	SGC	155.232	Faculty of Production Technologies and Management
Research and testing of new Al-Si alloys	SGC	127.268	Faculty of Production Technologies and Management
Impact and transmission of impulse in a system of isotropic and orthotropic bodies	SGC	157.57	Faculty of Production Technologies and Management
Research of impact of various modifiers on workability of Al-Si alloys	SGC	77.38	Faculty of Production Technologies and Management
Examination of vehicle model oscillation when negotiating a curve	SGC	151	Faculty of Production Technologies and Management

Name of student grant	Source as classified by the Ministry of Education, Youth and Sports	Financial support of the University (in thousands of CZK)	University Faculty
Study of the impact of various types of casting moulds and cooling velocity on the crystal inhomogeneity size in multi-alloyed aluminium alloys	SGC	223.55	Faculty of Production Technologies and Management
Efficiency of selected measures for protection of endangered and rare species of organisms	SGC	70	Faculty of Environment
Anthropology education in science and practice	SGC	100	Faculty of Environment
Use of GIS instruments for evaluation of agrarian ridges in the České středohoří highlands	SGC	90	Faculty of Environment
Ecological study of fungal pathogens in the blue spruce growth in the eastern part of the Krušné hory mountains		36	Faculty of Environment
Bio-diversity limits in the cultural anthropogenised landscape	SGC	63	Faculty of Environment
Ichological record in young neozonic sediments of Iceland	SGC	225	Faculty of Environment
Reactive sorbents for degradation of organophosphates in the environment	SGC	270	Faculty of Environment
Species composition development on anthropogenic substrates based on selected soil environment gradients	SGC	65	Faculty of Environment
Dependence of geomorphological development of river flood-plain on surface distribution of contaminants in alluvial sediments	SGC	219	Faculty of Environment
Reconstruction of the Mostecká pánev basin landscape based on historical data	SGC	232	Faculty of Environment
Preparation and model testing of highly efficient photocatalytic layers on the basis of phthalocyanines and metal complexes in micro-reactor arrangement	SGC	100	Faculty of Environment
Formative function of narration	SGC	144	Faculty of Education
Analysis of strategy of pedagogues and schools in terms of complex support of pupils with specific disadvantage in the Czech Republic and Slovak Republic	SGC	195	Faculty of Education
Metacognitive strategies of the fifth grade pupils used in specific domain of reading	SGC	313	Faculty of Education
Grounding in word-formative paradigmatic of verbs	SGC	140	Faculty of Education
Role of a family in educational context - regional perspective	SGC	83.5	Faculty of Education
Intuitive educational concepts of experts in visual arts	SGC	251.5	Faculty of Education
Analysis of diagnostic and educational methods applied in moral formation of an individual with serious socialisation deviation in the substitute care facilities	SGC	220	Faculty of Education

Name of student grant	Source as classified by the Ministry of Education, Youth and Sports	Financial support of the University (in thousands of CZK)	University Faculty
Analysis of selected didactic literature for the subject of visual arts at the elementary schools Relation of the content, form and historical context as the starting point for creating new didactic material	SGC	162.9	Faculty of Education
Modern media in literary education	SGC	133.6	Faculty of Education
Becoming a teacher - reflection and self-reflection of professional competences of students of the primary school teaching	SGC	197	Faculty of Education
Use of 3D modelling and related technologies in preparation of teachers of the secondary and tertiary education	SGC	154.5	Faculty of Education
Possible implementation of inclusive education	SGC	152	Faculty of Education
Phenomenological pedagogy and art	SGC	37	Faculty of Education
Gender aspects in literary education	SGC	139	Faculty of Education
Phonetic and acoustic and graphological correlates of extroversion and introversion of a personality of speakers - writers	SGC	205	Faculty of Education
Interactive software for teaching the Czech language as a foreign language	SGC	108	Faculty of Education
Games in mathematics classes	SGC	80	Faculty of Science
Landscape - people - catastrophes: landscape transformation and adaptation to difficult natural conditions in the historical-geographical perspective	SGC	158.4	Faculty of Science + Faculty of Philosophy
Application of computer simulations and numerical methods in chemical engineering and econophysics	SGC	250	Faculty of Science
Study of interaction of energy ions with solid matter and preparation of nano-structures with features for photonics and spintronics	SGC	165	Faculty of Science
Modification of polymer nano-particles by binding proteins for bio-medicine applications	SGC	280	Faculty of Science
Design of nano-composite luminophores on the basis of borons	SGC	352	Faculty of Science
Preparation of nano-films of metal oxides for electronics and gas sensors	SGC	200	Faculty of Science
Mesoscopic simulation of diffusion processes in porous materials with variable permeability	SGC	150	Faculty of Science
Deep profiling of elements by RBS method in samples with complex surface morphology - application to nano-structured materials	SGC	90	Faculty of Science
Mesoscopic simulation of nano-particles modified by diblock copolymers in solvents of various quality	SGC	111	Faculty of Science
New amplification methods of optical micro-fluid bio-sensors based upon dendrimer nanoparticle marks	SGC	191.6	Faculty of Science

Name of student grant	Source as classified by the Ministry of Education, Youth and Sports	Financial support of the University (in thousands of CZK)	University Faculty
Study of plasma polymeration on surface of phyllosilicates	SGC	200	Faculty of Science
Application of absolute continuity in theory of integral	SGC	95	Faculty of Science
<b>Total</b>		<b>9,869</b>	

## 11.e SCIENTIFIC CONFERENCES (Table 11.1)

Faculty	Number	With more than 60 participants	With international participation
Faculty of Social and Economic Studies	4	0	3
Faculty of Arts and Design	1	1	-
Faculty of Production Technologies and Management	5	2	5
Faculty of Health Studies	1	1	1
Faculty of Environment	1	1	1
Faculty of Philosophy	4	1	2
Faculty of Education	3	1	2
<b>Total</b>	<b>19</b>	<b>7</b>	<b>14</b>

## 11.f SUPPORT OF THE DOCTORAL DEGREE STUDY PROGRAMMES AND EMPLOYEES AT THE POST-DOCTORAL POSITIONS

The following instruments are used for supporting the students of the doctoral study programmes:

- ☐ possible engagement in projects of the students' grant competition,
- ☐ engagement in research and development projects,
- ☐ engagement in artistic projects,
- ☐ extraordinary scholarship,
- ☐ receipt of funds under the faculty internal grant schemes for support of students (travel to conferences, accommodation scholarship, support of publication).

The **Faculty of Arts and Design** worked on four doctoral grants focused on visual communication (funded from the University budget for support of artistic activity).

The **Faculty of Production Technologies and Management** supports the students of the doctoral study programmes and post-doctorands within its capabilities. The students of the doctoral study programmes take part in the research for industry and other activities which they may receive an extraordinary scholarship for. They continuously improve the quality of the laboratory equipment and support the material aspects of the research. They also deal with the space for the doctorands; the reconstruction of the H building in the campus was completed in 2014.

The personnel at the post-doctorand positions have the first opportunity to take part in residencies abroad, they are engaged in the projects and also take part in the research for industry. The conditions for further professional growth of these personnel are being established, including the habilitation procedure preparation. The post-doctoral project implemented in cooperation with the Faculty of Environment continued in 2014. A post-doctorand establishes close relations with the RIKEN research centre in Tokyo and industrial enterprises.

There is a strategy for the subject area. The post-doctorands are enabled an academic residency in a foreign significant department in the field, are entitled to apply for grants and create their own scientific profile by the research work.

In order to support the students, the Dean's Directive No. 3/2010 Stimulation of students of the full-time doctoral study at the University Faculty of Production Technology and Management was introduced.

At the **Faculty of Environment**, the ENVIMOD project focused on Modernisation of education of technical and natural science subjects at the University was completed in 2011-2014. It was participated in by the University Faculty of Science. The project was used to pay the foreign residencies of students of the doctoral study in Sweden and in the Russian Federation, participation in foreign scientific conferences and foreign residencies.

The **Faculty of Education** also supports the doctorands and young research personnel by internal grants.

The **Faculty of Science** intentionally engages the doctorands and young researchers in the research and development projects in CPR and in the projects of the University students' grant competition.

The ESF project Modernisation of education of technical and natural science subjects was finished in 2014. It was participated in by the University Faculty of Environment and Faculty of Science. One of the purposes of this project was to support the specialised internships, residencies and international mobility of students of the higher grades (doctorands), to improve the conditions for their individual research work and the organisational and material support of the "start-up projects". We can find similar elements also in the MEVAPOX project - Inter-disciplinary relations and support of practical application of natural science and technical study programmes of the University which the Faculty of Science continued in 2014.

## 11.g SHARE OF APPLICATION SPHERE IN CREATION AND IMPLEMENTATION OF STUDY PROGRAMMES

The application sphere was involved in creation and implementation of the study programmes in the following forms:

- direct participation of practitioners in education,
- participation of the application sphere representatives in the panels of the University and of the individual faculties,
- gradual building of incubators constituting the centres for cooperation with both commercial and non-profit-making sectors.

At the **Faculty of Social and Economic Studies**, the application sphere representatives took a direct part in education of selected subjects (mainly the selection courses). The application sphere is represented by the respective representatives in the selected panels of the faculty (e.g. the Scientific Board). They formulate the requirements for innovation of the study programmes here.

The **Faculty of Arts and Design** was and is the partner of the OPVK Life-netdesigning project - development of the designer's management and presentation skills in practical application. The purpose of the project is to design, create and practically verify the portable system of communication between the academic institute and the commercial sphere.

The Incubator - a centre for cooperation with the commercial and non-profit-making sector established by the faculty expanded its departments and, in cooperation with the selected students of the master's degree and doctoral study programmes, successfully completed projects in the area of design, graphical design and applied art in direct cooperation with the business entities or bodies of the public administration and local governments, and other organisations.

The **Faculty of Production Technologies and Management** has two advisory bodies established - the Industrial Council and informal Panel of Industrial Enterprise Directors. Both of these sections discuss the draft study plans, programmes and disciplines including the graduate profile. They also suggest preparation of new study programmes for accreditation when preparation of the follow-up study programme Quality Management started in 2014.

Another area of participation of the application sphere in education is participation of experts in the teaching process when they give one-time lectures, consult or oppose the diploma theses. The experts from the industry also participate in the final state examinations as committee members.

The professors, associate professors and physicians from Krajská zdravotní, a. s., Ústí nad Labem, associate professors and physicians from the Institute of Care for Mother and Child - Podolí hospital, Prague, were lecturing at the **Faculty of Health Studies**. In terms of practical applications, the Faculty of Health Studies works with the clinical practice mentors (experts in the individual health professions with professional qualification) who are mainly employees of Krajská zdravotní, a. s. The students do their internship in 195 medical departments.

The business sector representatives often take part in guidance of the bachelor and diploma theses, some also directly in lecturing of the specialised subjects at the **Faculty of Environment**. The representatives of the business sector and professional organisations are the fellow researchers of the OP Education for Competitiveness project "Modernisation of education of the technical and natural science subjects at the University", in which they participated in modernisation of the education in terms of the practical needs and the graduate profiling in terms of their future employability.

The **Faculty of Philosophy** holds specialisation lectures with participation of experts, the students do their internship in these entities, as well. The application sphere participates in supporting the residencies and education activities abroad under the projects of the students' grant competition and the institutional research, in work on the Research and Development for Innovation projects (new facilities) and NAKI.

At the **Faculty of Science**, the experts take part in education of subjects in the study programmes and in seminars. The application sphere takes part in education also by suggesting the topics of the students' qualification works, offering internship and field trips to the students. Cooperation mainly focuses on future employment of the students who the application sphere in the Ústí nad Labem region needs. The faculty holds round tables with the representatives of the industry in the region on cooperation in education and training for the application sphere. We receive the topics for the bachelor, diploma or doctoral theses of the students from the application sphere on a regular basis, whereas some of them were completed in 2014 and others are being worked on in close cooperation with the industrial partners.

## 11.h COOPERATION WITH THE APPLICATION SPHERE ON CREATION AND TRANSFER OF INNOVATIONS

Cooperation with the application sphere on creation and transfer of innovations takes different forms at the University, which is given by the diversified profile of the individual faculties and departments:

- presentation of the outcome of science and artistic activity to the business and public sector representatives,
- cooperation on science and commercial projects,
- building of joint departments of the applied research.

The **Faculty of Social and Economic Studies** cooperates with the enterprises and institutes in two forms. One is the cooperation based upon the long-term contractual basis with the partner enterprises and institutes, relying on the students' duty to do the internship. This concerns the Social Work and Regional Development disciplines. In this area, we cooperate with the respective institutes, mainly in the public sector (regional authorities, social care institutes). The students do their internship there, to the benefit of both the faculty and the institutes.

Another form is the cooperation also with a contractual basis, however, the internship in this case is fully dependent on the personal activity of the students. The faculty has concluded such contracts with about 10 companies (e.g. Spolchemie, a. s. Ústí n. L., Mondi Štětí, a. s., ČSOB, Allianz, CDL System Ústí n. L., etc.). In addition to the above-mentioned internship, they also contain the opportunity for the enterprises to present their activity in the information media of the faculty, in special lectures or gatherings with the students, the enterprises take part in specifying the topics of the bachelor and master theses which take into account their needs, help organise the subject field trips for the students, etc.

Cooperation of the **Faculty of Production Technologies and Management** with the application sphere is provided by the Science and Technology Park (STP). STP prepares contracts, coordinates the activities related to research and contractual projects, records the volume of research and monitors performance of the contract timing. Most of the academic personnel, students of the doctoral study programme and to a lower extent the students of senior years are involved in the work of STP according to their expertise. STP also has a researcher that takes care of the part of research for industry and is available to the STP park. All cooperation is contractual (under single, short-term, long-term contracts) with a preliminary costing of works.

Cooperation with the application sphere at the **Faculty of Philosophy** takes place in the area of research and education by engaging the practitioners in the research projects and education. This makes the information transfer bilateral. In 2014, cooperation on research of and provision of access to municipal libraries continued, which the department cooperates on with other academic departments (Faculty of Philosophy of the Charles University), but mainly with archives, whose personnel they train on work with the Libri Civitatis database and cooperates on filling thereof. Another example is the use of the state-of-the-art documentary equipment of the Centre of cultural heritage documentation and digitalisation which takes part in the training on 3D scanning and other technologies. Under the NAKI project performed in 2014, the methodologies for documenting the individual endangered monument types certified by the Ministry of Culture of the Czech Republic were prepared. The information transfer between the department of history and the application sphere, which are the specialised sectors in this case (archives, museums, public services, municipal governments, etc.) can also constitute joint issue of specialised magazines - Monumentorum Custos, a magazine for monuments of the north-west Bohemia (co-issued by the National Heritage Institute in Ústí nad Labem), and the Ústecký sborník historický magazine (co-issued by the Museum of the City of Ústí nad Labem).

With the support of the grant from CESNET, the **Faculty of Health Studies** worked on the research project focused on establishment of infrastructure for transfer of the medical operations between Krajská zdravotní, a. s. (Masaryk hospital in Ústí nad Labem) and the Faculty of Health Studies. The faculty was preparing the use of "tele-bridge" for low-latency 3D HD transmissions in real time and also recorded. Passive 3D projection in a specialised classroom in the Faculty of Health Studies enables interactive communication with personnel in the Masaryk hospital.

There were seven clinics established in 2013 and 2014 to support the cooperation between the faculty and Krajská zdravotní, a.s. Masarykova nemocnice, o.z. in Ústí nad Labem: Neuro-surgery clinic, Cardiology clinic, Clinic of urology and robotic surgery, Clinic of gynaecology and midwifery, Clinic of trauma surgery, Ophthalmic clinic and Children's clinic.

The **Faculty of Environment** deals with a number of the applied research projects in cooperation with the business sphere; this is mostly cooperation based upon long-term formal and informal relations. Along with LentiKat's, a. s., Prague, the faculty established the Centre of modern bio-technologies which successfully completed several projects focused on waste water treatment. The research outcome is



implemented by LentiKat's under the concluded license agreements. Use of modern microbiological procedures in treatment of contaminated soil is the subject of cooperation with MikroChem LTK, spol. s r. o. (joint projects for the Ministry of Industry and Trade). In the premises of DSK engineering, s. r. o., Rtyň nad Bílinou, a pilot unit used for the bio-mass gasification research was established where the faculty has a laboratory available with the state-of-the-art equipment for the gasification process monitoring. They work on several projects for the Technology Agency of the Czech Republic or for the Ministry of Industry and Trade here, and the first results were already patented and implemented. The project No. 01020592 "Impacts on micro-climate, air quality, eco-systems of water and soil in hydric recultivation of brown coal quarries" (2011-2014) was dealing with the practical aspects of the Most lake eco-system changes in cooperation with the Výzkumný ústav pro hnědé uhlí, a. s., Most, and the Institute of Atmospheric Physics of the Czech Academy of Sciences.

The **Faculty of Science** cooperates with the application sphere on creation and transfer of innovations in four areas:

- Education - participation of practitioners in education,
- Providing opportunities for the students' internship,
- Specifying the topics from the application sphere for the students' theses,
- Contractual research - present partners: e.g. ŠKODA Auto, a. s.

The applied research at the faculty is performed in cooperation with the industrial partners under the contractual research, or in cooperation with the academic institutes under the research and development projects.

Under the ESF project PARNET, the Faculty of Science was systematically establishing the partner network with the application sphere. They held round tables with the representatives of the potential partners from business in area of geography, IT and nano-technologies. The faculty also dealt with the bio-sensor development in cooperation with the Bio-Technology Institute of the Czech Academy of Sciences.

Collaboration with the application sphere was further developed by the activities of the Ústí Material Centre under the ESF projects and the Objective 3 projects, such as INPOK, ParNet, Mevapox, InWest, ProTransfer and others. The main purpose of the InWest project focused on the economic development of the Saxon-Czech borderland was to support the cooperation of the academic experts, public administration institutes and small and medium-sized companies to enable the systematic and direct transfer of the scientific knowledge to the practice for purposes of the economic development of the region. The key activity of the project was the joint work of the Czech and German students under the supervision of the teachers and experts with the aim to create interesting and feasible outcome for practical application.

Under the ProTransfer project, they created the model for transfer of technology in cooperation with the partners from TU Dresden. Experience of both parties were exchanged during the workshops held in the form of round tables.

**VYCERRO** has been working with a broad spectrum of both private and public institutes in the long term. Cooperation takes place based on the ad hoc projects and tasks which are enquired by the application sphere. In 2014, VYCERRO cooperated with institutes (ČSÚ ČR, VŠE Praha, Česká republika – Česká rozvojová agentura, CzechInvest), departments (Czech Ministry of Local Development, Ministry of Environment, Ministry of Industry and Trade), municipal and regional authorities (Ústí nad Labem Region, Ústí nad Labem, Děčín, Kamenice) and major Czech organisations from the private sector (PricewaterhouseCoopers Česká republika, s. r. o., VPÚ DECO Praha a. s., MEPCO, s. r. o.). VYCERRO also became a partner of the Municipality II project.

## 11.i CONTRACTS WITH THE APPLICATION SPHERE ENTITIES INVOLVED IN EDUCATION IN THE ACCREDITED STUDY PROGRAMMES

Entity	Total contracts	Contracts concluded in 2014
Faculty of Production Technologies and Management	6	3
Faculty of Health Studies	195	3
Faculty of Philosophy	7	0
Faculty of Science	1	0
<b>Total</b>	<b>209</b>	<b>6</b>



#### 11.j EXPERTS FROM THE APPLICATION SPHERE INVOLVED IN EDUCATION IN THE ACCREDITED STUDY (Table 11.2)

Section	Persons
Faculty of Social and Economic Studies	8
Faculty of Production Technologies and Management	9
Faculty of Health Studies	95
Faculty of Environment	12
Faculty of Philosophy	24
Faculty of Education	24
Faculty of Science	30

#### 11.k DISCIPLINES WITH PRACTICAL APPLICATION (Table 11.3)

Section	Disciplines
Faculty of Social and Economic Studies	2
Faculty of Production Technologies and Management	4
Faculty of Health Studies	4
Faculty of Environment	4
Faculty of Philosophy	11
Faculty of Education	54
Faculty of Science	8

#### 11.l INCOME FROM SALE OF LICENSES

The University had no income from licenses in 2014.

#### 11.m INCOME FROM CONTRACTUAL JOBS

Faculty	Income from contractual jobs (in CZK)	Other income, donations (in CZK)
Faculty of Social and Economic Studies	237,495.87	-
Faculty of Arts and Design	-	122,979.00
Faculty of Production Technologies and Management	986,412.44	532,578.60
Faculty of Environment	107,000.00	-
Faculty of Philosophy	-	512,121.00
Faculty of Science	345,651.11	-
REC	81,428.00	-
VYCERRO	143,600.00	-
<b>Total</b>	<b>1,901,578.33</b>	<b>1,167,678.60</b>

#### 11.n INCOME FROM PAID COURSES HELD FOR EMPLOYEES OF THE APPLICATION SPHERE ENTITIES

Faculty	Income from paid courses held (in CZK)
Faculty of Production Technologies and Management	55,785

#### 11.o INCOME FROM SPECIALISED CONSULTANCY AND ADVISORY ACTIVITIES OR SPECIALISED ACTIVITIES PROVIDED TO THE APPLICATION SPHERE ENTITIES

Faculty	Income from specialised consultancy (in CZK)
University	0

## 11.p NUMBER OF SPIN-OFFS/START-UPS (Table 11.4)

Faculty	Number of spin-offs/start-ups
University	0

## 11.q COMMERCIALISATION STRATEGY

The University does not have a specific commercialisation strategy defined.

The University established the Applied Research Council. Its task is to draft the university strategy for the area related to the applied research, innovations, new technologies and transfer of technologies. The University strategy will be based on the National Policy of Research, Development and Innovations of the Czech Republic.

The faculties implemented the following strategies:

The **Faculty of Production Technologies and Management** does not intend to transfer to the commercial basis. The objective of the faculty is to establish a functional service for the industrial production mainly in the area of its focus on preparation of high-quality students of the required profiles, as well as on the research and support of innovations in production. This is the reason why it has been working with around forty industrial enterprises under the long-term, short-term or one-time contracts in the long term. Other enterprises take part in preparation of the graduates - internships, work on diploma theses, or field trips.

In 2010, the faculty established the Science and Technology Park, which provides facilities for the supplementary activities of the faculty. The present trend is conditioned and confirmed by the increasing income from the supplementary activities for the industry. The above-mentioned facility is the only aspect of the commercialisation of the research and development outcome at the faculty. STP is the strategic decision of the faculty management and operates on the basis of income and expense items. They assume the intellectual property protection to be used in the future - several patents and industrial designs have been created or applied for.

2 patent applications were submitted and 2 patents accepted in 2014:

No.	Name	Status
PUV2014-30242/UV	Equipment for coating metal moulds of the Al- Mg and Al-Si alloys	Applied
PUV 2014-778/patent	Method of coating metal moulds of the Al- Mg and Al-Si alloys	Applied
304,633 patent	Fatigue bend tests equipment	Approved
304,847 patent	Method of grinding pieces of aluminium alloys to achieve high surface quality	Approved

The strategy of the **Faculty of Science** focuses on establishing a partner network with the application sphere, initiated under the ESF PARNET project. The activities under the project included holding of round tables with the industrial partners from the region, analysing of their needs and the educational cooperation agreements. The faculty actively searched for industrial partners in cooperation with the Regional Authority of the Ústí nad Labem Region. Under the project, they managed to create a partner network of dozens of cooperating entities from the industry. This network will be used not only as a stimulus of the applied research in the future, but it will also be beneficial to teaching and education of the graduates and their preparation for practical application as a source of topics for the students' theses - bachelor, master and doctoral. The Faculty of Science and Faculty of Environment became a part of the EnviNanoCz research infrastructure that will conduct the contractual research in the area of nano-technologies and nano-materials for environmental applications (coordinated by the J.H. Institute of the Czech Academy of Sciences, Prague).

The **Faculty of Environment** mainly uses its broad contacts with the business sphere for commercialisation. Most of the research projects are prepared in cooperation with the industrial or other partners - potential implementers of the research outcome. In the past years, a very good platform for realisation of the environmental research outcome was the research centre for "Advanced redevelopment technologies and processes", which was closed in 2011, however, the informal association of the research institutes and companies established during the centre project management continues to contribute to commercialisation of the research outcome.

## 11.r ENGAGEMENT IN THE REGION

In line with the adopted strategy of the University development for 2010-2020 and the University Long-Term Plan for 2011-2015, the University continued building the network of actively cooperating companies, societies and institutes of the region. This network has been gradually established in the long term based on the individual specific projects with participation of the “business” (exploring, educational, artistic). Based on the Memorandum of cooperation in establishing better prospects for the Ústí nad Labem Region, signed by the representatives of the University, Ústí nad Labem Region and Severočeské doly, a. s., the University made efforts to improve engagement of other companies of the Ústí nad Labem Region in the long-term support of education in the region also in 2014. This mainly concerned the following enterprises, firms and institutes which the University had been cooperating with at various levels and in various forms for years, such as RWE Energie, a. s., Československá obchodní banka, a. s., Branch of Ústí n. L., Všeobecná zdravotní pojišťovna a.s., Branch of Ústí nad Labem, Allianz pojišťovna a. s., Branch of Ústí nad Labem. Along with the representatives of the Ústí nad Labem Region, Economic and Social Council of the Ústí nad Labem Region, and the Regional Economic Chamber of the Ústí nad Labem Region, the University signed the Memorandum of partnership and cooperation in preparation and implementation of the Treaty on Employment in the Ústí nad Labem Region, as a strategic development programme document to support employment and education in the Ústí nad Labem Region in 2014-2020.

The **Faculty of Production Technologies and Management** is the only technical faculty based in the region and the only faculty in the Czech Republic that focuses on the engineering production and servicing of the equipment and machinery operated in the industry. This is the reason why it has a non-substitutable place in the region where it plays a critical role in preparation of innovations and entry of new investors in the region. It closely works with the industry in the region and with the regional government. It also takes part in the regional development plans in certain stages thereof. In cooperation with the regional government, it works on the issues of investments in the region in relation to the investors or the issues of the faculty operation and preparation of the graduates. The faculty participated in development of the Regional Innovation Strategy (RIS) and is a member of the Regional Council for Competitiveness. With respect to the specialisation of the faculty and of its research (material and technology), it plays an important role in terms of the entire Czech Republic. The faculty prepares the graduates from all over the Czech Republic, especially in some disciplines which have a specific content and position, e.g. Production Management, Energy - Heat Industry.

## 12. INTERNATIONALISATION

### 12.a STRATEGY FOR DEVELOPMENT OF INTERNATIONAL RELATIONSHIPS AND THE INTERNATIONAL ENVIRONMENT

In line with the long-term strategy for 2010-2020 and the Long-Term Prospect for 2011-2015, the University continued to support mobility of students and academic personnel in terms of educational, research and development, artistic and other creative activities also in 2014, and was establishing an international environment at the university - trying to support mobilities of students and academic personnel also from sources other than the allocated funds. Mobility of students and academic personnel was funded in 2014 not only from the Erasmus/Erasmus+ programme and IP of the Ministry of Education, Youth and Sports, but also with the support of a grant from Severočeské doly, a. s., especially in the case of the students of the doctoral study programmes.

The University further developed bilateral and multilateral cooperation with foreign institutes, also by conducting joint study programmes (active double degree of the Faculty of Philosophy with Universität Bayreuth, in the preparatory phase of the joint study programme of the Faculty of Environment with the state research university of technology in Kazan). As of 31 December 2014, the University had 36 cooperation agreements concluded with foreign universities, which was 3 agreements more than in 2013.

With the aim of participating in other programmes focused on education in 2014-2020, the University participated in the Erasmus+ programme project: key action 2 strategic partnerships in 2014.

As of 31 October 2014, 300 foreign nationals studied at the University, of which 76 students were accepted for short-term residencies under various exchange programmes.

### 12.b PARTICIPATION IN INTERNATIONAL EDUCATIONAL PROGRAMMES INCLUDING MOBILITIES (Table 12.1)

In 2014, the University was participating in a number of programmes supporting the international cooperation, in particular, mobility the of the University students and employees.

Engagement of the University in international educational programmes including mobilities (Table 12.1)

	EU programmes for education and vocational training								CEEPUS	Aktion	Institutional Plan	Other	Total
	Erasmus/Erasmus+	Comenius	Grundtwig	Leonardo	Jean Monnet	Erasmus Mundus	Tempus	Other					
Number of projects	3	3					1		12	see Item 11.d	1		20
Number of students sent	310								2		59	5	376
Accepted students	189								5			10	204
Number of academic employees sent	115	4					7		6		4	15	151
Accepted academic employees	55								20				75
Number of other employees sent	7												7
Other employees accepted	3												3
Grants (in thousands of CZK)	18,303	203					369		388		1,995	1108	22,366

Note: Includes mobilities of students of less than 28 days and mobilities of academic personnel of less than 5 days.

#### 12.b.a ERASMUS/ERASMUS+

Granting of the Erasmus Charter for Higher Education, entitling to participate in the EU programmes focused on education in 2014-2020, enabled the University to continue to participate in the Erasmus+ programme. Under the **Erasmus/Erasmus+** projects focused on **mobility of students and employees**, the University had 254 bilateral contracts concluded with 158 foreign universities in 22 countries in 2014. The residencies or internships abroad were participated in by 376 University students, and 122 University employees attended the educational residencies and training abroad (the figure specified also

includes mobilities of less than 5 days). 189 foreign students studied or worked in the University Erasmus programme and 58 employees from foreign partner universities participated in the educational residencies and training at the University.

Through the Faculty of Environment, the University also took part in 1 Erasmus+ project focused on strategic partnerships.

Programme/Project No.:	Erasmus KA2 / 2014-1-RO01-KA203-002737
Name:	The innovative blended learning concept for resource efficiency
Coordinator:	Institutul Național de Cercetare- Dezvoltare pentru Bioresurse Alimentare, Romania

The partner institutes of the University in the Erasmus programme in 2014 were the following foreign universities (as of 11 March 2014):

<b>Belgium</b>
Katholieke Universiteit Leuven
<b>Bulgaria</b>
Kolezh po telekomunikatsii i poshti
<b>Estonia</b>
Tallinna Ülikool
Tartu Ülikool
<b>Finland</b>
Jyväskylän yliopisto
Kymenlaakson Ammattikorkeakoulu, Kouvola
Mikkelin ammattikorkeakoulu
<b>France</b>
Ecole d'Art Maryse Eloy, Paris
Ecole nationale supérieure d'art de Nancy
Université d'Evry-Val-d'Essonne
Université d'Orléans
Université de Bourgogne, Dijon
Université de Pau et des Pays de l'Adour
Université de Technologie de Belfort-Montbéliard
Université du Maine, Le Mans
<b>Croatia</b>
Sveučilišta Josipa Jurja Strossmayera u Osijeku
Sveučilište u Rijeci
Zdravstveno veleučilište, Zagreb
<b>Italy</b>
Accademia di Belle Arti "Lorenzo da Viterbo"
Accademia di Belle Arti di Napoli
Università degli Studi della Tuscia, Viterbo
Università degli Studi di Genova
Università degli Studi di Torino
Università degli Studi di Trento
Università degli Studi di Verona
<b>Lithuania</b>
Aleksandro Stulginskio universitetas
Kauno technologijos universitetas
Lietuvos edukologijos universitetas, Vilnius
Socialnių Mokslų Kolegija, Klaipėda
Šiaulių universitetas
Vilnius Dailės Akademija
<b>Latvia</b>
Latvijas Lauksaimniecības Universitāte, Jelgava
Latvijas Mākslas Akadēmijā, Rīga
Latvijas Universitāte, Rīga
<b>Hungary</b>
Károli Gáspár Református Egyetem, Budapest
Nyugat-magyarországi Egyetem, Sopron
Pécsi Tudományegyetem
Szegedi Tudományegyetem

<b>Germany</b>
Albert-Ludwigs-Universität Freiburg
Bauhaus-Universität Weimar
Ernst-Moritz-Arndt-Universität Greifswald
Evangelische Hochschule Dresden
Fachhochschule Düsseldorf
Fachhochschule Schmalkalden
Friedrich-Schiller-Universität Jena
Hochschule für Technik und Wirtschaft Dresden
Hochschule Osnabrück
Julius-Maximilians Universität Würzburg
Karlsruher Institut für Technologie
Katholische Hochschule Freiburg
Martin-Luther-Universität Halle-Wittenberg
Otto-Friedrich-Universität Bamberg
Technische Universität Dortmund
Technische Universität Dresden
Technische Universität Chemnitz
Universität Bayreuth
Universität Bielefeld
Universität Flensburg
Universität Leipzig
Universität Rostock
<b>Norway</b>
Høgskolen i Telemark, Notodden
<b>Poland</b>
Akademia Pomorska w Słupsku
Akademia Sztuk Pięknych w Warszawie
Akademia Wychowania Fizycznego we Wrocławiu
Dolnośląska Szkoła Wyższa, Wrocław
Karkonoska Państwowa Szkoła Wyższa w Jeleniej Górze
Państwowa Wyższa Szkoła Zawodowa im. Angelusa Silesiusa w Wałbrzychu
Politechnika Częstochowska
Politechnika Krakowska im. Tadeusza Kościuszki
Politechnika Lubelska
Politechnika Poznańska
Uniwersytet Technologiczno-Humanistyczny im. Kazimierza Pułaskiego w Radomiu
Politechnika Warszawska
Uniwersytet Ekonomiczny we Wrocławiu
Uniwersytet Jana Kochanowskiego w Kielcach
Uniwersytet im. Adama Mickiewicza w Poznaniu
Uniwersytet Jagielloński w Krakowie
Uniwersytet Łódzki
Uniwersytet Mikołaja Kopernika, Toruń
Uniwersytet Przyrodniczo-Humanistyczny w Siedlcach
Uniwersytet Rzeszowski
Uniwersytet Warszawski
Uniwersytet Wrocławski
<b>Portugal</b>
Instituto Politécnico de Leiria
Instituto Politécnico do Porto
Universidade de Évora
Universidade do Minho, Braga
Universidade do Porto
<b>Austria</b>
Montanuniversität Leoben
Pädagogische Hochschule Kärnten - Viktor Frankl Hochschule, Klagenfurt
Pädagogische Hochschule Wien
Private Pädagogische Hochschule der Diözese Linz
Universität Wien

<b>Romania</b>
Academia de Politie "Alexandru Ioan Cuza", Bucuresti
Universitatea din București
<b>Greece</b>
Aristoteleio Panepistimio Thessalonikis
Panepistimio Egeou, Mytilene
Panepistimio Kritis, Rethymno
Technologiko Ekpaideutiko Idrima Kritis
<b>Slovakia</b>
Ekonomická univerzita v Bratislave
Katolícka univerzita v Ružomberku
Prešovská univerzita v Prešove
Slovenská technická univerzita v Bratislave
Technická univerzita v Košiciach
Technická univerzita vo Zvolene
Trnavská univerzita v Trnave
Univerzita Komenského v Bratislave
Univerzita Konštantína Filozofa v Nitre
Univerzita Mateja Bela v Banskej Bystrici
Univerzita Pavla Jozefa Šafárika v Košiciach
Univerzita sv. Cyrila a Metoda v Trnave
Zilinská univerzita v Ziline
<b>Slovenia</b>
Univerza v Ljubljani
Univerza v Mariboru
Visoka šola za varstvo okolja, Velenje
<b>Spain</b>
Universidad Carlos III de Madrid
Universidad Complutense de Madrid
Universidade da Coruña
Universidad de Huelva
Universidad de Jaén
Universidad de Málaga
Universidad de Sevilla
Universidad de Valladolid
Universidad de Zaragoza
Universidad del País Vasco/Euskal Herriko Unibertsitatea, San Sebastian
Universidad Pablo de Olavide de Sevilla
Universidade de Santiago de Compostela
Universidade de Vigo
<b>Sweden</b>
Högskolan Kristianstad
Karlstads universitet
Umeå universitet
<b>Turkey</b>
Abant İzzet Baysal Üniversitesi, Bolu
Ahi Evran Üniversitesi, Kırşehir
Anadolu Üniversitesi, Eskişehir
Balıkesir Üniversitesi
Bartın Üniversitesi, Bartın
Çukurova Üniversitesi, Adana
Dokuz Eylül Üniversitesi, İzmir
Dumlupınar Üniversitesi
Ege Üniversitesi, Bornova/İzmir
Firat Üniversitesi, Elazığ
Gazi Üniversitesi, Ankara
Hacettepe Üniversitesi, Ankara
İstanbul Üniversitesi
İstanbul Teknik Üniversitesi
İzmir Katip Celebi Üniversitesi

<b>Turkey</b>
Karadeniz Teknik Üniversitesi, Trabzon
Mehmet Akif Ersoy Üniversitesi, Burdur
Mimar Sinan Güzel Sanatlar Üniversitesi, İstanbul
Muğla Sıtkı Koçman Üniversitesi
Nişantaşı Üniversitesi, İstanbul
Pamukkale Üniversitesi
Recep Tayyip Erdoğan Üniversitesi, Rize
Sakarya Üniversitesi
Süleyman Demirel Üniversitesi, Isparta
Trakya Üniversitesi, Edirne
Uludağ Üniversitesi, Bursa
Yıldız Teknik Üniversitesi, İstanbul

#### Erasmus – mobility – development

Academic year	Trips		Arrivals	
	Students	Academic personnel	Students	Academic personnel
2009/2010	204	98	79	56
2010/2011	231	106	109	70
2011/2012	259	101	99	54
2012/2013	250	110	89	74
2013/2014	200	129	115	79

#### Erasmus - partner institutes and bilateral contracts - development

Erasmus	Partner universities	Bilateral contracts
2010	162	272
2011	178	298
2012	196	328
2013	197	311
2014	158	254

#### 12.b.b COMENIUS

Via the Faculty of Social and Economic Studies and the Faculty of Education, the University participated in 3 Comenius projects:

<b>Programme/Project No.:</b>	<b>Comenius / COM-MP-2012-016</b>
<b>Name:</b>	Life of minorities with us or alongside us?
<b>Coordinator:</b>	Gymnázium a Střední odborná škola dr. Václava Šmejkal, Ústí nad Labem, příspěvková organizace

<b>Programme/Project No.:</b>	<b>Comenius / 526596-LLP-1-2012-1-ES-Comenius-CMP</b>
<b>Name:</b>	Teacher Competences for Plurilingual Integration
<b>Coordinator:</b>	Centro de Formación del Profesorado en Idiomas, Valladolid, Spain

<b>Programme/Project No.:</b>	<b>Comenius / 518097-LLP-1-2011-BE-COMENIUS- CMP</b>
<b>Name:</b>	EDGE: Education and Gender
<b>Coordinator:</b>	Hogeschool- Universiteit Brussel, Belgium

#### 12.b.c TEMPUS

Via the Faculty of Environment, the University participated in 1 Tempus project:

<b>Programme/Project No.:</b>	<b>Tempus / 511426-TEMPUS-1-2010-1-RU-TEMPUS-JPCR</b>
<b>Name:</b>	Reform of High School Education in the field of Biotechnology: Development of new BSc./MSc.-Programs
<b>Coordinator:</b>	Российский химико-технологический университет им. Д.И. Менделеева, Москва, Russia



#### 12.b.d CEEPUS

In 2014, the University, via the Faculty of Social and Economic Studies, Faculty of Production Technologies and Management and Faculty of Education, was engaged in 12 projects under the CEEPUS programme:

Programme/Project No.:	CEEPUS / CIII-SK-0606-04-1415
Name:	Urban innovations network
Coordinator:	Slovenská technická univerzita v Bratislave, Slovakia

Programme/Project No.:	CEEPUS / CIII-BG-0613-04-1415
Name:	Nanotechnologies, materials and new production technologies – university cooperation in research and implementation of joint programs of study by stimulating academic mobility
Coordinator:	Технически университет-София, Bulgaria

Programme/Project No.:	CEEPUS / CIII-PL-0701-02-1314; CIII-PL-0701-03-1415
Name:	Engineering as communication language in Europe
Coordinator:	Politechnika Koszalińska, Poland

Programme/Project No.:	CEEPUS / CIII-RO-0202-07-1314; CIII-RO-0202-08-1415
Name:	Implementation and utilization of e-learning systems in study area of production engineering in Central European Region
Coordinator:	Universitatea de Nord Baia Mare, Romania

Programme/Project No.:	CEEPUS / CIII-RS-0304-07-1415
Name:	Technical characteristics researching of modern products in machine industry (machine design, fluid technics and calculations) with the purpose of improvement their market characteristics and better placement on the market
Coordinator:	Univerzitet u Novom Sadu, Serbia

Programme/Project No.:	CEEPUS / CIII-RS-0507-03-1314; CIII-RS-0507-04-1415
Name:	Research, development and education in precision machining
Coordinator:	Univerzitet u Novom Sadu, Serbia

Programme/Project No.:	CEEPUS / CIII-SK-0030-09-1314; CIII-SK-0030-10-1415
Name:	From preparation to development, implementation and utilisation of joint programs in study area of production engineering
Coordinator:	Zilinská univerzita v Žiline, Slovakia

Programme/Project No.:	CEEPUS / CIII-HU-0028-08-1415
Name:	Active methods in teaching and learning mathematics and informatics
Coordinator:	Miskolci Egyetem, Hungary

#### 12.b.e AKTION

See Item 11.d

#### 12.b.f INSTITUTIONAL DEVELOPMENT PLAN

In 2014, the University obtained financial funds for the international mobility of students and academic personnel of the University under the **Institutional Development Plan** in the total amount of CZK 1,995,000. Under this project, 23 students of the University did a residency at foreign universities for 114.5 months, of which 17 students were sent for scholarship residency at a partner university under the direct contractual cooperation for 85 months and 6 students to foreign universities which our University does not have a contractual relationship with for 29.5 months. The project also supported travels of 36 students and 4 academic personnel for purposes of preparation of joint study programmes and sport and artistic representation of the University abroad and preparation of 4 e-learning courses in a foreign language.

Development programmes/Institutional Development Plan - mobility - development

Year	Trips		Arrivals	
	Students	Academic personnel	Students	Academic personnel
2010	45	-	-	-
2011	36	-	-	-
2012	34	-	-	-
2013	28	-	-	-
2014	59	4	-	-

## 12.b.g OTHER PROGRAMMES

In 2014, the University directly cooperated with 36 foreign universities under contracts. Under these contracts, student and teacher exchanges were performed in 2014, conferences, seminars, field trips and workshops were organized and cooperation took place in the area of scientific and publication activities.

Cooperation agreements of the University with foreign universities as of 31 December 2014:

### Azerbaijan

Baki Slavyan Universiteti

### Israel

Beit Berl Academic College  
Bezalel Academy of Art and Design, Jerusalem  
Holon Institute of Technology

### Kazakhstan

Ахмет Байтұрсынов Атындағы Костанай Мемлекеттік Университеті

### Hungary

Nyíregyházi Főiskola

### Germany

Hochschule Zittau/Görlitz  
Leibniz-Institut für ökologische Raumentwicklung e.V., Dresden  
Technische Universität Bergakademie Freiberg  
Technische Universität Dresden Universität Bayreuth

### Poland

Akademia im. Jana Długosza w Częstochowie  
Akademia Sztuk Pięknych im. Jana Matejki w Krakowie  
Akademia Sztuk Pięknych w Warszawie  
Uniwersytet Pedagogiczny im. Komisji Edukacji Narodowej w Krakowie

### Russia

Владимирский Государственный Университет имени Александра Григорьевича и Николая Григорьевича Столетовых  
Казанский национальный исследовательский технологический университет  
Российский государственный педагогический университет им. А. И. Герцена, Санкт-Петербург  
Российский университет дружбы народов, Москва  
Российский химико-технологический университет им. Д.И. Менделеева, Москва  
Санкт-Петербургский государственный политехнический университет, Санкт-Петербург  
Сибирский федеральный университет, Красноярск  
Сочинский государственный университет туризма и курортного дела, Сочи  
Уральский государственный университет путей сообщения, Екатеринбург

## Slovakia

Katolícka univerzita v Ružomberku  
Prešovská univerzita v Prešove

Univerzita Mateja Bela v Banskej Bystrici  
Univerzita sv. Cyrila a Metoda v Trnave

## Thailand

Chiang Mai University

## Ukraine

Чорноморський державний університет імені Петра Могили  
Донецький національний університет  
Київський національний лінгвістичний університет  
Кіровоградський державний педагогічний університет імені Володимира Винниченка  
Луганський національний університет імені Тараса Шевченка  
Миколаївський національний університет ім. В. О. Сухомлинського

## Vietnam

Trường Đại Học Nha Trang

6 students from the foreign partner universities studies at the University in the form of **direct cooperation**.

In 2014, 3 students and 1 academic employee of the University did their residencies abroad under the **international contracts** with foreign universities. The University students were reimbursed the travel expenses by the Ministry of Education, Youth and Sports in the amount of CZK 21,000 and an academic employee in the amount of CZK 25,000.

4 foreign students studied at the University under the **foreign development assistance** (the "governmental scholarship holders"). The subsidy for the study of the foreign students at the University in 2014 amounted to CZK 713,000.

One student of the Faculty of Education received the scholarship of the **Založba za serbski lud** Foundation.

Under the **Grant of Severočeské doly Chomutov**, 1 student of the doctoral study programmes and 14 academic employees travelled for purposes of active presentations of their exploration outcome at the international events or for the purposes of creating the exploration or educational outcome in cooperation with foreign partners. The funds from this grant further supported release of 1 publication with an international reach.

1 student of the partner Universität Bayreuth studied the joint follow-up master's degree study programme of German philology in the Czech-German inter-cultural context/Inter-cultural German studies completed with a double diploma in 2014. With the financial support of the Erasmus programme, project for international mobility of students and academic personnel of the University under the Institutional Plan or Faculty of Philosophy, 6 students of the University studied in the above-mentioned joint study programme at Universität Bayreuth.

International contracts and government scholarship holders - mobility - development

Year	Trips		Arrivals	
	Students	Academic personnel	Students	Academic personnel
2010	2	4	8	-
2011	3	2	6	-
2012	2	4	5	-
2013	2	1	3	-
2014	3	1	4	-

## 12.c PARTICIPATION IN INTERNATIONAL RESEARCH AND DEVELOPMENT PROGRAMMES INCLUDING MOBILITIES (Table 12.2; 12.3)

The Seventh Framework Programme project is managed at the Faculty of Education (Table 12.2):

<b>Project name:</b>	Pri-Sci-Net“; „Networking Primary Science Educators as a means to provide training and professional development in Inquiry Based Teaching“; FP7-SCIENCE-IN-SOCIETY-2010-1 ref. 266647
<b>Head researcher:</b>	Malta Council for Science and Technology
<b>Contact person for the University and the Czech Republic</b>	PhDr. Iva Wedlichová, Ph.D.
<b>Partners</b>	Malta, Czech Republic, Portugal, Belgium, Finland, Germany, Cyprus, Austria, Greece, Slovakia, Great Britain, Turkey, France, Italy
<b>Date:</b>	3 trips 17-20 February 2014, Austria; 3 travels 15 -19 July 2014, Malta
<b>Activities:</b>	Research team meeting
<b>Project duration:</b>	2011–2014
<b>Subsidy at the University</b>	EUR 117,000 for the entire project duration

	7th Framework Programme		Total
	Total	of which Marie-Curie Actions	
Number of projects	1	-	1
Number of students seconded	-	-	-
Number of students accepted	-	-	-
Number of academic personnel seconded	6	-	6
Number of academic personnel accepted	-	-	-
Number of other employees seconded	-	-	-
Grants (in thousands of EUR)	-	-	-

Mobility of students and academic personnel by country (Table 12.3)

Country	Number of students seconded	Number of students accepted	Number of academic personnel seconded	Number of academic personnel accepted
Belgium	8			1
Belarus		2		
Brazil	1			
Bulgaria	2	1	1	1
Denmark	1			
Egypt		1		
Estonia	7	1	2	
Finland	7	8	2	
France	14		1	
Croatia	2	2	3	
Iceland	2			
Italy	20	4	6	
Israel	4			
Lithuania	6	1	2	
Latvia	2			1
Hungary	6		3	2
Malta	1			
Moldova		1		
Mongolia			1	
Germany	99	8	14	5
Netherlands	7			1
Norway	6			
Poland	8	15	16	21

Country	Number of students seconded	Number of students accepted	Number of academic personnel seconded	Number of academic personnel accepted
Portugal	10	5	3	
Austria	10		2	1
Romania	1	4	2	1
Russia	1	6	4	
Greece	7	3		
Slovakia	26	19	67	19
Slovenia	4	1	1	2
United States of America	1			
Serbia		3		1
Spain	48	23	7	
Sweden			1	
Tunisia			2	
Turkey	22	96	4	19
Great Britain	34		7	
Vietnam	9			
<b>Total</b>	<b>376</b>	<b>204</b>	<b>151</b>	<b>75</b>

Note: Includes mobilities of students of less than 28 days and mobilities of academic personnel of less than 5 days.

Participation in international research and development programmes:

Programme	Project name	Responsible researcher at the University	Implementation period (from-to)
Norway funds (CZ02)	Development of strategies of adaptation to climate changes in conditions of cities, using the adaptation approaches based on eco-system	doc. Ing. Lenka Slavíková, Ph.D.	1/2015–4/2016
Norway funds (CZ09)	Physical activity as a part of treatment of psychiatric patients	PhDr. Iva Wedlichová, Ph.D.	7/2014–4/2017
Norway funds (CZ06)	Revitalisation of the Church of the Assumption of Virgin Mary in Konojedy	PhDr. Kamil Podroužek, Ph.D.	1/2015–4/2016
Horizon 2020	CHIBOW Children Born of War - Past, Present and Future	doc. Mgr. Martin Veselý, Ph.D.	3/2015-3/2019

## 12.e FULFILMENT OF MAJOR INTERNATIONALISATION PLANS IN 2014

In 2014, the number of the partner universities which the University cooperates with under general cooperation agreements, i.e. in the form of the “direct cooperation”, apparently increased (from 33 to 36). However, due to the situation in East Ukraine, no activities were performed which would fulfil the contracts, basically with all Ukrainian (5) and Russian (4) universities. The Taras Shevchenko National University of Kyiv announced suspension of all of its activities, whereas only its branch in Starobelsk remained in operation.

In 2014, the University offered basically the same number of accredited study programmes in a foreign language as in the previous year. This was the master's degree study programme of the Faculty of Arts and Design in English, Photography and Time-based Media disciplines, and the follow-up master's degree study programme at the Faculty of Science, Computer Methods in Science and Technology discipline, doctoral programmes of the Faculty of Science Computer Methods in Science and Technology and Applied Nanotechnology and the doctoral programme of the Faculty of Philosophy in German in Tschechische Geschichte discipline.

A special offer, i.e. without including the subjects in the accredited study programmes and in foreign languages and linguistic education, was given to the incoming students in form of the subjects/courses taught in a foreign language in all sections of the University. This offer of courses in a foreign (English) language is being updated on an annual basis and published in advance on the University website.

In 2014, the University was granted the license for 2014-2020 entitling it to participate in the EU programmes focused on education, i.e. the Erasmus Charter for Higher Education, which enabled the University to conduct mobilities of the students and personnel under the Erasmus+ programme. In

addition, the University participated in key event 2 of the Erasmus+ programme, focused on strategic partnerships. Through the individual faculties, the University also participated in the Comenius, Tempus and CEEPUS projects and, in the form of mobilities of the students and academic personnel, took part in fulfilment of the contracts for international, direct university or foreign development cooperation.

In order to support the creative and research facilities for young researchers, the financial subsidy under the Grant of Severočeské doly Chomutov was provided again in 2014. Out of 22 applications submitted, 17 applicants were supported in participation and presentation at international conferences, residencies for purposes of finishing the dissertation theses and issuing the monograph with a foreign partner in the total amount of CZK 250,000.

## 13. QUALITY ASSURANCE AND EVALUATION OF ACTIVITIES PERFORMED

### 13.a INTERNAL QUALITY ASSESSMENT

In 2014, the internal quality assessment system included:

- assessment of quality of activities performed in connection with discussions and approval of the 2013 Annual Performance Report of the University (the report was discussed by the University management, Rector's collegium, collegiate, Management Board and Senate of the University),
- assessment of performance of the University Updated Long-Term Plan for 2014 (performance was gradually evaluated at the University management meetings, meetings of vice-rectors with vice-deans and the Academia meetings);
- assessment of performance of the updated long-term prospects of the faculties;
- assessment of quality of activities performed in connection with discussions and approval of the 2015 University Updated Long-Term Plan (the intentions of this update were discussed by the University management, Academia, Rector's collegium, collegiate, and Senate of the University),
- generation of self-evaluation reports on implementation of the selected bachelor's degree, master's degree and follow-up master's degree specified by the Accreditation Committee of the Czech Republic (reports of the Faculty of Philosophy, Faculty of Social and Economic Studies, Faculty of Production Technologies and Management, Faculty of Environment, Faculty of Education, Faculty of Science, and the University report),
- periodical evaluation of the academic personnel and departments of the University faculties (this evaluation focused on educational and research, development, artistic and other creative activity of the individual employees or departments and was performed in line with the internal regulations of the faculties),
- Students' evaluation of quality of education performed after the end of a semester (such assessment was conducted electronically in the STAG system of the University; a problematic issue of using these results was the low participation of the students),
- Students' evaluation of quality of education performed before the end of a semester (such assessment was conducted randomly using paper questionnaires as a pilot project of the Rector's Office).

Procedure against plagiarism was supported by the Rector's Directive on publication of final theses which stipulated the procedure for authenticating authorship of the students' qualification theses in the Theses system for plagiarism detection with the following rules:

- The result of the inspection in the Theses system is accessible to the author, thesis supervisor, thesis opponents, department head, vice-dean for study and vice-rector for study in the STAG system of the University.
- Prior to releasing his assessment, the thesis supervisor shall make review these results, assess any similarity with other documents and conclude his assessment by setting the "assessed - not plagiarised"/"assessed - plagiarised" parameter.
- If the inspection result is concluded by the thesis supervisor as "assessed - plagiarised", the dean shall initiate the disciplinary procedure with the student. The defence of such dissertation is not allowed.
- The department manager is responsible for inspecting the work with the results of the Theses system and for eventual submission of a written incentive to initiate a disciplinary procedure.
- Inspection of the work with the results of the Theses system shall be finalised prior to the eventual deadline for defence of the theses.

The above-described system of the internal assessment of the activities performed and the mechanism of the procedure against plagiarism of the students' qualification theses were applicable to the entire University, i.e. including the departments outside the principal place of the University.

In the course of 2014, the University also participated in the pilot verification of the methodology for evaluation of quality of preparation of university teachers IPn Quality of the Ministry of Education, Youth and Sports. The University also participated in the IPn Kredo project of the Ministry of Education, Youth and Sports, aimed at support of processing of the strategic plans of development of universities.



### 13.b EXTERNAL QUALITY ASSESSMENT

A critical role in the external quality assessment in 2014 was played by evaluation of the bachelor's, master's and follow-up master's degree study programmes conducted by the Accreditation Committee of the Czech Republic in six faculties of the University (Faculty of Philosophy, Faculty of Social and Economic Studies, Faculty of Production Technologies and Management, Faculty of Environment, Faculty of Education, Faculty of Science) and the Rector's Office as a control evaluation of the University evaluation in 2008 and 2010. In connection with this evaluation, the work group of the Accreditation Committee of the Czech Republic conducted a site inspection in September 2014, subsequently discussing the evaluation reports of the faculties and of the University at the Accreditation Committee meeting. Any and all evaluations were positive and resulted in all existing accreditations being extended. A valuable result of the external assessment of the University also comprised new accreditation of the study programmes. In summary, these were the following accreditation successes:

### 13.c NEW STUDY PROGRAMMES (DISCIPLINES)

Study programme code	Study programme name	Discipline code	Discipline name	Accreditations
<b>Faculty of Social and Economic Studies</b>				
B6208	Economics and management	6208R007	Economics and management	from 9 October 2014 to 31 December 2020
B6202	Economic policy and administration	6202R104	Regional development and public administration	from 9 October 2014 to 31 December 2018
N6208	Economics and management	6208T007	Economics and management	from 9 October 2014 to 31 December 2020
N6202	Economic policy and administration	6202T104	Regional development and public administration	from 9 October 2014 to 31 December 2018
<b>Faculty of Production Technologies and Management</b>				
B3911	Material sciences	3911R038	Materials	from 9 October 2014 to 31 December 2020
N3911	Material sciences	3911T039	Material sciences and material analyses	from 23 December 2014 to 31 December 2020
<b>Faculty of Health Studies</b>				
B5349	Midwifery	5341R007	Midwife	from 7 May 2014 to 31 December 2018
<b>Faculty of Philosophy</b>				
B7310	Philology	7310R242	Inter-cultural German studies	from 9 October 2014 to 31 December 2022*)
B7105	Historical sciences	7105R036	Cultural history	from 9 October 2014 to 31 December 2020
N7310	Philology	7504T093	Teaching of German language and literature for secondary schools (single-discipline)	from 9 October 2014 to 31 December 2020
N7105	Historical sciences	7105T048	History (single-discipline)	from 9 October 2014 to 31 December 2022*)
N7105	Historical sciences	7105T036	Cultural history	from 9 October 2014 to 31 December 2020
<b>Faculty of Education</b>				
B7310	Philology	7310R033	Czech language and literature (two-discipline)	from 9 October 2014 to 31 December 2020
B7310	Philology	7310R033	Czech language and literature (single-discipline)	from 9 October 2014 to 31 December 2020
B7310	Philology	7310R350	Czech language for media and the public sphere	from 9 October 2014 to 31 December 2020
B7507	Specialisation in education	7507R102	Visual arts for helping professions	from 3 March 2014 to 31 March 2018
B7507	Specialisation in education	7502R011	Social education	from 9 October 2014 to 31 December 2020*)
B7507	Specialisation in education	7310R009	English language and literature (two-discipline)	from 9 October 2014 to 31 December 2020



Study programme code	Study programme name	Discipline code	Discipline name	Accreditations
B7507	Specialisation in education	7507R103	Visual arts (two-discipline)	from 9 October 2014 to 31 December 2020
B7401	Physical education and sport	7401R013	Physical education (two-discipline)	from 9 October 2014 to 31 December 2020*)
N7401	Physical education and sport	7504T129	Teaching of physical education for secondary schools	from 9 October 2014 to 31 December 2020*)
N7401	Physical education and sport	7401T025	Sport and health	from 9 October 2014 to 31 December 2020
N7401	Physical education and sport	7503T145	Physical education for senior high schools	from 9 October 2014 to 31 December 2020
N7504	Teaching for secondary schools	7504T163	Teaching of visual arts for elementary, secondary and art schools	from 9 October 2014 to 31 December 2020
N7503	Teaching for elementary schools	7503T008	Teaching of English language and literature for elementary schools (single-discipline)	from 9 October 2014 to 31 December 2020
<b>Faculty of Science</b>				
B1702	Applied physics	1802R039	Applied computer modelling	from 9 October 2014 to 31 December 2022
B1702	Applied physics	1802R039	Applied computer modelling	from 9 October 2014 to 31 December 2022
B1701	Physics	1701R003	Physics	from 9 October 2014 to 31 December 2022
B1701	Physics	1802R014	Computer Modelling in Physics and Technology	from 3 March 2014 to 31 December 2014
N1701	Physics	1802T017	Computer Modelling in Science and Technology	from 3 March 2014 to 1 December 2015

\*) expanded with a combined form of study.

In 2014, the University acquired accreditation from the Ministry of Education, Youth and Sports for 18 educational programmes implemented by the Lifelong Education Centre (Faculty of Education). Departments with special accreditations were operating at the University - European documentation centre with an accredited centre statute Europe Direct (University Scientific Library), Lifelong Education Centre accredited to implement the educational programmes in line with the Act on academic personnel (Faculty of Education), ECDL accredited test centre (Faculty of Science), and others.

### 13.d FINANCIAL CONTROL

The internal control system is stipulated in the University Statute as an integral part of management and contains two pillars: management verification and internal audit. The main principles of and responsibilities for the financial control at the University are stipulated in the Rector's Directive - Financial Control System at the University. Specific control procedures for the individual types of operations are stipulated in the bursar's directive on circulation and processing of accounting documents.

The management verifications are conducted by the supervisors within their competences, as a part of the tasks and operations performed.

The internal auditor works according to the annual plan approved by the Rector. Performs independent verification of the internal control system and formulates recommendations based on the observations. In 2014, the internal auditing focused mainly on the projects under OP Research and Development for Innovations and the projects under OP Education for Competitiveness.

## 14. NATIONAL AND INTERNATIONAL EXCELLENCE

### 14.a MEMBERSHIP IN INTERNATIONAL ASSOCIATIONS, ORGANISATIONS AND UNIONS

- ☐ Agentura na podporu vedy a výskuma Slovenská republika
- ☐ American Mathematical Society (AMS)
- ☐ American Psychological Association (APA)
- ☐ Associazione Italiana di Storia Urbana (Italská asociace urbání historie)
- ☐ Austrian Studies Association
- ☐ Behavioral and Brain Sciences Associates
- ☐ British Arachnological Society
- ☐ Business Leaders Forum
- ☐ CASAJC – Česká a slovenská asociace učitelů jazykových center na vysokých školách
- ☐ CECAM Centre européen de calcul atomique et moléculaire
- ☐ Celostátní výbor Společnosti pro hospodářské a sociální dějiny ČR, a part of the International Economic History Association (IEHA)
- ☐ Centrum behaviorálních experimentů (CEBEX)
- ☐ CIVITAS, INTL Civic Education Exchange Program
- ☐ Collegium Politicum (association of 17 European universities)
- ☐ Česko-litevská společnost
- ☐ Česko-slovensko-německá komise historiků
- ☐ Česká a Slovenská krystalografická společnost
- ☐ Deutsche Gesellschaft für Religionsphilosophie
- ☐ EFCE (European Federation of Chemical Engineering)
- ☐ EERA (European Educational Research Association)
- ☐ ESEH (European Society for Environmental History)
- ☐ European Physical Society (EPS)
- ☐ European Microscopy Society (CSMS)
- ☐ EMLG (European Molecular Liquids Group)
- ☐ ENOTHE - European Network of Occupational Therapy in Higher Education
- ☐ EURACHEM
- ☐ European Regional Science association
- ☐ European Society for Ecological Economics
- ☐ ENVIL – Netzwerk Kompetenzorientierung (KVK)
- ☐ European Society of Phraseology
- ☐ Federace evropských fotografů
- ☐ Forschungszentrum Gotha der Universität Erfurt
- ☐ Forschungszentrum Deutsch in Mittel-, Ost- und Südeuropa der Universität Regensburg (DiMOS)
- ☐ Freundeskreis der Forschungsbibliothek Rotha
- ☐ Gesellschaft für deutsche Sprache
- ☐ Gesellschaft für interkulturelle Germanistik (GiG)
- ☐ ICARUS (International Centre for Archival Research)
- ☐ IGIP - International Society for Engineering Pedagogy
- ☐ INSEA – International Society for Education through Art
- ☐ Institute for Behavioural and Economic Studies (INBES)
- ☐ International Association of Aesthetics (IAA)
- ☐ International Association of Art Critics
- ☐ International Association of Geomorphologists
- ☐ International Astronomical Union
- ☐ International Cartographic Association (ICA)
- ☐ International Economic History Association IEHA
- ☐ International Federation of Societies for Microscopy (CSMS)
- ☐ International Society for Pharmacoeconomics and Outcomes Research (ISPOR)
- ☐ International Plato Society (IPS)
- ☐ International Pragmatic Association
- ☐ International Sculpture Center, Hamilton, NJ-08619
- ☐ International Society for Clinical Biostatistics
- ☐ Internationale Vereinigung für Germanisten (IVG)
- ☐ Interski
- ☐ International Economic History Association IHEA
- ☐ ITI, Euroregion Labe/Elbe

- IUVSTA (International Union for Vacuum Science, Technique and Applications), Plasma Science and Technique Division
- IUPAP (International Union of Pure and Applied Physics)
- IUCr – International Union of Crystallography
- Historische Kommission für die böhmischen Länder
- Kulturverein Aachen-Prag/Spolek Čáchy-Praha
- Matice lužickosrbská – Maćica Serbska / Mašica Serbska
- МАВ Міжнародная асацыяцыя беларусістаў
- Mezinárodní asociace učitelů ruského jazyka a literatury (MAPRYAL)
- International Geographical Union (IGU)
- Mezinárodní komise pro církevněslovanské slovníky při Mezinárodním komitétu slavistů (KBO)
- International PEN-club
- Görres Gesellschaft, Germany
- ICARUS (digitalisation and scientific use of digitalised sources)
- Nanonet
- Nordic Society for Phenomenology
- Orff Society
- Polskie Towarzystwo Ludoznacze
- Property and Freedom Society
- Rehabilitation International
- ResearchGATE
- Sculpture Network, Pöcking D-82343
- Slovenská atlantická komisia
- Slovenská historická spoločnosť (SAV)
- Slovenská jazykovedná spoločnosť pri Slovenskej akadémii vied
- Slovenská národopisná spoločnosť SAV
- Society for the Scientific Study of Religion
- Society in Transition
- Gesellschaft für angewandte Linguistik
- Gesellschaft für deutsche Sprache
- Stylistická komise při Mezinárodním komitétu slavistů
- International Association for Semiotic Studies
- The Nordic Society for Phenomenology
- Vzdělávací nadace Jana Husa (správní rada česko – slovenská)
- Wartburg-Gesellschaft (international association of persons interested in study of castles)
- World Federation of Societies of Biological Psychiatry

#### **14.b MEMBERSHIP IN PROFESSIONAL ASSOCIATIONS, ORGANISATIONS AND UNIONS**

- Akademie designu ČR
- Alumni Klub DAAD v České republice
- Asociace děkanů pedagogických fakult České a Slovenské republiky
- Asociace interiérových architektů
- Asociace knihoven vysokých škol
- Asociace logopedů ve školství
- Asociace muzeí a galerií České republiky
- Asociace náhradní výchovy
- Asociace předškolní výchovy
- Asociace psychologů sportu
- Asociace sklářského a keramického průmyslu ČR
- Asociace speciálních pedagogů České republiky
- Asociace technických fakult ČR
- Asociace učitelů češtiny jako cizího jazyka
- Asociace učitelů dějepisu
- Asociace výchovných poradců
- Asociace vzdělávatelů v sociální práci (ASVSP)
- Association of Teachers of English in the Czech Republic
- AUG Design
- Centrum literárních a interkulturních studií při MU Brno
- Centrum mediévistických studií AV ČR a UK Praha
- CNZ – profesní společnost Co po nás zbude

- Czech Nanoteam
- Česká arachnologická společnost
- Česká archivní společnost
- Česká arteterapeutická Asociace – Asociace klinických logopedů
- Česká a slovenská asociace amerikanistů
- Česká asociace ergoterapeutů
- Česká asociace geomorfologů
- Česká asociace pedagogického výzkumu
- Česká asociace rusistů
- Česká asociace sester
- Česká asociace slavistů
- Česká a slovenská asociace učitelů jazykových center na vysokých školách
- Česká astronomická společnost
- Česká botanická společnost
- Československá biologická společnost
- Česká fyzikální společnost
- Česká fyziologická společnost
- Česká demografická společnost
- Česká geografická společnost
- Česká geografická společnost
- Česká informační společnost
- Český komitét pro chemii při IUPAC (International Union for Pure and Applied Chemistry)
- Česká komora architektů
- Česká konfederace porodních asistentek
- Česká lékařská společnost
- Česká neuropsychofarmakologická společnost
- Česká Orffova společnost
- Česká origami společnost
- Česká pedagogická společnost
- Česká psychiatrická společnost ČLS JEP
- Česká sklářská společnost
- Česká společnost histo- a cytochemická
- Česká společnost ekonomická
- Česká společnost chemická
- Česká společnost chemická; sekce průmyslové chemie
- Česká společnost chemického inženýrství
- Česká společnost chemická; sekce organické chemie
- Česká společnost chemická, sekce chemické termodynamiky
- Česká společnost pro jakost, sekce ŽP
- Česká společnost pro nové materiály a technologie
- Česká společnost pro politické vědy
- Česká společnost pro výzkum a využití jílů
- Česká společnost pro systémovou integraci
- Česká společnost strojírenské technologie
- Česká statistická společnost
- Česká technologická platforma
- Česká vakuová společnost
- Česká zoologická společnost
- Československá biologická společnost
- Českomoravská psychologická společnost
- Československá mikroskopická společnost (CSMS)
- Český komitét pro chemii při IUPAC (International Union for Pure and Applied Chemistry)
- Český národní komitét historiků
- ECPR Standing Group on Extremism & Democracy
- Expertní tým Oborová didaktika informatiky a ICT při Národním ústavu pro vzdělávání – Výzkumný ústav pedagogický
- Federace dětských domovů ČR
- Fotoforum Praha
- Grantová komise agendy VEGA
- Grantová komise Karlovy Univerzity
- Grantová komise Ministerstva kultury
- Historický klub – Sdružení historiků České republiky
- Institut pedagogické psychologie
- ISCB – Mezinárodní společnost pro klinickou biostatistiku v ČR

- ☐ Jazykovědné sdružení ČR
- ☐ Jednota matematiků a fyziků
- ☐ Jednota školských informatiků
- ☐ Kartografická společnost ČR
- ☐ Komise MŠMT pro oblast koncepce jazykového vzdělávání
- ☐ Komise MŠMT pro revizi RVP v oblasti Umění a kultura
- ☐ Komise NVÚ pro oblast Umění a kultura
- ☐ Matice Moravská
- ☐ Muzejní a vlastivědná společnost v Brně
- ☐ Obec spisovatelů
- ☐ Odborná skupina pro chemické vzdělávání při České společnosti chemické
- ☐ Okresní hospodářská komora v Mostě
- ☐ Plénum RUV – modul literární
- ☐ Pražský lingvistický kroužek
- ☐ Rady vysokých škol
- ☐ Regionální informační středisko Design centra ČR pro Severočeský region
- ☐ Sdružení automobilového průmyslu
- ☐ Sdružení bienále Brno
- ☐ Sdružení českých grafiků „František Kupka“
- ☐ Sdružení historiků ČR
- ☐ Sdružení knihoven ČR
- ☐ Sdružení mezinárodního sympozia rytého skla
- ☐ Sdružení pro rozvoj lidové kultury na Ústecku
- ☐ Sdružení výtvarných umělců keramiků Praha
- ☐ Sekce sociální patologie v rámci České Masarykovy sociologické společnosti
- ☐ Silikátový svaz ČR
- ☐ Sklářská sekce České vědecké společnosti
- ☐ Sklářský klastr (Liberecký kraj)
- ☐ Slavistická společnost Franka Wollmana
- ☐ Společnost CNZ
- ☐ Společnost pro biologickou psychiatrii
- ☐ Společnost pro hospodářské a sociální dějiny
- ☐ Společnost pro hudební výchovu České republiky
- ☐ Společnost sociálního lékařství a řízení péče o zdraví České lékařské společnosti J. E. Purkyně
- ☐ Společnost vědeckotechnických parků ČR
- ☐ Spolek pro obnovu venkova
- ☐ Stálá pracovní skupina Akreditační komise ČR pro pedagogiku, psychologii a kinantropologii
- ☐ Svaz germanistů České republiky
- ☐ Svaz knihovníků a informačních pracovníků ČR
- ☐ Svaz průmyslu a dopravy České republiky
- ☐ Syndikát výtvarných umělců
- ☐ Typo Design Club
- ☐ Uměleckohistorická společnost v českých zemích
- ☐ UNIFY – Unie fyzioterapeutů v ČR, ČAS – Česká asociace sester
- ☐ Unie výtvarných umělců Praha

#### **14.c NATIONAL AND INTERNATIONAL AWARDS IN 2014**

In 2013, the University was awarded the Diploma Supplement Label valid until 2017.

#### **14.d EVALUATION BY A TEAM OF INTERNATIONAL EXPERTS**

The University was not evaluated by a team of international experts in 2014.

## 15. DEVELOPMENT

### 15.a ENGAGEMENT IN CENTRALISED DEVELOPMENT PROJECTS OF THE MINISTRY OF EDUCATION, YOUTH AND SPORTS (Table 15.1)

	Number of projects accepted	Granted funds in thousands of CZK	
		Capital	Normal
Programme for support of mutual cooperation of universities in the area of capacity sharing and creating of university networks in the Czech Republic	1	0	500
<b>Total</b>	<b>1</b>	<b>0</b>	<b>500</b>

### 15.b INSTITUTIONAL DEVELOPMENT PLAN (Table 15.2)

Institutional development plan	Granted funds in thousands of CZK		Achievement of determined objectives/indicators	
	Capital	Normal	Initial status	Target status
1/ Stimulation of human resources development and international cooperation development				
Habilitation procedure commencement	0	3,300	-	6
Professor appointment procedure commencement			-	1
Submission of international projects of the University creative teams with participation of young personnel and doctorands of the University			-	30
Supported publication outcome with participation of young academic personnel of the University abroad			-	27
Establishment of inter-disciplinary inter-faculty teams			-	5
2/ Stimulation of the University quality development with the aim to improve competitiveness				
Number of study programmes in compliance with the national reference framework	0	3,000	22	42
Study programmes with innovated courses/subjects according to Q-Ram methodology			0	20
Study programmes according to the ECTS label criteria			0	18
3/ Human resources management quality				
Faculties with pilot verification of the academic personnel evaluation system	242	1,347	0	3
University-wide questionnaire survey for education evaluation			none	completed
Specialised seminars held in regional clusters			0	5
4/ International mobility of students and academic personnel of the University				
Total number of persons participating in the international mobility under the University contracts, in the form of free movers, University representation and creation of joint study programmes	0	1,996	39	63
Number of e-learning courses in a foreign language			0	4
5/ University publication and good reputation spreading				
Innovated website of the University	0	561	-	Non-existing
Marketing strategy developed			none	exists
6/ Campus development				
Project documentation at various degrees of completion	13,958	710	none	exists
Number of new tender documentations completed			0	5
Number of investment projects implemented			0	6

Institutional development plan	Granted funds in thousands of CZK		Achievement of determined objectives/indicators	
	Capital	Normal	Initial status	Target status
<b>7/ University IT Centre development in terms of security and operational quality</b>				
System of virtualisation system disk arrays	2,369	341	1	2
Workstation maintenance and administration software			0	1
University-wide system of unmanned printing			0	1
Network infrastructure expansion			Current condition of objects used Ongoing construction and reconstruction within the campus premises	Current condition of objects used, ongoing construction and reconstruction within the campus premises
<b>Total</b>	<b>16,569</b>	<b>11,255</b>		

### 15.c PARTICIPATION IN EU OPERATIONAL PROGRAMMES

Project (numerical ID)	Operational programme	Implementation period (from-to)	Total financial amount provided	Financial amount provided in 2014	Supported area
CZ.1.05/4.1.00/04.0141 Modern educational and research and development infrastructure of the Faculty of Philosophy of the J. E. Purkyně University	Research and Development for Innovations	5/2011 - 10/2014	CZK 261,932,252.00	CZK 87,350,871.73	Infrastructure for University teaching connected with research and with direct effect on increase of human resources for Research and Development activities
CZ.1.05/3.2.00/12.0229 VIZ: Research information sources for research and development	Research and Development for Innovations	11/2012 - 12/2014	CZK 35,423,399.00	CZK 2,114,346.00	Disclosure of scientific databases
CZ.1.05/3.2.00/12.0225 Information sources for medicine and related disciplines	Research and Development for Innovations	11/2012 - 12/2014	CZK 1,067,275.00	CZK 0.00	Disclosure of scientific databases
CZ.1.05/3.2.00/12.0228 Nature: scientific information sources of natural sciences	Research and Development for Innovations	11/2012 - 12/2014	CZK 5,201,212.00	CZK 0.00	Disclosure of scientific databases
CZ.1.05/3.2.00/12.0231 Chemical Electronic Information Sources for R&D	Research and Development for Innovations	11/2012 - 12/2014	CZK 856,800.00	CZK 0.00	Disclosure of scientific databases
CZ.1.05/3.2.00/12.0227 MENDEL University Library	Research and Development for Innovations	11/2012 - 12/2014	CZK 1,364,000.00	CZK 0.00	Disclosure of scientific databases
CZ.1.05/3.2.00/12.0232 STMFull: full-text databases of research and development	Research and Development for Innovations	11/2012 - 12/2014	CZK 3,516,374.00	CZK 0.00	Disclosure of scientific databases

Project (numerical ID)	Operational programme	Implementation period (from-to)	Total financial amount provided	Financial amount provided in 2014	Supported area
CZ.1.05/3.2.00/12.0230 SCI-INFO: scientific information sources for the Czech Republic	Research and Development for Innovations	11/2012 - 12/2014	CZK 2,597,179.00	CZK 0.00	Disclosure of scientific databases
CZ.1.05/4.1.00/11.0260 Education improvement and research expansion at the Faculty of Production Technologies and Management (EDIMARE)	Research and Development for Innovations	1/2014 - 4/2015	CZK 20,551,323.00	CZK 15,138,110.88	Infrastructure for University teaching connected with research and with direct effect on increase of human resources for Research and Development activities
CZ.1.05/3.1.00/14.0328 New composite materials on the basis of graphene and oxides	Research and Development for Innovations	1/2014 - 10/2015	CZK 5,525,920.00	CZK 0.00	Commercialisation of the results of research organisations and protection of their intellectual property
CZ.1.07/1.1.00/54.0049 Centre of Practical Economic Education in the Ústí nad Labem Region	VK	10/2014 - 6/2015	CZK 6,248,934.05	CZK 4,215,937.00	Education quality improvement
CZ.1.07/1.2.00/47.0008 Path to inclusion: from segregation to positive diversity in education	VK	5/2014 - 6/2015	CZK 16,075,541.55	CZK 7,328,941.12	Equal opportunities for children and pupils, including children and pupils with special educational needs
CZ.1.07/1.3.00/48.0133 Support of professional growth of teachers in initial studies	VK	5/2014 - 6/2015	CZK 9,731,470.92	CZK 4,467,328.46	Further education of the staff in schools and school facilities
CZ.1.07/1.3.00/51.0017 Touch-screen devices in education	VK	10/2014 - 6/2016	CZK 22,883,388.22	CZK 28,194,772.00	Further education of the staff in schools and school facilities
CZ.1.07/2.2.00/28.0285 CORONA CULTURAE Innovation of arts disciplines in various sections of the University	VK	2/2012 - 1/2015	CZK 11,825,245.60	CZK 2,276,753.44	Tertiary education
CZ.1.07/2.2.00/28.0290 InRegion - Innovation of education of the study programmes of the regional development with respect to the needs of the labour market	VK	1/2012 - 12/2014	CZK 11,791,543.88	CZK 2,995,490.34	Tertiary education
CZ.1.07/2.2.00/28.0205 ENVIMOD - modernisation of education of technical and natural scientific disciplines at the University with focus on the environmental protection	VK	1/2012 - 11/2014	CZK 60,394,581.30	CZK 12,941,108.51	Tertiary education



Project (numerical ID)	Operational programme	Implementation period (from-to)	Total financial amount provided	Financial amount provided in 2014	Supported area
CZ.1.07/2.2.00/28.0299 Multimedia education of students of the master's degree study programmes	VK	3/2012 - 1/2015	CZK 1,539,812.20	CZK 0.00	Tertiary education
CZ.1.07/2.2.00/28.0169 Reconstruction of the study of kinanthropology disciplines with respect to competitiveness of the graduates	VK	1/2012 - 12/2014	CZK 638,343.00	CZK 0.00	Tertiary education
CZ.1.07/2.2.00/29.0023 University centre for support of students with specific educational needs	VK	6/2012 - 4/2015	CZK 31,957,803.51	CZK 7,247,301.52	Tertiary education
CZ.1.07/2.2.00/28.0296 MEVAPOX Inter-disciplinary relations and support of practical application of science and technical disciplines of the University study programmes	VK	4/2013 - 06/2015	CZK 20,731,935.90	CZK 7,022,474.97	Tertiary education
CZ.1.07/2.3.00/35.0046 Popularisation of the research and development in nuclear security and landscape revitalisation in the partnership network of research and development organisations and Česká Hlava societies	VK	5/2012 - 4/2014	CZK 2,958,934.00	CZK 0.00	Human resources in research and development
CZ.1.07.2.3.00/30.0028 Materials and human resources for environment	VK	4/2012 - 3/2015	CZK 4,999,994.40	CZK 1,376,457.10	Human resources in research and development
CZ.1.07.2.3.00/35.0044 Inclusive university, inclusive science	VK	7/2012 - 6/2014	CZK 24,683,707.00	CZK 1,778,215.81	Human resources in research and development
CZ.1.07/2.3.00/30.0062 Opportunities for young researchers at the J. E. Purkyně University	VK	9/2012 - 5/2015	CZK 4,999,205.14	CZK 1,628,894.52	Human resources in research and development
CZ.1.07/2.4.00/17.0133 Comunitas pro praxis	VK	08/2011 - 07/2014	CZK 3,181,783.90	CZK 825,388.59	Partnership and networks
CZ.1.07/2.4.00/16.0013 Full cost - University	VK	08/2011 - 06/2014	CZK 7,749,623.69	CZK 158,548.57	Partnership and networks
CZ.1.07/2.4.00/17.0125 Life-netdesigning	VK	05/2011 - 02/2014	CZK 327,100.00	CZK 0.00	Partnership and networks
CZ.1.07/2.4.00/31.0074 NEFLT Network of foreign language teachers	VK	03/2012 - 2/2014	CZK 32,800,895.83	CZK 6,662,217.75	Partnership and networks

Project (numerical ID)	Operational programme	Implementation period (from-to)	Total financial amount provided	Financial amount provided in 2014	Supported area
CZ.1.07/2.4.00/17.0132 NetRegio - the platform for accelerating the network of relationships and relations between the regional development research and application sphere	VK	06/2011 - 05/2014	CZK 13,745,022.21	CZK 0.00	Partnership and networks
CZ.1.07/2.4.00/31.0010 Support of creation of the national cartography network of the new generation - NeoCartoLink	VK	05/2012 - 04/2014	CZK 0.00	CZK 0.00	Partnership and networks
CZ.1.07/2.4.00/17.0131 PARNET – partner network	VK	07/2011 - 06/2014	CZK 6,988,743.32	CZK 820,217.49	Partnership and networks
CZ.1.07/2.4.00/17.0094 SPINET - Czech abbreviation for cooperation, innovations and networking of science and technology parks and universities	VK	9/2011 - 8/2014	CZK 1,314,436.11	CZK 0.00	Partnership and networks
<b>Total</b>	-	-	<b>CZK 473,156,966.98</b>	<b>CZK 221,346,435.13</b>	-

#### 15.c.a PARTICIPATION IN OP OBJECTIVE 3

Project (numerical ID)	Operational programme	Implementation period (from-to)	Total financial amount provided	Financial amount provided in 2014	Supported area
Effects of weather and changes of climate on the environment and ground constructions (100113281)	Objective 3	9/2012 - 6/2014	EUR 109,477.00	CZK 1,556,460.27	Cross-border cooperation
ArchaeoMontan – medieval mining in Saxony and Bohemia (100099134)	Objective 3	3/2012 - 3/2015	EUR 98,600.00	CZK 1,555,784.00	Cross-border cooperation
Saxon-Czech relationships over time - supporting educational publication (100066821)	Objective 3	4/2011 - 3/2014	EUR 76,580.00	CZK 522,716.41	Cross-border cooperation
Common development and implementation of the Blended learning concept in the combined study of the Inter-cultural German studies with the help of the on-line form of study (100114412)	Objective 3	12/2012 - 11/2014	EUR 50,892.00	CZK 716,872.57	Cross-border cooperation

Project (numerical ID)	Operational programme	Implementation period (from-to)	Total financial amount provided	Financial amount provided in 2014	Supported area
InWest - transfer of IT knowledge for the economic development of the Saxon-Czech borderland (100012813)	Objective 3	2/2011 - 1/2014	EUR 144,916.00	CZK 1,070,730.94	Cross-border cooperation
INPOK - innovation potential as a factor of improvement of competitiveness of the Czech-Saxon borderland (100088915)	Objective 3	10/2011 - 12/2014	EUR 265,942.00	CZK 1,701,309.92	Cross-border cooperation
PROTRANSFER - Professionalisation of the technology and science transfer (100105408)	Objective 3	10/2012 - 9/2014	EUR 71,083.00	CZK 917,311.83	Cross-border cooperation
Borderland 2.0 - Project development and project coaching in the Czech-Saxon borderland (100105456)	Objective 3	9/2012 - 12/2014	EUR 99,987.00	CZK 824,246.61	Cross-border cooperation
InWest 2.0 - Efficient use of the technologies of the future (100157005)	Objective 3	01/2014 12/2014	EUR 39,988.00	0	Cross-border cooperation
Valuable nature of the eastern Krušné hory region (100093854)	Objective 3	1/2012- 12/2014	EUR 142,128.00	CZK 1,615,333.93	Cross-border cooperation

#### 15.d PARTICIPATION IN THE EDUCATION POLICY FUND

	Granted funds in thousands of CZK	
	Capital	Normal
Innovation of educational practices and support of the network of cooperating schools and educational facilities	0	3,538,000
Education by art as a communication act in a broader social context	0	1,505,000
Creative activity and social space	0	1,495,008
Register of arts works	0	630,000
University of the Third Age	0	860,000
<b>Total</b>	<b>0</b>	<b>8,028,008</b>

## 16. CONCLUSION

The University successfully achieved its long-term plan, or its updated version for 2014, in all major aspects, including the EU operational programmes and the development projects of the Ministry of Education, Youth and Sports.

### Development

There were 10 projects of the OP Research and Development for Innovations managed (of which 3 of the University and 7 of the partners). Under the ongoing project of OP Research and Development for Innovations Operational Programme for reconstruction of the Faculty of Philosophy buildings (modern educational and research and development infrastructure of the Faculty of Philosophy of the J. E. Purkyně University), the construction was being completed and other key activities of the project were performed. The Improvement of Quality of Education and Research Expansion project was launched at the Faculty of Production Technologies and Management. They also worked on 15 projects co-financed from OP Education for Competitiveness, 7 new projects were submitted, 2 of which were not approved, 10 projects were completed successfully.

In the case of the 2014 Institutional Development Plan, the University achieved the determined indicators at 95.45%. 4.55% of the performance indicators remained unachieved (see Table 15 b). The University was a fellow researcher of one centralised development project that was successfully completed (see Table 15 a).

The 2nd floor of the "D" building (VIKS) in the University campus was reconstructed for the needs of the Faculty of Social and Economic Studies for the total investment of CZK 9.2 million and the 1st stage of the wiring modernisation in the building of the Faculty of Education was completed for CZK 1.7 million. Construction of the students' catering facility in the premises of the Faculty of Education was commenced with the assumed costs of CZK 9.5 million. There were other additional constructions performed which were mainly funded from OP Research and Development for Innovation: interconnection of the campus premises and the Česká mládež building, an abutment wall and street lighting behind F1 and F2 objects, road and street lightning on Mendělejevova street.

### Science

In the area of science, research and creative activity, the University focused on profiling the areas and subjects of the research and creative activity. In cooperation with the institutes of the Ústí nad Labem Region and the City of Ústí nad Labem, the University personnel took an active part in preparation for utilisation of the European Union funds - mainly drafting the Regional Innovation Strategy of the Ústí nad Labem Region and the Regional Action Plan.

The individual faculties and departments of the University were successful in winning the international projects from the Norway funds, from the Visegrad programme and one new Horizon 2020 project.

### External Relations

Internationalisation and mobilities played an important role at the University also in 2014. Under the Erasmus/Erasmus+ projects focused on mobility of students and employees, the University had 254 bilateral contracts concluded with 158 foreign universities in 22 countries in 2014. The residencies or internships abroad were participated in by 376 University students and 122 University employees attended the educational residencies and training abroad. 189 foreign students studied or worked in the University Erasmus programme and 58 employees from foreign partner universities participated in the educational residencies and training at the University. Through the Faculty of Social and Economic Studies and the Faculty of Education, the University participated in 3 Comenius projects, the Faculty of Environment participated in 1 Tempus project and the Faculty of Social and Economic Studies, Faculty of Production Technologies and Management and Faculty of Education participated in 12 projects under the CEEPUS programme. Under the direct cooperation, 6 students from the foreign partner universities studied at the University and 4 foreign students studied at the University under the foreign development assistance (the "governmental scholarship holders"). One student of the Faculty of Education received the scholarship of the Založba za serbski lud Foundation.

### Education

In terms of studies, the year 2014 brought the valuable result of the external evaluation of the University performance by the Accreditation Committee of the Czech Republic which approved extension of all bachelor's degree and master's degree study programmes, the accreditation of which was to expire and which the faculties strived to have extended. The Accreditation Committee of the Czech Republic also positively assessed all self-evaluating reports of the University and faculties on performance of the conclusions arising from the evaluation conducted in 2008 and 2010. They also continued developing the quality at the expense of quantity, the number of applicants, students and graduates continued to

decrease in connection with the demographic development and the proportion of students in the combined forms of studies continued to increase. The University successfully responded to the Minister's measure for funding the studies of students completing their educational qualification and to the opportunity given by the universities budget to apply for the funds for funding the higher costs of studies of the students with specific needs.

ISBN 978-80-7414-926-9



Issued By: Jan Evangelista Purkyně University in Ústí nad Labem  
(the “University”) 2015